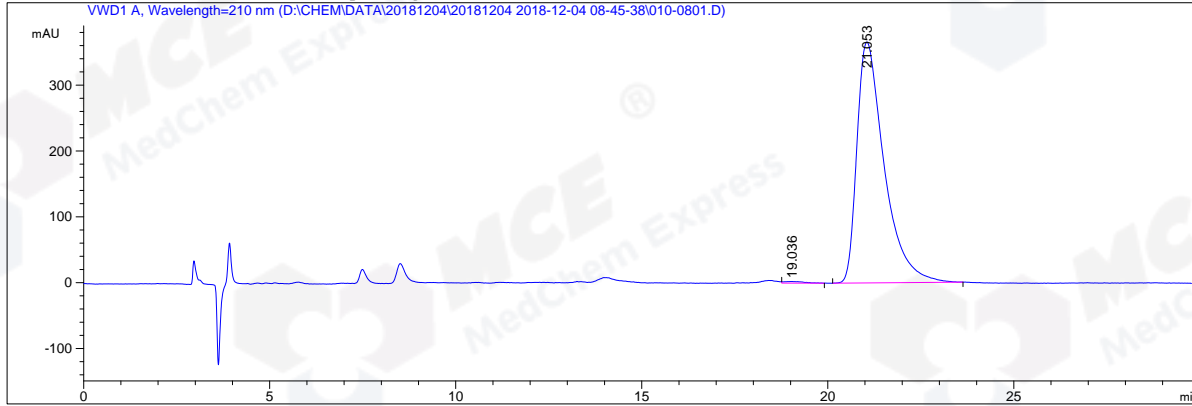


=====

Acq. Operator	: ZXM	Seq. Line	: 8
Acq. Instrument	: HPLC-04	Location	: Vial 10
Injection Date	: 12/4/2018 11:51:48 AM	Inj	: 1
		Inj Volume	: 5.0 µl
Acq. Method	: D:\CHEM\DATA\20181204\20181204 2018-12-04 08-45-38\HM-096A_6,210NM,C2-.M		
Last changed	: 12/4/2018 11:18:18 AM by ZXM (modified after loading)		
Analysis Method	: D:\CHEM\METHODS\HM-096A_6,210NM,C2-.M		
Last changed	: 12/4/2018 10:05:19 AM by ZXM (modified after loading)		
Catalog No	: HY-100335 Batch#36503 C-NP-30		

Additional Info : Peak(s) manually integrated



=====  
Area Percent Report  
=====

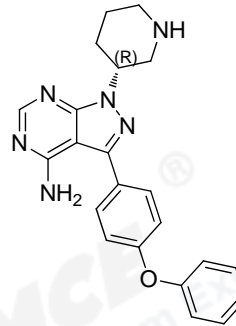
Sorted By : Signal  
Multiplier: : 1.0000  
Dilution: : 1.0000  
Use Multiplier & Dilution Factor with ISTDs

Signal 1: VWD1 A, Wavelength=210 nm

Peak #	RetTime [min]	Type	Width [min]	Area mAU*s	Height [mAU]	Area %
1	19.036	FM R	0.6128	88.86592	2.41682	0.4752
2	21.053	MM R	0.8475	1.86112e4	365.99432	99.5248

Totals : 1.87001e4 368.41115

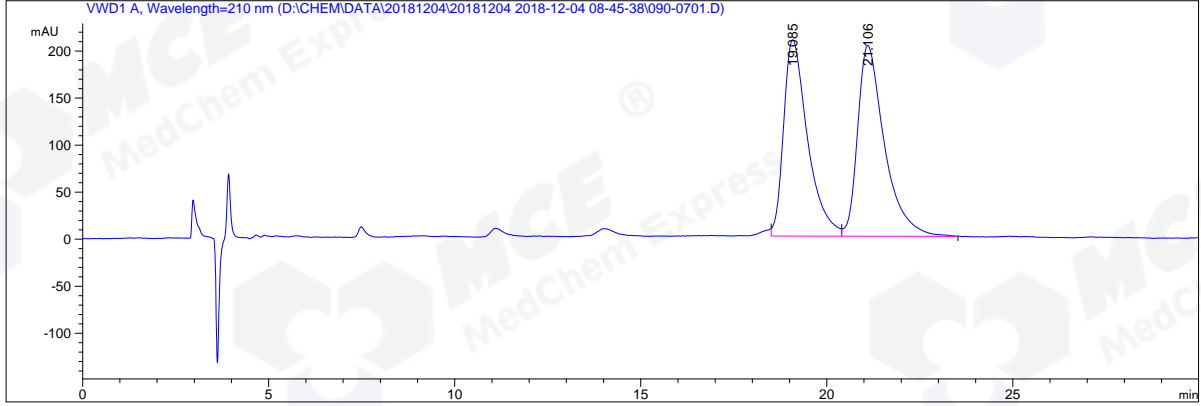
=====  
\*\*\* End of Report \*\*\*



```

=====
Acq. Operator   : ZXM                               Seq. Line :    7
Acq. Instrument : HPLC-04                           Location  : Vial 90
Injection Date  : 12/4/2018 11:20:09 AM             Inj       :    1
                                                    Inj Volume: 5.0 µl
Acq. Method     : D:\CHEM\DATA\20181204\20181204 2018-12-04 08-45-38\HM-096A_6,210NM,C2-.M
Last changed    : 12/4/2018 11:18:18 AM by ZXM
                  (modified after loading)
Analysis Method : D:\CHEM\METHODS\HM-096A_6,210NM,C2-.M
Last changed    : 12/4/2018 10:05:19 AM by ZXM
                  (modified after loading)
Catalog No      : HY-100335 Batch#36503
                  C-NP-30
=====
  
```

Additional Info : Peak(s) manually integrated  
 VWD1 A, Wavelength=210 nm (D:\CHEM\DATA\20181204\20181204 2018-12-04 08-45-38\090-0701.D)



Area Percent Report

```

Sorted By      :      Signal
Multiplier:    :      1.0000
Dilution:      :      1.0000
Use Multiplier & Dilution Factor with ISTDs
  
```

Signal 1: VWD1 A, Wavelength=210 nm

Peak #	RetTime [min]	Type	Width [min]	Area mAU*s	Height [mAU]	Area %
1	19.085	FM R	0.7483	9362.84961	208.52278	47.9412
2	21.106	FM R	0.8356	1.01670e4	202.79033	52.0588

Totals :                    1.95299e4    411.31311

\*\*\* End of Report \*\*\*

