

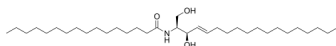
C16-Ceramide

Cat. No.: HY-100354
Batch No.: 231828
CAS No.: 24696-26-2
Molecular Formula: C₃₄H₆₇NO₃

ANALYTICAL DATA

Theoretical: C(75.00%-76.10%)、H(12.20%-12.80%)、N(2.40%-2.80%)
Result: C(75.79%)、H(12.41%)、N(2.50%)

Chemical Structure:



Caution: Product has not been fully validated for medical applications. For research use only.

Tel: 609-228-6898

Fax: 609-228-5909

E-mail: tech@MedChemExpress.com

Address: 1 Deer Park Dr, Suite Q, Monmouth Junction, NJ 08852, USA