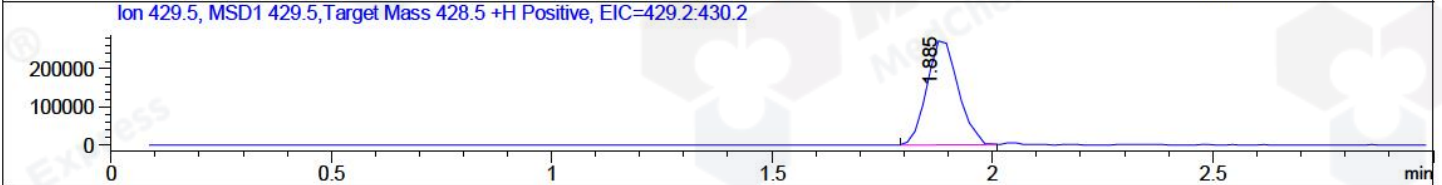
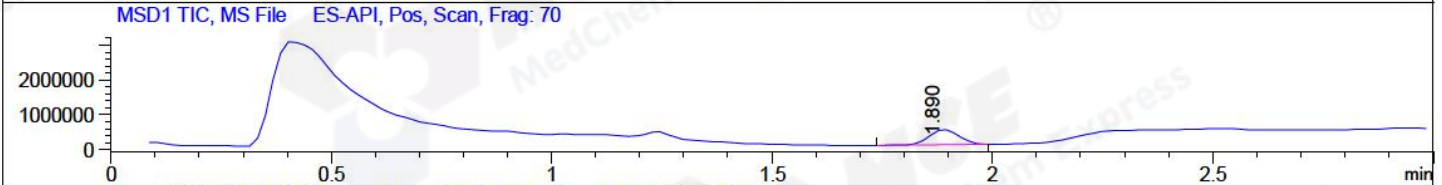
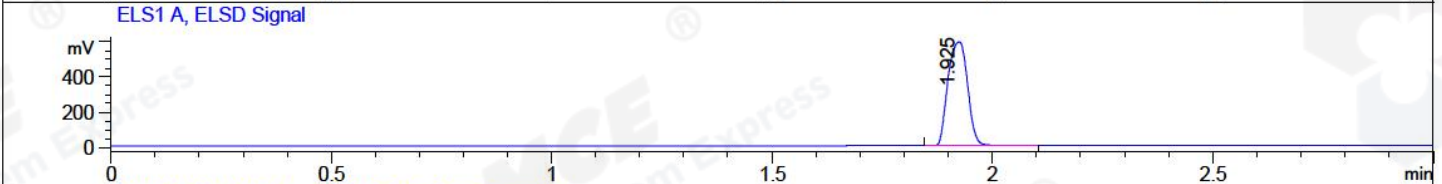
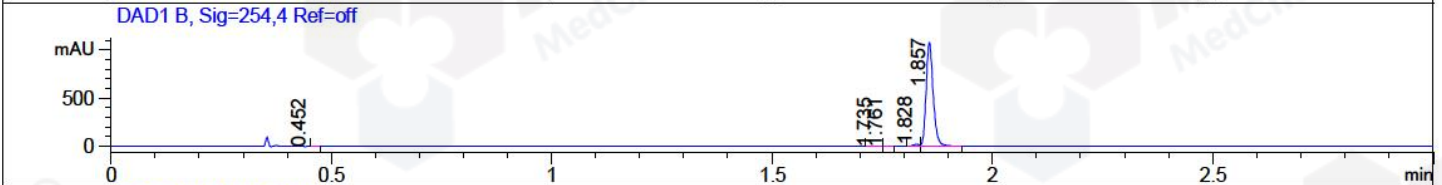
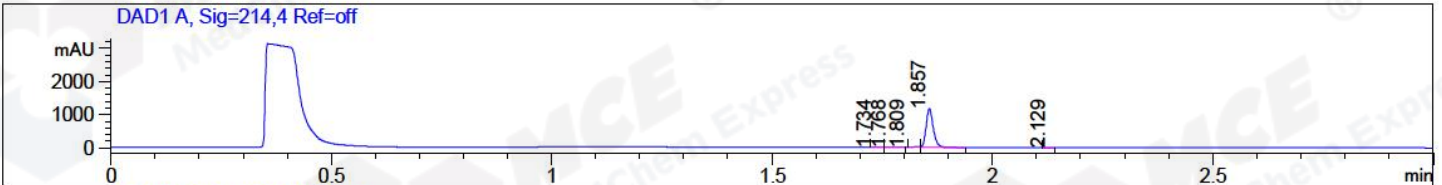


File ..ata\20171208\20171208-1\CPK2017-D07-01087.D Tgt Mass (CHM):  
 Injection Date : 8 Dec 17 1:18 pm +0800 Seq. Line : 5  
 Sample Name : CPK2017-D07-01087 Location : P1-E-02  
 Acq. Operator : ZLJ\_587 Inj : 1  
 Spec. Reported : MS Integration Inj Volume : 1 ul  
 Acq. Method : D:\LCMS03\Data\20171208\20171208-1\1-POS-3MIN.M  
 Analysis Method : D:\LCMS03\Data\20171208\20171208-1\1-POS-3MIN.M  
 Catalog No : HY-10038 Batch#01087  
 Method Info : Mobile Phase: A: water(0.01%TFA) B:ACN(0.01%TFA)  
 Gradient: 5% to 95%B within 1.3 min  
 Flow Rate :1.8ml/min  
 Column :SunFire C18, 4.6\*50mm,3.5um A-RP-186  
 Oven Temperature : 45C



Integration Results for DAD1 A, Sig=214,4 Ref=off

RetTim	Width	Area	Height	Area%	MS (+)
1.73	0.02	0.59	0.62	0.04	157
1.77	0.02	0.80	0.81	0.06	233
1.81	0.02	20.89	-0.16	1.55	429
1.86	0.02	1323.51	1174.47	98.31	429
2.13	0.01	0.44	0.51	0.03	233

Integration Results for DAD1 B, Sig=254,4 Ref=off

RetTim	Width	Area	Height	Area%	MS (+)
0.45	0.01	0.59	-0.60	0.05	157
1.74	0.01	0.36	0.40	0.03	157
1.76	0.01	0.17	0.19	0.01	233
1.83	0.02	17.08	18.47	1.40	429
1.86	0.02	1198.02	1075.37	98.50	429

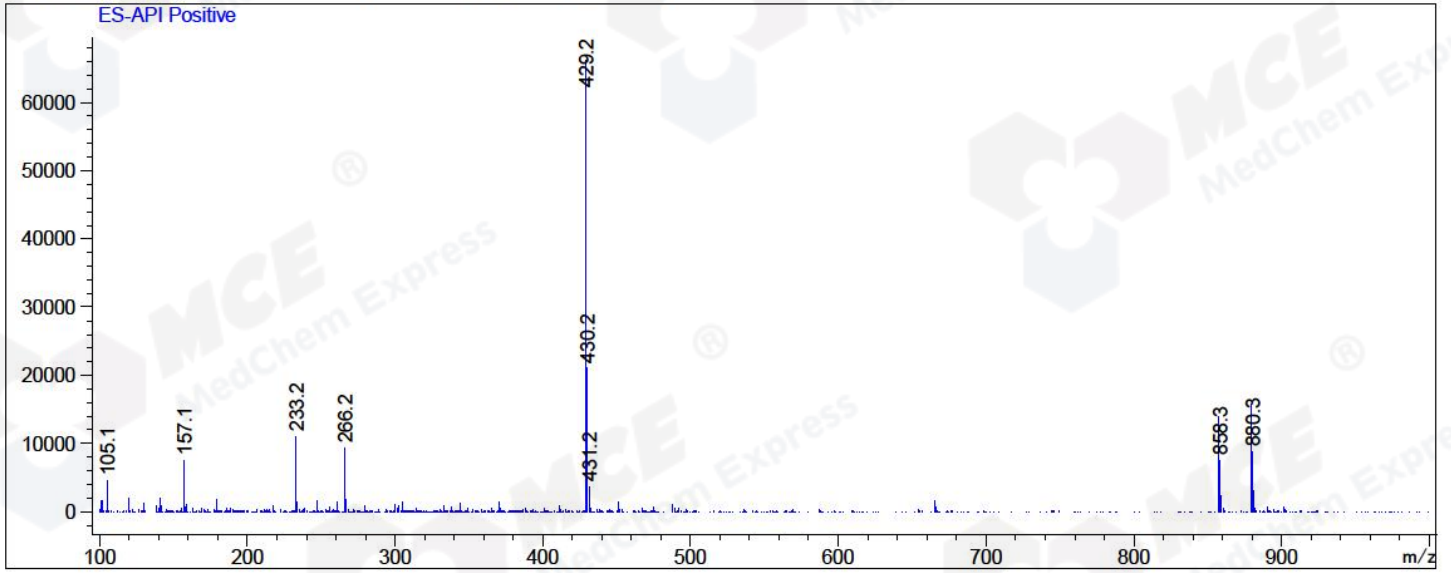
Integration Results for MSD1 TIC, MS File

RetTim	Width	Area	Height	Area%	MS (+)
--------	-------	------	--------	-------	--------

-----|-----|-----|-----|-----|-----|  
1.89      0.08      2041455.63      434024.38      100.00      429

Ret. Time: 1.89

<<<< POSITIVE SPECTRA >>>>



\*\*\* End of Report \*\*\*