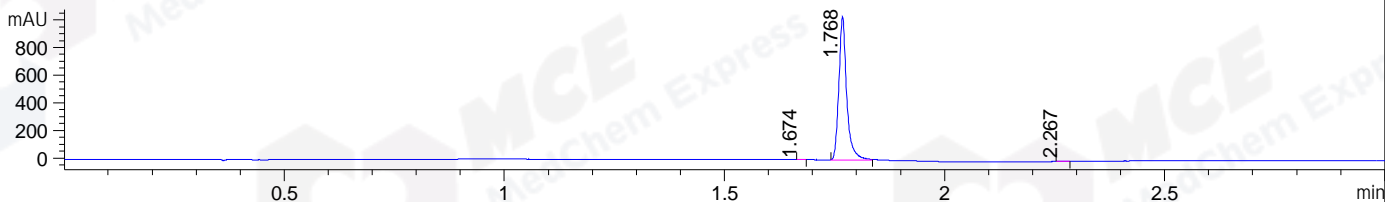
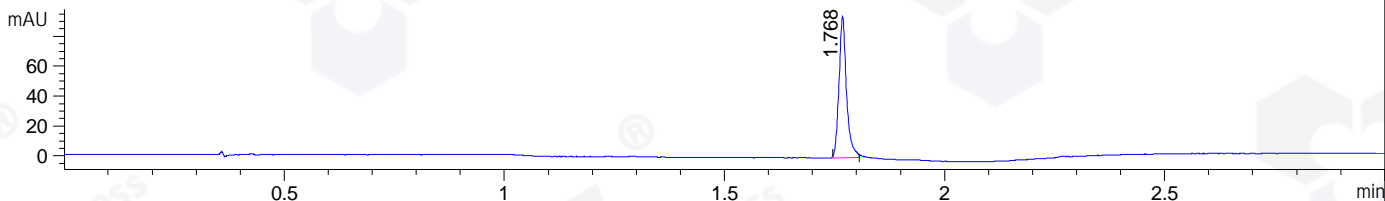


File ..1\DATA\2019\20190505\558\BIZ2019-430-CXL3.D Tgt Mass (CHM):
Injection Date : 5 May 19 10:49 am +0800 Seq. Line : 12
Sample Name : BIZ2019-430-CXL3 Location : P2-E-08
Acq. Operator : LQ_1052 Inj : 1
Spec. Reported : MS Integration Inj Volume : 1 ul
Acq. Method : D:\Chem32\1\data\2019\20190505\558\1-POS-3MIN-1.M
Analysis Method : D:\CHEM32\1\DATA\2019\20190505\558\1-POS-3MIN-1.M
Catalog No : HY-100399A Batch#40808
Method Info : Mobile Phase: A: water(0.01%TFA) B:ACN(0.01%TFA)
Gradient: 5% to 95%B within 1.3 min
Flow Rate :1.8ml/min
Column :SunFire C18, 4.6*50mm,3.5um A-RP-322
Oven Temperature : 45

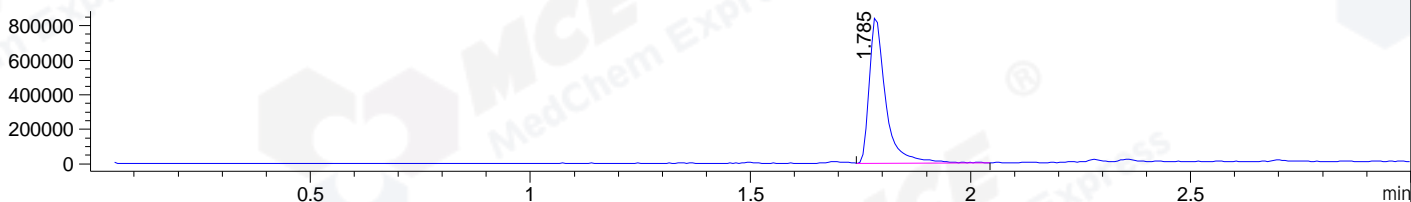
DAD1 B, Sig=214,4 Ref=off



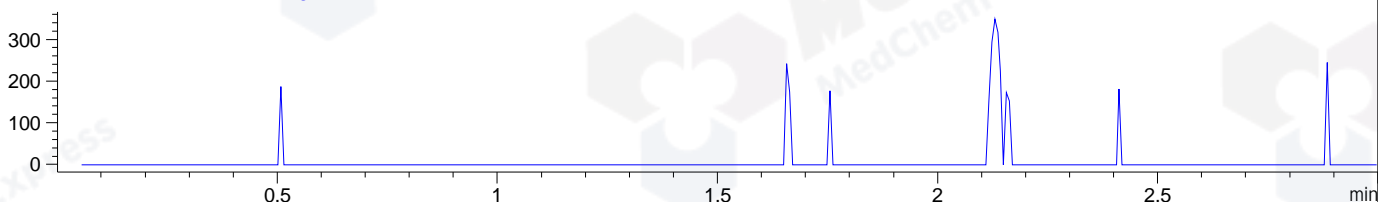
DAD1 C, Sig=254,4 Ref=off



MSD1 TIC, MS File ES-API, Pos, Scan, Frag: 70



Ion 458.3, MSD1 458.3, Target Mass 457.3 +H Positive, EIC=458:459



Integration Results for DAD1 B, Sig=214,4 Ref=off

RetTim	Width	Area	Height	Area%	MS (+)
1.67	0.01	1.52	2.01	0.12	408
1.77	0.02	1289.25	1037.80	99.77	422
2.27	0.02	1.46	1.41	0.11	597

Integration Results for DAD1 C, Sig=254,4 Ref=off

RetTim	Width	Area	Height	Area%	MS (+)
1.77	0.02	112.41	94.68	100.00	422

Integration Results for MSD1 TIC, MS File

RetTim	Width	Area	Height	Area%	MS (+)
1.78	0.04	2199804.50	849915.88	100.00	422

Ret. Time: 1.78

<<<< POSITIVE SPECTRA >>>>

ES-API Positive

