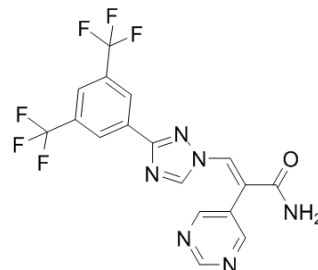


Data Sheet

Product Name:	KPT-8602
Cat. No.:	HY-100423
CAS No.:	1642300-52-4
Molecular Formula:	C ₁₇ H ₁₀ F ₆ N ₆ O
Molecular Weight:	428.29
Target:	CRM1
Pathway:	Membrane Transporter/Ion Channel
Solubility:	DMSO: 4.72 mg/mL



BIOLOGICAL ACTIVITY:

KPT-8602 is a second-generation exportin-1 inhibitor, shows similar in vitro potency compared with KPT-330.

In vitro: KPT-8602 induces caspase-dependent apoptosis in a panel of leukemic cell lines in vitro. Using CRISPR/Cas9 genome editing we demonstrate the specificity of KPT-8602 for cysteine 528 in the cargo-binding groove of XPO1 and validate the drug target interaction. [1]

In vivo: KPT-8602 shows potent anti-leukemia activity in a mouse ALL model as well as in patient-derived T- and B-ALL xenograft models without affecting normal hematopoiesis.[1]

References:

[1]. Vercruyse T et al. The second-generation exportin-1 inhibitor KPT-8602 demonstrates potent activity against acute lymphoblastic leukemia. Clin Cancer Res. 2016 Oct 25.

Caution: Product has not been fully validated for medical applications. For research use only.

Tel: 609-228-6898 Fax: 609-228-5909 E-mail: tech@MedChemExpress.com

Address: 1 Deer Park Dr, Suite Q, Monmouth Junction, NJ 08852, USA