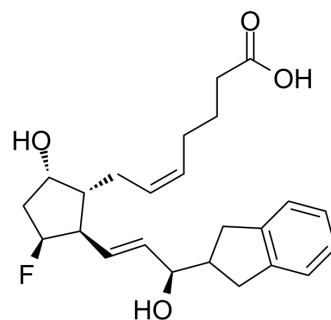


AL-8810

| | |
|--------------------|---|
| Cat. No.: | HY-100449 |
| CAS No.: | 246246-19-5 |
| Molecular Formula: | C ₂₄ H ₃₁ FO ₄ |
| Molecular Weight: | 402.5 |
| Target: | Prostaglandin Receptor |
| Pathway: | GPCR/G Protein |
| Storage: | Please store the product under the recommended conditions in the Certificate of Analysis. |



BIOLOGICAL ACTIVITY

Description

AL-8810 is an 11 β -fluoro analog of PGF_{2 α} and acts as a potent and selective antagonist of the PGF_{2 α} receptor (FP receptor)^[1].

REFERENCES

[1]. Griffin BW, et al. AL-8810: a novel prostaglandin F2 alpha analog with selective antagonist effects at the prostaglandin F2 alpha (FP) receptor. J Pharmacol Exp Ther. 1999 Sep;290(3):1278-84.

Caution: Product has not been fully validated for medical applications. For research use only.

Tel: 609-228-6898

Fax: 609-228-5909

E-mail: tech@MedChemExpress.com

Address: 1 Deer Park Dr, Suite Q, Monmouth Junction, NJ 08852, USA