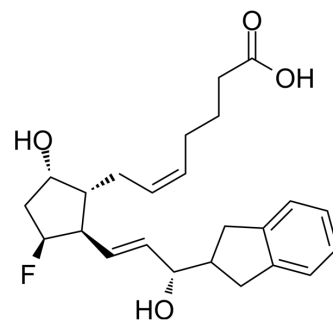


(S)-AL-8810

Cat. No.:	HY-100449A
CAS No.:	1224444-55-6
Molecular Formula:	C ₂₄ H ₃₁ FO ₄
Molecular Weight:	402.5
Target:	Prostaglandin Receptor
Pathway:	GPCR/G Protein
Storage:	Please store the product under the recommended conditions in the Certificate of Analysis.



BIOLOGICAL ACTIVITY

Description

(S)-AL 8810 is an 11 β -fluoro analog of PGF₂ α that acts as a potent and selective antagonist at the FP receptor. (S)-AL 8810 is the C-15 epimer of AL 8810, having the inverse, (S), or "natural" configuration at C-15 relative to AL 8810, which is 15-(R)^[1].

REFERENCES

[1]. Griffin BW, Klimko P, Crider JY, Sharif NA. AL-8810: a novel prostaglandin F₂ alpha analog with selective antagonist effects at the prostaglandin F₂ alpha (FP) receptor. J Pharmacol Exp Ther. 1999 Sep;290(3):1278-84.

Caution: Product has not been fully validated for medical applications. For research use only.

Tel: 609-228-6898

Fax: 609-228-5909

E-mail: tech@MedChemExpress.com

Address: 1 Deer Park Dr, Suite Q, Monmouth Junction, NJ 08852, USA