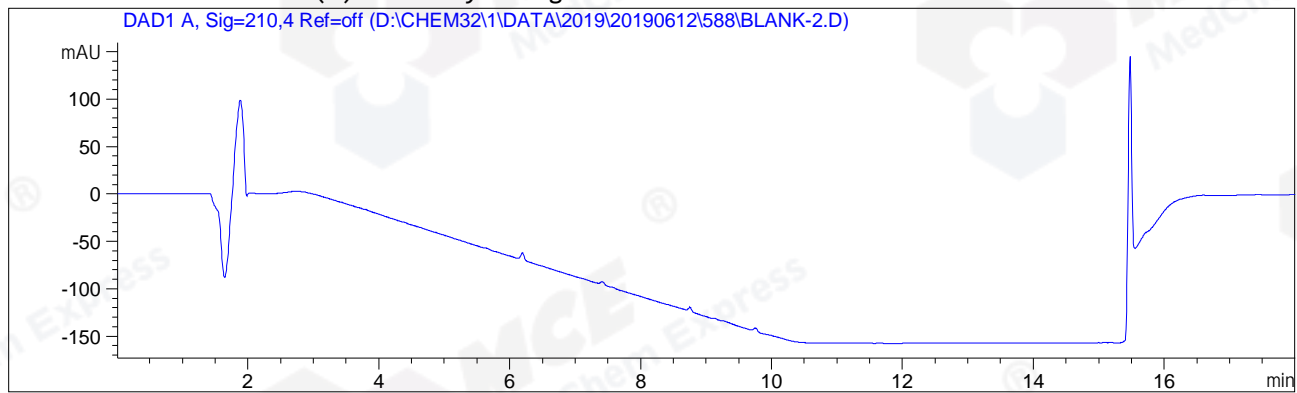


=====
Acq. Operator : ZJ_1432 Seq. Line : 22
Acq. Instrument : LCMS-02 Location : P1-F-07
Injection Date : 6/13/2019 6:55:55 Inj : 2
 Inj Volume: 5.000 µl
Acq. Method : D:\CHEM32\1\DATA\2019\20190612\588\30-90A,210.AD.C2.M
Last changed : 6/12/2019 17:21:15 by ZJ_1432
Analysis Method : D:\CHEM32\1\DATA\2019\20190612\588\30-90A,210.AD.C2.M (Sequence Method)
Last changed : 6/13/2019 11:34:15 by ZJ_1432
 (modified after loading)
Method Info : Mobile Phase: A: water(0.05%TFA) D:ACN
 Gradient: 30% to 90%D within 8 min
 Flow Rate :1.0ml/min
 Column :A-RP-345
 Oven Temperature : 30 C

Additional Info : Peak(s) manually integrated



=====
Area Percent Report
=====

Sorted By : Signal
Multiplier : 1.0000
Dilution : 1.0000
Do not use Multiplier & Dilution Factor with ISTDs

No peaks found

=====
*** End of Report ***

Sample Name: CPK2019-612-21452

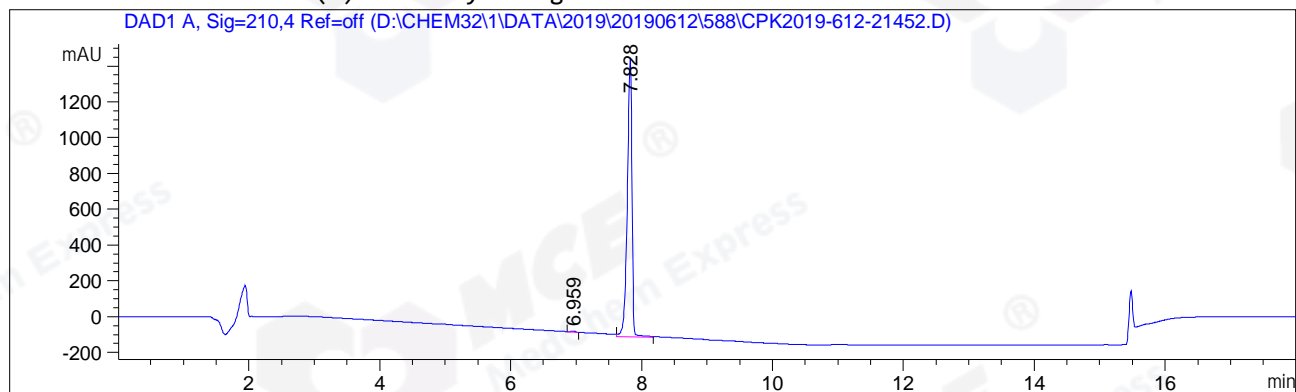
```

=====
Acq. Operator   : ZJ_1432                      Seq. Line :   23
Acq. Instrument : LCMS-02                      Location  : P2-B-03
Injection Date  : 6/13/2019 7:15:39           Inj       :    1
                                           Inj Volume: 5.000 µl
Acq. Method     : D:\CHEM32\1\DATA\2019\20190612\588\30-90A,210.AD.C2.M
Last changed    : 6/12/2019 17:21:15 by ZJ_1432
Analysis Method : D:\CHEM32\1\DATA\2019\20190612\588\30-90A,210.AD.C2.M (Sequence Method)
Last changed    : 6/13/2019 11:34:15 by ZJ_1432
                 (modified after loading)
Method Info     : Mobile Phase: A: water(0.05%TFA) D:ACN
                 Gradient: 30% to 90%D within 8 min
                 Flow Rate :1.0ml/min
                 Column   :A-RP-345
                 Oven Temperature : 30 C

Catalog No     : HY-100453 Batch#21452

```

Additional Info : Peak(s) manually integrated



```

=====
                          Area Percent Report
=====

```

```

Sorted By      :      Signal
Multiplier     :      1.0000
Dilution      :      1.0000
Do not use Multiplier & Dilution Factor with ISTDs

```

Signal 1: DAD1 A, Sig=210,4 Ref=off

Peak #	RetTime [min]	Type	Width [min]	Area [mAU*s]	Height [mAU]	Area %
1	6.959	MM	0.0664	25.07782	6.29628	0.3183
2	7.828	VB	0.0767	7854.43945	1561.81689	99.6817

```
Totals :                      7879.51727 1568.11318
```

```

=====
*** End of Report ***

```