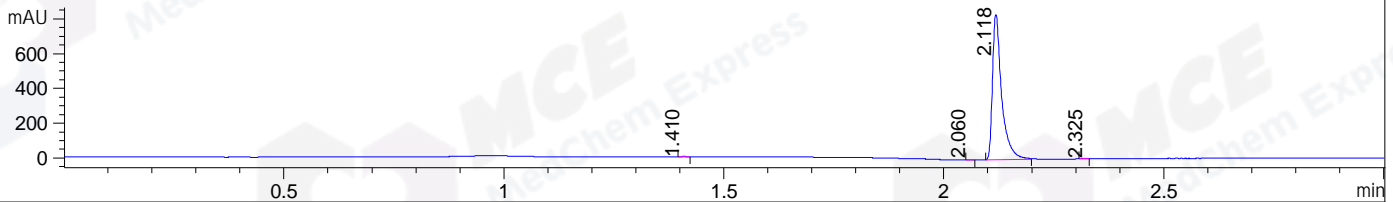
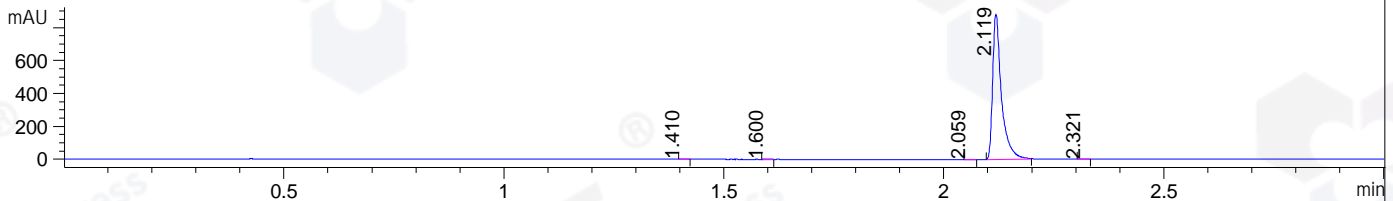


File ..1\DATA\2019\20190515\581\BIZ2019-515-WYQ6.D Tgt Mass (CHM):
 Injection Date : 15 May 19 4:44 pm +0800 Seq. Line : 13
 Sample Name : BIZ2019-515-WYQ6 Location : P2-E-03
 Acq. Operator : LQ_1052 Inj : 1
 Spec. Reported : MS Integration Inj Volume : 1 ul
 Acq. Method : D:\Chem32\1\data\2019\20190515\581\1-POS-3MIN.M
 Analysis Method : D:\CHEM32\1\DATA\2019\20190515\581\1-POS-3MIN.M
 Catalog No : HY-100544 Batch# 41073-20190515
 Method Info : Mobile Phase: A: water(0.01%TFA) B:ACN(0.01%TFA)
 Gradient: 5% to 95%B within 1.3 min
 Flow Rate :1.8ml/min
 Column :SunFire C18, 4.6*50mm,3.5um A-RP-322
 Oven Temperature : 45□

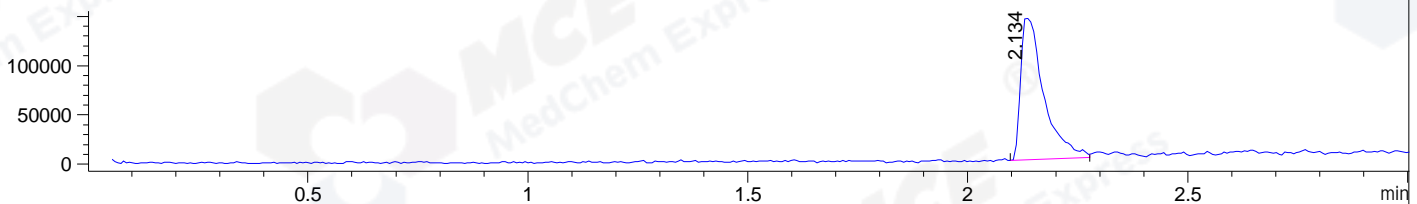
DAD1 B, Sig=214,4 Ref=off



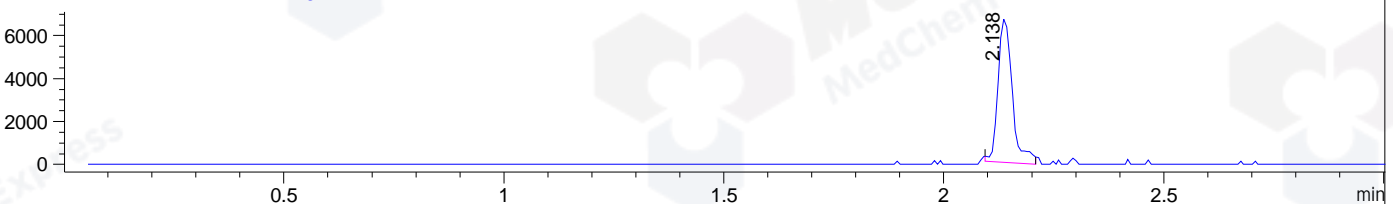
DAD1 C, Sig=254,4 Ref=off



MSD1 TIC, MS File ES-API, Pos, Scan, Frag: 70



Ion 465.2, MSD1 465.2, Target Mass 464.2 +H Positive, EIC=464.9:465.9



Integration Results for DAD1 B, Sig=214,4 Ref=off

RetTim	Width	Area	Height	Area%	MS (+)
1.41	0.02	1.20	1.31	0.10	ND
2.06	0.01	0.64	0.82	0.05	ND
2.12	0.02	1211.61	836.22	99.78	327
2.32	0.02	0.85	0.90	0.07	ND

Integration Results for DAD1 C, Sig=254,4 Ref=off

RetTim	Width	Area	Height	Area%	MS (+)
1.41	0.01	0.40	0.50	0.03	ND
1.60	0.02	0.53	0.50	0.04	ND
2.06	0.02	0.52	0.58	0.04	ND
2.12	0.02	1232.63	883.18	99.80	327
2.32	0.02	0.96	0.97	0.08	ND

Integration Results for MSD1 TIC, MS File

RetTim	Width	Area	Height	Area%	MS (+)
--------	-------	------	--------	-------	--------

2.13 0.05 528590.38 144165.53 100.00 327

Ret. Time: 2.13

<<<< POSITIVE SPECTRA >>>>

ES-API Positive

