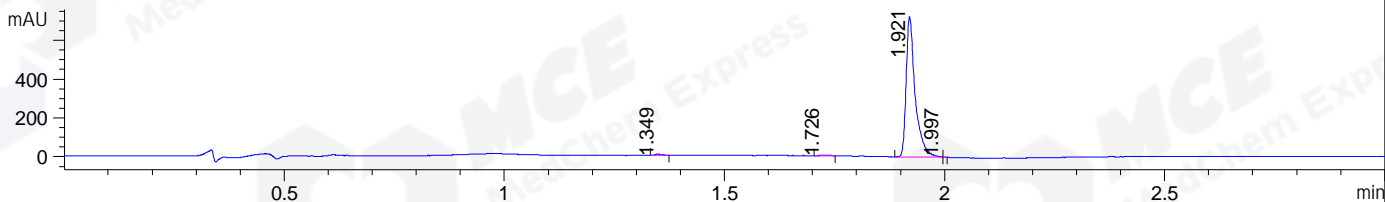
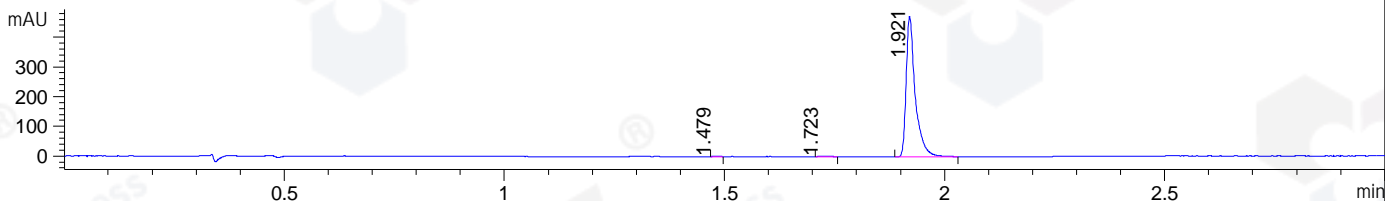


File ..\DATA\2019\20191221\794\BIZ2019-D20-CXL1.D Tgt Mass (CHM):
Injection Date : 21 Dec 19 2:30 pm +0800 Seq. Line : 42
Sample Name : BIZ2019-D20-CXL1 Location : P1-C-04
Acq. Operator : ZJ_1432 Inj : 1
Spec. Reported : MS Integration Inj Volume : 8 ul
Acq. Method : D:\Chem32\1\data\2019\20191221\794\1-POS-3MIN.M
Analysis Method : D:\CHEM32\1\DATA\2019\20191221\794\1-POS-3MIN.M
Catalog No : HY-100596 Batch#58122
Method Info : Mobile Phase: A: water(0.01%TFA) B:ACN(0.01%TFA)
Gradient: 5% to 95%B within 1.3 min
Flow Rate :1.8ml/min
Column :SunFire C18, 4.6*50mm,3.5um A-RP-433
Oven Temperature : 45□

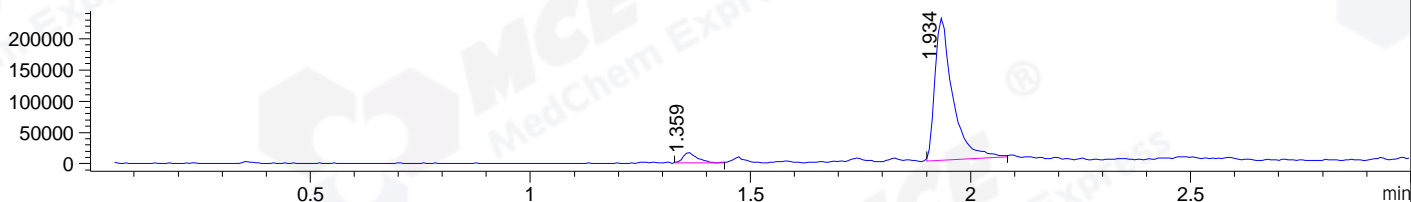
DAD1 B, Sig=214,4 Ref=off



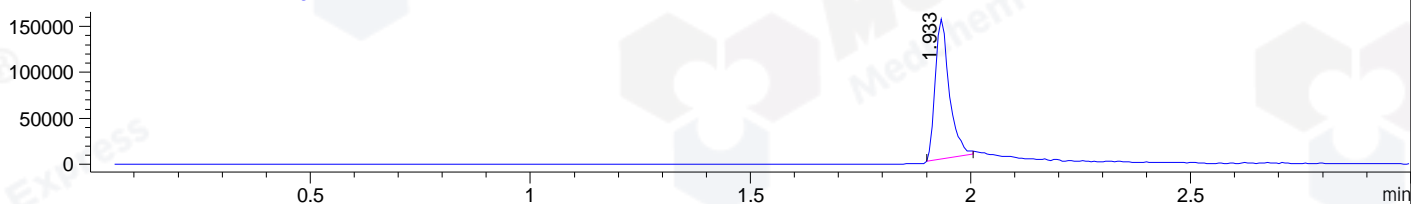
DAD1 C, Sig=254,4 Ref=off



MSD1 TIC, MS File ES-API, Pos, Scan, Frag: 70



Ion 348, MSD1 348, Target Mass 347 +H Positive, EIC=347.7:348.7



Integration Results for DAD1 B, Sig=214,4 Ref=off

| RetTim | Width | Area | Height | Area% | MS (+) |
|--------|-------|---------|--------|-------|--------|
| 1.35 | 0.02 | 6.57 | 6.00 | 0.63 | 339 |
| 1.73 | 0.03 | 4.30 | 2.77 | 0.41 | 297 |
| 1.92 | 0.02 | 1031.75 | 724.82 | 98.89 | 348 |
| 2.00 | 0.01 | 0.73 | 2.02 | 0.07 | 348 |

Integration Results for DAD1 C, Sig=254,4 Ref=off

| RetTim | Width | Area | Height | Area% | MS (+) |
|--------|-------|--------|--------|-------|--------|
| 1.48 | 0.02 | 0.80 | 0.85 | 0.12 | 274 |
| 1.72 | 0.02 | 3.05 | 2.21 | 0.45 | 297 |
| 1.92 | 0.02 | 677.44 | 473.00 | 99.44 | 348 |

Integration Results for MSD1 TIC, MS File

| RetTim | Width | Area | Height | Area% | MS (+) |
|--------|-------|-----------|-----------|-------|--------|
| 1.36 | 0.03 | 35425.74 | 16377.33 | 5.26 | 339 |
| 1.93 | 0.04 | 638170.13 | 227482.03 | 94.74 | 348 |

Ret. Time: 1.36

<<<< POSITIVE SPECTRA >>>>

ES-API Positive



Ret. Time: 1.93

ES-API Positive

