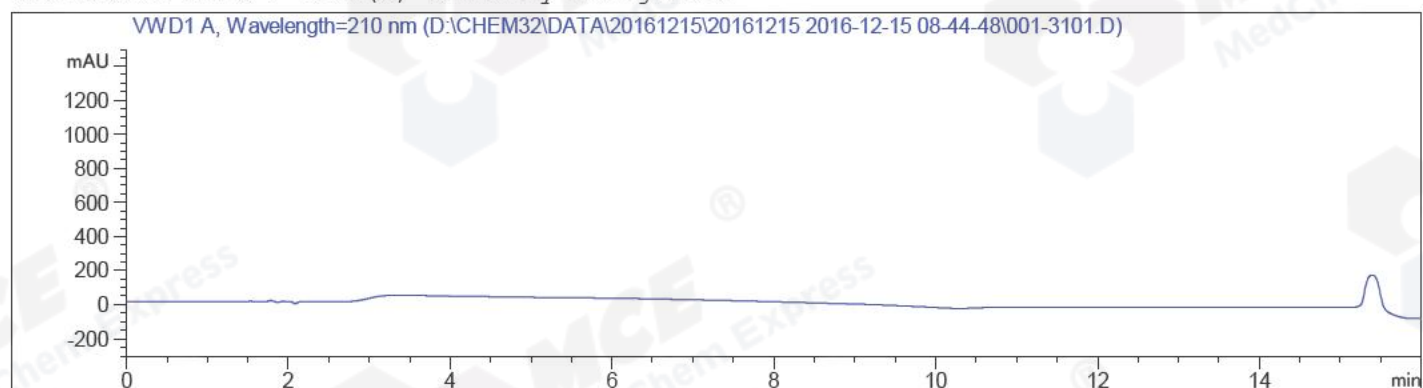


Sample Name: BIZ2016-D09-WJ10_0

=====
Acq. Operator : LCY(HPLC-09) Seq. Line : 31
Acq. Instrument : Instrument 1 Location : Vial 1
Injection Date : 12/15/2016 4:23:26 PM Inj : 1
Inj Volume : 5.000 µl
Acq. Method : D:\CHEM32\DATA\20161215\20161215 2016-12-15 08-44-48\10-80A(210NM)BC.M
Last changed : 12/15/2016 4:24:46 PM by LCY(HPLC-09)
(modified after loading)
Analysis Method : D:\CHEM32\METHODS\RP-HPLC\10-80A(210NM)BC.M
Last changed : 12/16/2016 8:41:56 AM by LCY(HPLC-09)
(modified after loading)
Catalog No : HY-100614 Batch#22845
A-RP-199

Additional Info : Peak(s) manually integrated



=====
Area Percent Report
=====

Sorted By : Signal
Multiplier: : 1.0000
Dilution: : 1.0000
Use Multiplier & Dilution Factor with ISTDs

No peaks found

=====
*** End of Report ***

Sample Name: BIZ2016-D09-WJ10

```

=====
Acq. Operator   : LCY(HPLC-09)                Seq. Line :   32
Acq. Instrument : Instrument 1                 Location  : Vial 62
Injection Date  : 12/15/2016 4:40:48 PM      Inj       :    1
                                           Inj Volume: 5.000 µl

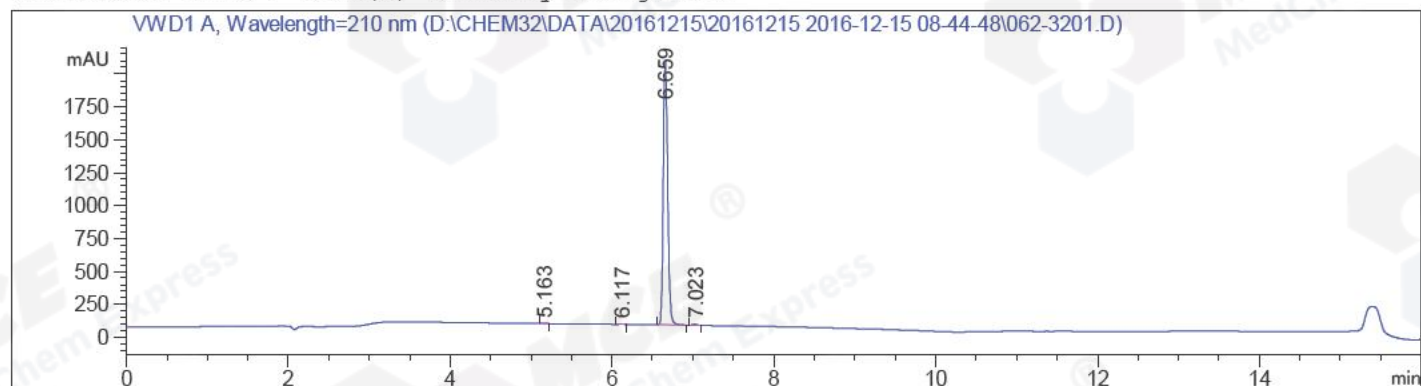
Acq. Method    : D:\CHEM32\DATA\20161215\20161215 2016-12-15 08-44-48\10-80A(210NM)BC.M
Last changed   : 12/15/2016 4:24:46 PM by LCY(HPLC-09)
                 (modified after loading)

Analysis Method: D:\CHEM32\METHODS\RP-HPLC\10-80A(210NM)BC.M
Last changed   : 12/16/2016 8:42:31 AM by LCY(HPLC-09)
                 (modified after loading)

Catalog No     : HY-100614 Batch#22845
                 A-RP-199
=====

```

Additional Info : Peak(s) manually integrated



```

=====
                          Area Percent Report
=====

```

```

Sorted By           :      Signal
Multiplier          :      1.0000
Dilution           :      1.0000
Use Multiplier & Dilution Factor with ISTDs

```

Signal 1: VWD1 A, Wavelength=210 nm

Peak #	RetTime [min]	Type	Width [min]	Area [mAU*s]	Height [mAU]	Area %
1	5.163	MM	0.0593	2.40161	6.74559e-1	0.0315
2	6.117	MM	0.0582	6.29346	1.80089	0.0826
3	6.659	MM	0.0629	7578.84082	2007.38257	99.5101
4	7.023	MM	0.0590	28.61509	8.08753	0.3757

```
Totals :                               7616.15098 2017.94555
```

```

=====
*** End of Report ***

```