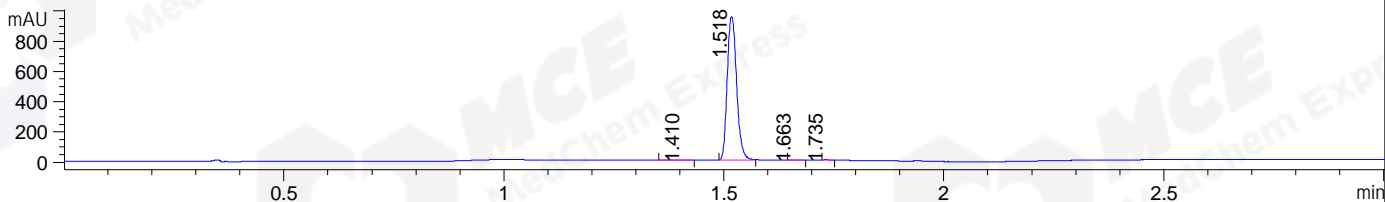
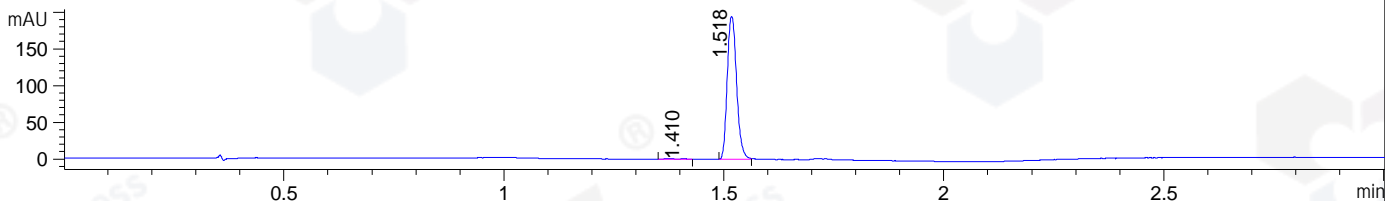


File ..\DATA\2019\20190605\587\CPK2019-604-22065.D Tgt Mass (CHM):
 Injection Date : 5 Jun 19 12:20 pm +0800 Seq. Line : 23
 Sample Name : CPK2019-604-22065 Location : P1-B-05
 Acq. Operator : ZJ_1432 Inj : 1
 Spec. Reported : MS Integration Inj Volume : 1 ul
 Acq. Method : D:\Chem32\1\data\2019\20190605\587\1-POS-3MIN.M
 Analysis Method : D:\CHEM32\1\DATA\2019\20190605\587\1-POS-3MIN.M
 Catalog No : HY-100626 Batch#22065
 Method Info : Mobile Phase: A: water(0.01%TFA) B:ACN(0.01%TFA)
 Gradient: 5% to 95%B within 1.3 min
 Flow Rate :1.8ml/min
 Column :SunFire C18, 4.6*50mm,3.5um A-RP-433
 Oven Temperature : 45

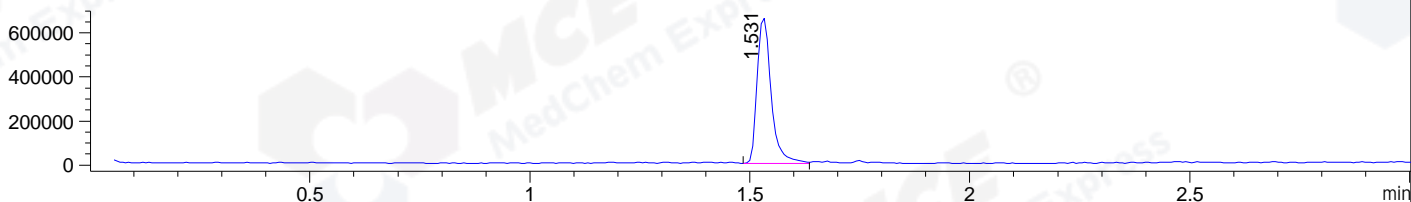
DAD1 B, Sig=214,4 Ref=off



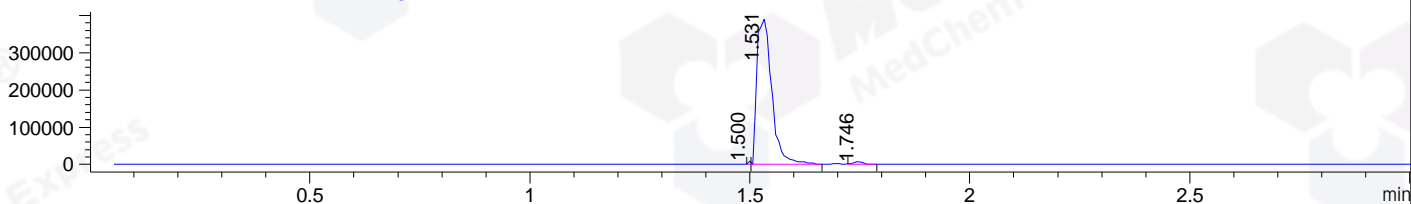
DAD1 C, Sig=254,4 Ref=off



MSD1 TIC, MS File ES-API, Pos, Scan, Frag: 70



Ion 464.4663, MSD1 464.4663, Target Mass 463.4663 +H Positive, EIC=464.17:465.17



Integration Results for DAD1 B, Sig=214,4 Ref=off

RetTim	Width	Area	Height	Area%	MS (+)
1.41	0.03	3.08	1.87	0.22	130
1.52	0.02	1409.47	949.55	99.55	464
1.66	0.01	0.90	1.09	0.06	464
1.73	0.02	2.32	2.46	0.16	464

Integration Results for DAD1 C, Sig=254,4 Ref=off

RetTim	Width	Area	Height	Area%	MS (+)
1.41	0.04	1.75	0.83	0.60	130
1.52	0.02	288.30	194.89	99.40	464

Integration Results for MSD1 TIC, MS File

RetTim	Width	Area	Height	Area%	MS (+)
1.53	0.03	1468965.13	664608.88	100.00	464

Ret. Time: 1.53

<<<< POSITIVE SPECTRA >>>>

ES-API Positive

