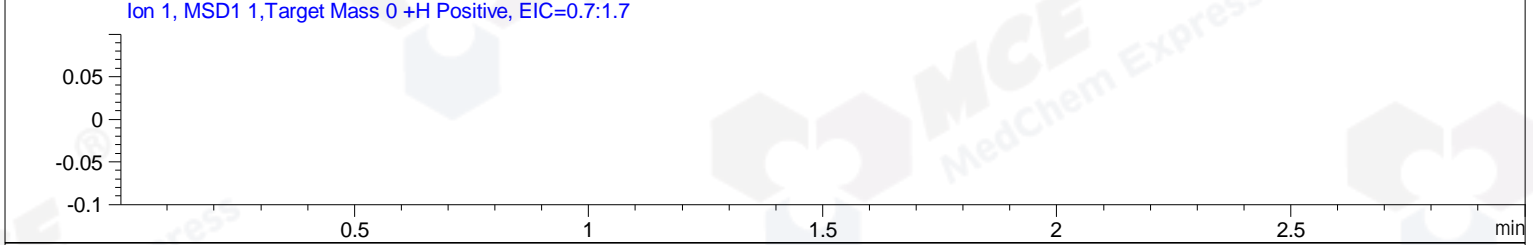
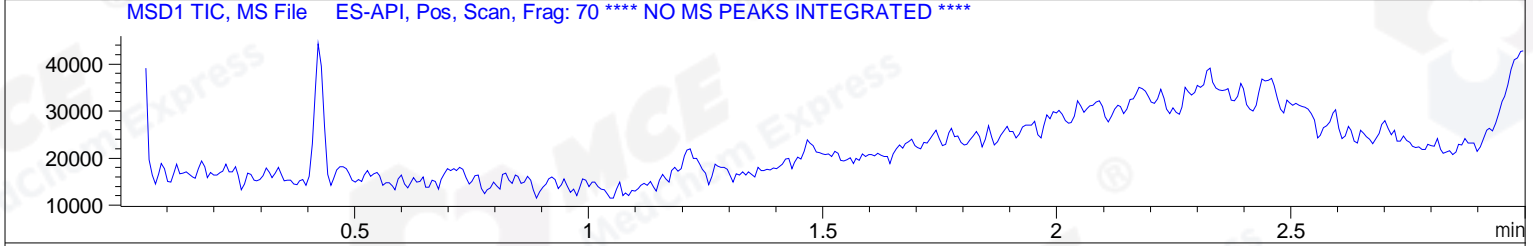
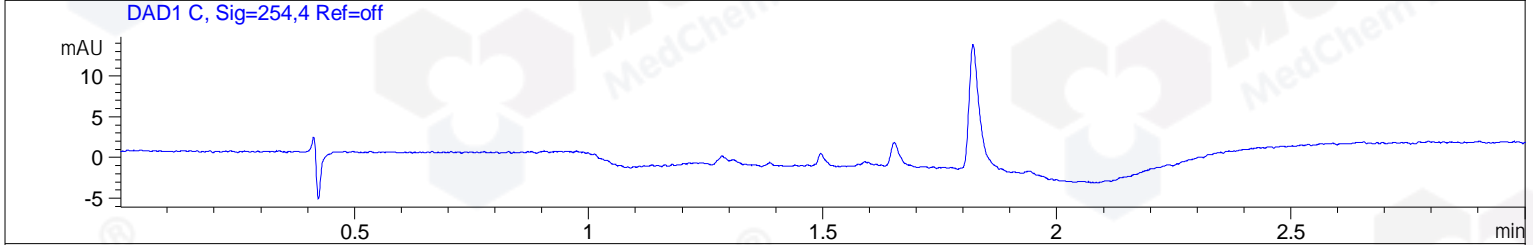
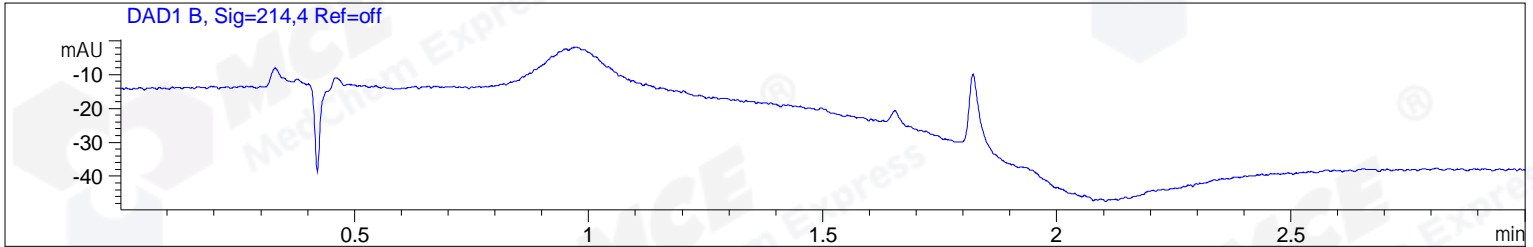


File D:\CHEM32\1\DATA\2019\20191023\735\BLANK2.D Tgt Mass (CHM):
 Injection Date : 23 Oct 19 9:50 am +0800 Seq. Line : 14
 Sample Name : BLANK Location : P1-F-07
 Acq. Operator : ZJ_1432 Inj : 2
 Spec. Reported : MS Integration Inj Volume : 1 ul
 Acq. Method : D:\Chem32\1\data\2019\20191023\735\1-POS-3MIN.M
 Analysis Method : D:\CHEM32\1\DATA\2019\20191023\735\1-POS-3MIN.M
 Catalog No : HY-100703 Batch#48858 BLANK
 Method Info : Mobile Phase: A: water(0.01%TFA) B:ACN(0.01%TFA)
 Gradient: 5% to 95%B within 1.3 min
 Flow Rate :1.8ml/min
 Column :SunFire C18, 4.6*50mm,3.5um A-RP-433
 Oven Temperature : 45



Integration Results for DAD1 B, Sig=214,4 Ref=off

RetTim	Width	Area	Height	Area%	MS (+)
--------	-------	------	--------	-------	--------

Integration Results for DAD1 C, Sig=254,4 Ref=off

RetTim	Width	Area	Height	Area%	MS (+)
--------	-------	------	--------	-------	--------

Integration Results for MSD1 TIC, MS File

RetTim	Width	Area	Height	Area%	MS (+)
--------	-------	------	--------	-------	--------

File ..1\DATA\2019\20191023\735\BIZ2019-O22-SCH1.D Tgt Mass (CHM):

Injection Date : 23 Oct 19 9:54 am +0800 Seq. Line : 15

Sample Name : BIZ2019-O22-SCH1 Location : P1-E-07

Acq. Operator : ZJ_1432 Inj : 1

Spec. Reported : MS Integration Inj Volume : 1 ul

Acq. Method : D:\Chem32\1\data\2019\20191023\735\1-POS-3MIN.M

Analysis Method : D:\CHEM32\1\DATA\2019\20191023\735\1-POS-3MIN.M

Catalog No : HY-100703 Batch#48858

Method Info : Mobile Phase: A: water(0.01%TFA) B:ACN(0.01%TFA)

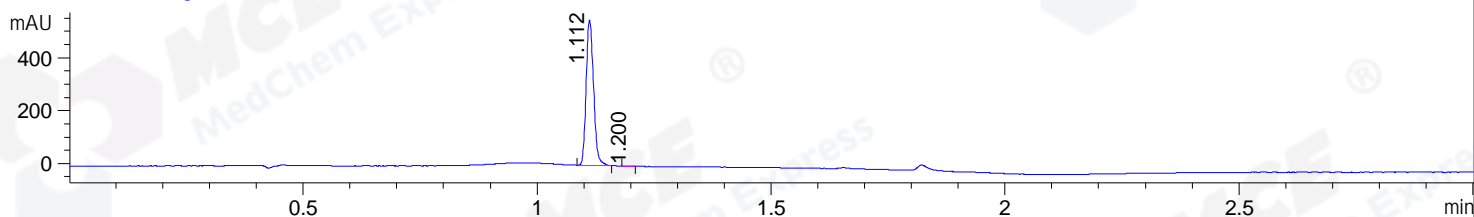
Gradient: 5% to 95%B within 1.3 min

Flow Rate :1.8ml/min

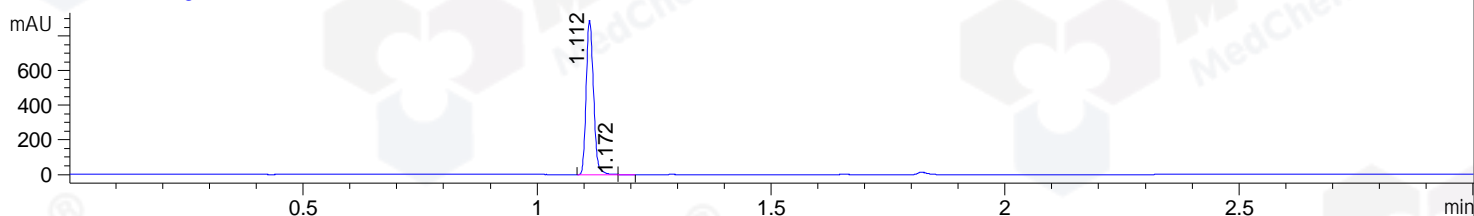
Column :SunFire C18, 4.6*50mm,3.5um A-RP-433

Oven Temperature : 45

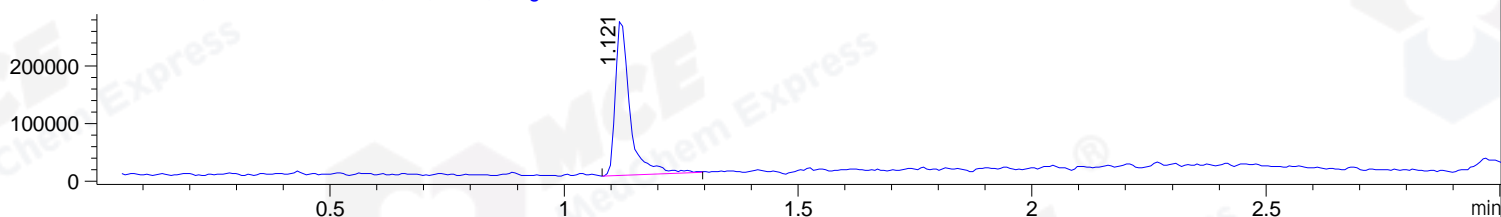
DAD1 B, Sig=214,4 Ref=off



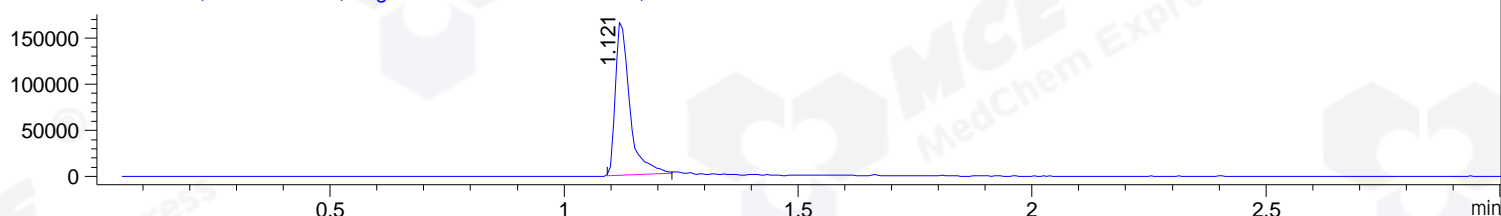
DAD1 C, Sig=254,4 Ref=off



MSD1 TIC, MS File ES-API, Pos, Scan, Frag: 70



Ion 376.23, MSD1 376.23, Target Mass 375.23 +H Positive, EIC=375.93:376.93



Integration Results for DAD1 B, Sig=214,4 Ref=off

RetTim	Width	Area	Height	Area%	MS (+)
1.11	0.02	608.83	551.67	99.89	376
1.20	0.02	0.70	0.68	0.11	376

Integration Results for DAD1 C, Sig=254,4 Ref=off

RetTim	Width	Area	Height	Area%	MS (+)
1.11	0.02	976.34	893.54	99.92	376
1.17	0.01	0.76	0.91	0.08	376

Integration Results for MSD1 TIC, MS File

RetTim	Width	Area	Height	Area%	MS (+)
1.12	0.03	583870.44	272989.31	100.00	376

Ret. Time: 1.12

<<<< POSITIVE SPECTRA >>>>

ES-API Positive

