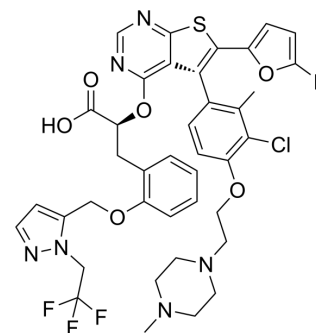


## (S,R)-S63845

|                    |  |
|--------------------|--|
| Cat. No.:          | HY-100741A   |
| Molecular Formula: | C <sub>39</sub> H <sub>37</sub> ClF <sub>4</sub> N <sub>6</sub> O <sub>6</sub> S               |
| Molecular Weight:  | 829.26   |
| Target:            | Others   |
| Pathway:           | Others   |
| Storage:           | 4°C, protect from light<br>* In solvent : -80°C, 6 months; -20°C, 1 month (protect from light) |



## BIOLOGICAL ACTIVITY

### Description

(S,R)-S63845 is the isomer of S63845 (HY-100741), and can be used as an experimental control. S63845 is a potent and selective myeloid cell leukemia 1 (MCL1) inhibitor with a  $K_d$  of 0.19 nM for human MCL1<sup>[1]</sup>.

## REFERENCES

[1]. Kotschy A, et al. The MCL1 inhibitor S63845 is tolerable and effective in diverse cancer models. *Nature*. 2016 Oct 27;538(7626):477-482.

**Caution: Product has not been fully validated for medical applications. For research use only.**

Tel: 609-228-6898

Fax: 609-228-5909

E-mail: tech@MedChemExpress.com

Address: 1 Deer Park Dr, Suite Q, Monmouth Junction, NJ 08852, USA