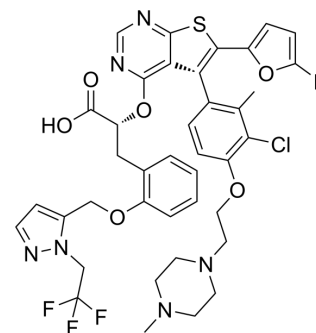


## (R,R)-S63845

Cat. No.:	HY-100741C
Molecular Formula:	C <sub>39</sub> H <sub>37</sub> ClF <sub>4</sub> N <sub>6</sub> O <sub>6</sub> S
Molecular Weight:	829.26
Target:	Others
Pathway:	Others
Storage:	4°C, protect from light * In solvent : -80°C, 6 months; -20°C, 1 month (protect from light)



### SOLVENT & SOLUBILITY

#### In Vitro

DMSO : 300 mg/mL (361.77 mM; Need ultrasonic)

Solvent	Mass	Concentration		
		1 mg	5 mg	10 mg
Preparing Stock Solutions	1 mM	1.2059 mL	6.0295 mL	12.0589 mL
	5 mM	0.2412 mL	1.2059 mL	2.4118 mL
	10 mM	0.1206 mL	0.6029 mL	1.2059 mL

Please refer to the solubility information to select the appropriate solvent.

### BIOLOGICAL ACTIVITY

#### Description

(R,R)-S63845 is the isomer of S63845 (HY-100741), and can be used as an experimental control. S63845 is a potent and selective myeloid cell leukemia 1 (MCL1) inhibitor with a K<sub>D</sub> of 0.19 nM for human MCL1<sup>[1]</sup>.

**Caution: Product has not been fully validated for medical applications. For research use only.**

Tel: 609-228-6898

Fax: 609-228-5909

E-mail: tech@MedChemExpress.com

Address: 1 Deer Park Dr, Suite Q, Monmouth Junction, NJ 08852, USA