

File ..\DATA\2020\20200606\987\BIZ2020-604-SCH8-.D Tgt Mass (CHM):

Injection Date : 6 Jun 20 5:49 pm +0800 Seq. Line : 91

Sample Name : BIZ2020-604-SCH8 Location : PL-C-02

Acq. Operator : ZJ\_1432 Inj : 1

Spec. Reported : MS Integration Inj Volume : 0.4 ul

Acq. Method : D:\Chem32\1\data\2020\20200606\987\1-POS-3MIN.M

Analysis Method : D:\CHEM32\1\DATA\2020\20200606\987\1-POS-3MIN.M

Catalog No : HY-100753

Method Info : Mobile Phase: A: water(0.01%TFA) B:ACN(0.01%TFA)

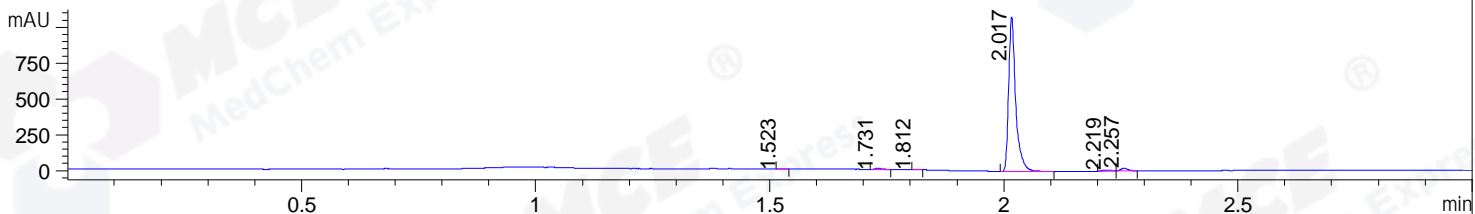
Gradient: 5% to 95%B within 1.3 min

Flow Rate :1.8ml/min

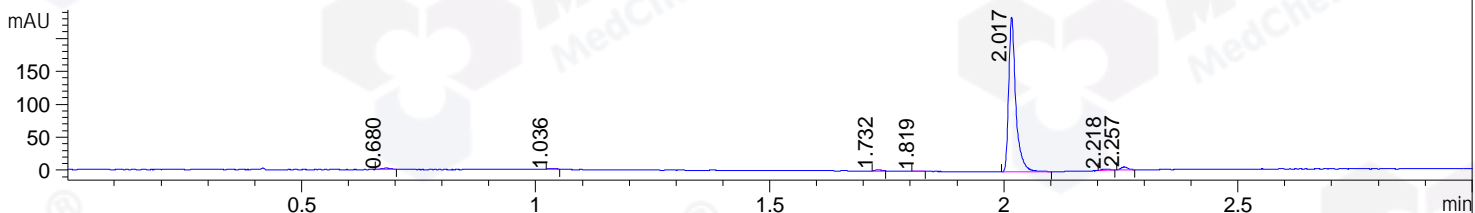
Column :SunFire C18, 4.6\*50mm,3.5um A-RP-607

Oven Temperature : 45□

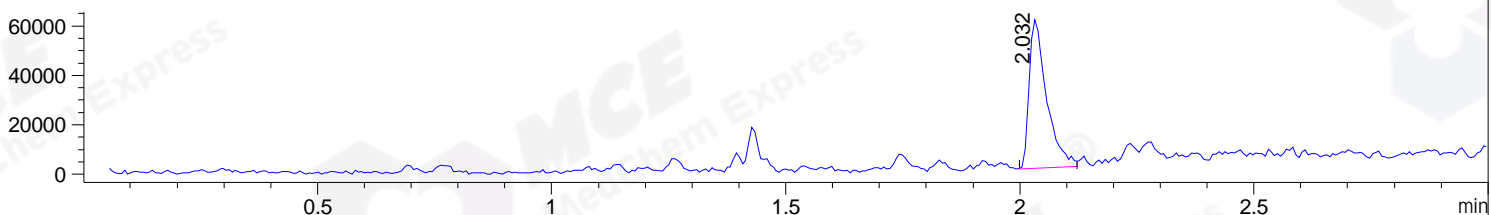
DAD1 B, Sig=214,4 Ref=off



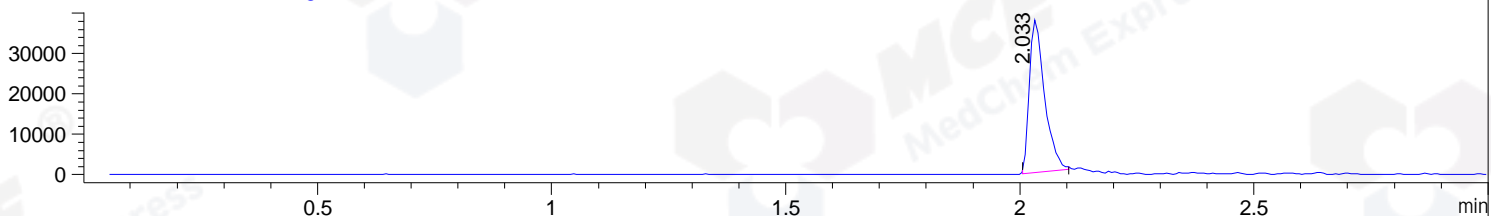
DAD1 C, Sig=254,4 Ref=off



MSD1 TIC, MS File ES-API, Pos, Scan, Frag: 70



Ion 476, MSD1 476, Target Mass 475 +H Positive, EIC=475.7:476.7



Integration Results for DAD1 B, Sig=214,4 Ref=off

RetTim	Width	Area	Height	Area%	MS (+)
1.52	0.01	1.40	1.85	0.12	ND
1.73	0.02	7.46	8.09	0.63	ND
1.81	0.01	1.29	1.83	0.11	ND
2.02	0.02	1136.47	1080.34	96.54	476
2.22	0.02	10.25	7.41	0.87	651
2.26	0.02	20.35	19.15	1.73	635

Integration Results for DAD1 C, Sig=254,4 Ref=off

RetTim	Width	Area	Height	Area%	MS (+)
0.68	0.02	2.54	1.72	0.97	ND
1.04	0.02	1.11	1.22	0.43	ND
1.73	0.01	1.62	2.02	0.62	ND
1.82	0.02	0.66	0.60	0.25	ND
2.02	0.02	249.16	235.27	95.05	476
2.22	0.02	2.51	2.17	0.96	651
2.26	0.02	4.54	4.44	1.73	635

## Integration Results for MSD1 TIC, MS File

RetTim	Width	Area	Height	Area%	MS (+)
2.03	0.04	155147.16	60187.07	100.00	476

Ret. Time: 2.03

<<<< POSITIVE SPECTRA >>>>

ES-API Positive

