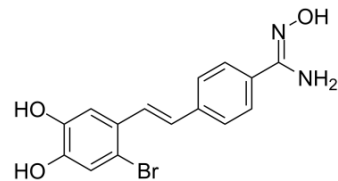


## LSD1-IN-6

Cat. No.:	HY-100860
CAS No.:	2035912-43-5
Molecular Formula:	C <sub>15</sub> H <sub>13</sub> BrN <sub>2</sub> O <sub>3</sub>
Molecular Weight:	349.18
Target:	Histone Demethylase
Pathway:	Epigenetics
Storage:	Please store the product under the recommended conditions in the COA.



### BIOLOGICAL ACTIVITY

Description	LSD1-IN-6 (Compound 4m) is a potent and reversible inhibitor of lysine-specific demethylase 1 (LSD1), with an IC <sub>50</sub> of 123 nM. LSD1-IN-6 increases dimethylated Lys4 of histone H3, shows no effect on expression of LSD1 <sup>[1]</sup> .
IC <sub>50</sub> & Target	IC <sub>50</sub> : 123 nM (LSD1) <sup>[1]</sup>

### REFERENCES

[1]. Duan YC, et al. Discovery of resveratrol derivatives as novel LSD1 inhibitors: Design, synthesis and their biological evaluation. Eur J Med Chem. 2017 Jan 27;126:246-258.

**Caution: Product has not been fully validated for medical applications. For research use only.**

Tel: 609-228-6898

Fax: 609-228-5909

E-mail: tech@MedChemExpress.com

Address: 1 Deer Park Dr, Suite Q, Monmouth Junction, NJ 08852, USA