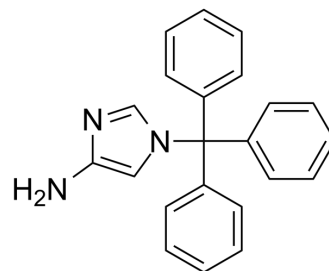


CDD3506

Cat. No.:	HY-100902		
CAS No.:	197913-15-8		
Molecular Formula:	C ₂₂ H ₁₉ N ₃		
Molecular Weight:	325.41		
Target:	Cytochrome P450		
Pathway:	Metabolic Enzyme/Protease		
Storage:	Powder	-20°C	3 years
		4°C	2 years
	In solvent	-80°C	6 months
		-20°C	1 month



SOLVENT & SOLUBILITY

In Vitro	DMSO : 19 mg/mL (58.39 mM; Need ultrasonic)			
		Solvent Concentration	Mass	
			1 mg	5 mg
			10 mg	
	Preparing Stock Solutions	1 mM	3.0730 mL	15.3652 mL
	5 mM	0.6146 mL	3.0730 mL	6.1461 mL
	10 mM	0.3073 mL	1.5365 mL	3.0730 mL
Please refer to the solubility information to select the appropriate solvent.				
In Vivo	1. Add each solvent one by one: 10% DMSO >> 40% PEG300 >> 5% Tween-80 >> 45% saline Solubility: 1.9 mg/mL (5.84 mM); Suspended solution; Need ultrasonic 2. Add each solvent one by one: 10% DMSO >> 90% (20% SBE-β-CD in saline) Solubility: 1.9 mg/mL (5.84 mM); Suspended solution; Need ultrasonic			

BIOLOGICAL ACTIVITY

Description	CDD3506 is used for elevating high density lipoprotein cholesterol (HDL) by inducing hepatic cytochrome P450III A (CYP3A) activity.
In Vitro	CDD3506 specifically induces hepatic cytochrome P450III A produces significant increases in HDL cholesterol ^[1] . MCE has not independently confirmed the accuracy of these methods. They are for reference only.

REFERENCES

Caution: Product has not been fully validated for medical applications. For research use only.

Tel: 609-228-6898

Fax: 609-228-5909

E-mail: tech@MedChemExpress.com

Address: 1 Deer Park Dr, Suite Q, Monmouth Junction, NJ 08852, USA