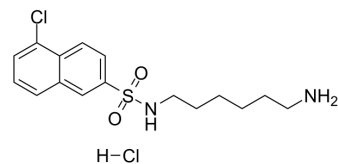


## W-7 isomer hydrochloride

Cat. No.:	HY-100913		
CAS No.:	69762-85-2		
Molecular Formula:	C <sub>16</sub> H <sub>22</sub> Cl <sub>2</sub> N <sub>2</sub> O <sub>2</sub> S		
Molecular Weight:	377.33		
Target:	Calmodulin		
Pathway:	Membrane Transporter/Ion Channel		
Storage:	Powder	-20°C	3 years
		4°C	2 years
	In solvent	-80°C	6 months
		-20°C	1 month



### SOLVENT & SOLUBILITY

#### In Vitro

DMSO : 250 mg/mL (662.55 mM; Need ultrasonic)  
 H<sub>2</sub>O : 20.83 mg/mL (55.20 mM; Need ultrasonic)

Preparing Stock Solutions	Solvent	Mass	1 mg	5 mg	10 mg
	Concentration				
	1 mM		2.6502 mL	13.2510 mL	26.5020 mL
	5 mM		0.5300 mL	2.6502 mL	5.3004 mL
	10 mM		0.2650 mL	1.3251 mL	2.6502 mL

Please refer to the solubility information to select the appropriate solvent.

### BIOLOGICAL ACTIVITY

#### Description

W-7 isomer hydrochloride is an isomer of [W-7 hydrochloride](#) (HY-100912). W-7 hydrochloride is a selective calmodulin antagonist<sup>[1]</sup>.

### REFERENCES

[1]. H Hidaka, et al. N-(6-aminoheptyl)-5-chloro-1-naphthalenesulfonamide, a Calmodulin Antagonist, Inhibits Cell Proliferation. Proc Natl Acad Sci U S A. 1981 Jul;78(7):4354-7.

---

**Caution: Product has not been fully validated for medical applications. For research use only.**

Tel: 609-228-6898

Fax: 609-228-5909

E-mail: [tech@MedChemExpress.com](mailto:tech@MedChemExpress.com)

Address: 1 Deer Park Dr, Suite Q, Monmouth Junction, NJ 08852, USA