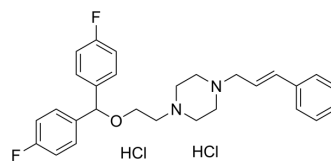


GBR-12879 dihydrochloride

Cat. No.:	HY-100929
CAS No.:	67469-45-8
Molecular Formula:	C ₂₈ H ₃₂ Cl ₂ F ₂ N ₂ O
Molecular Weight:	521.47
Target:	Dopamine Receptor
Pathway:	GPCR/G Protein; Neuronal Signaling
Storage:	Please store the product under the recommended conditions in the Certificate of Analysis.



BIOLOGICAL ACTIVITY

Description	GBR-12879 dihydrochloride is a potent inhibitor of dopamine uptake ^[1] .
-------------	---

REFERENCES

[1]. van der Zee P, et al. Interaction between substituted 1-[2-(diphenylmethoxy)ethyl] piperazines and dopamine receptors. *Neuropharmacology*. 1985 Dec;24(12):1171-4.

Caution: Product has not been fully validated for medical applications. For research use only.

Tel: 609-228-6898

Fax: 609-228-5909

E-mail: tech@MedChemExpress.com

Address: 1 Deer Park Dr, Suite Q, Monmouth Junction, NJ 08852, USA