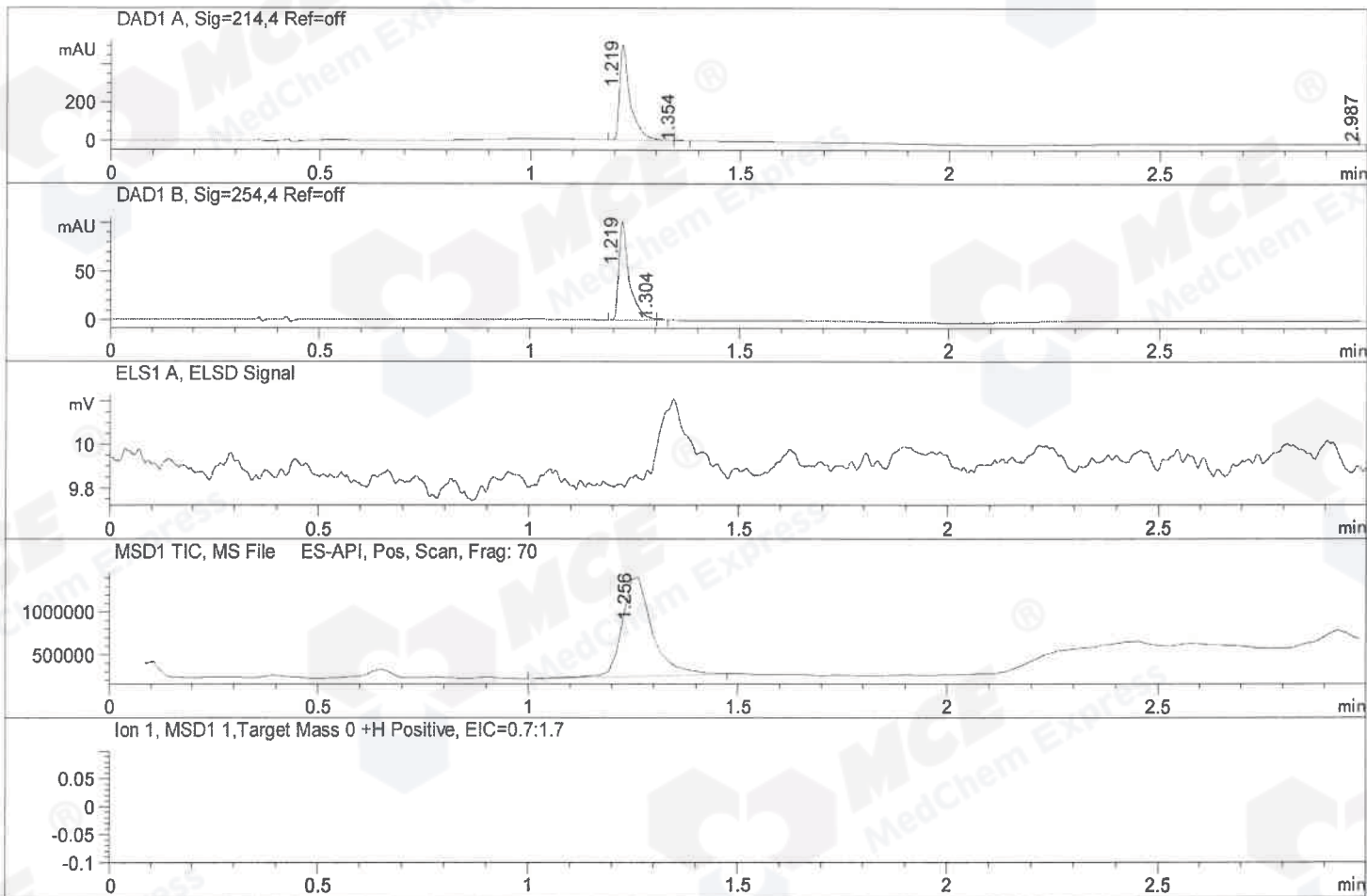


File ..MS03\Data\20190507\20190507\ZFX6644-002-1.D Tgt Mass (CHM):  
 Injection Date : 7 May 19 11:42 am +0800 Seq. Line : 32  
 Sample Name : ZFX6644-002-1 Location : P1-C-09  
 Acq. Operator : SYSTEM Inj : 1  
 Spec. Reported : MS Integration Inj Volume : 1 ul  
 Acq. Method : D:\LCMS03\Data\20190507\20190507\1-POS-3MIN.M  
 Analysis Method : D:\LCMS03\Data\20190507\20190507\1-POS-3MIN.M

Method Info : Mobile Phase: A: water(0.01%TFA) B:ACN(0.01%TFA)  
 Gradient: 5% to 95%B within 1.3 min  
 Flow Rate :1.8ml/min  
 Column :SunFire C18, 4.6\*50mm,3.5um A-RP-392  
 Oven Temperature : 45C  
 Catalog No: HY-10095 Batch#40945



Integration Results for DAD1 A, Sig=214,4 Ref=off

RetTim	Width	Area	Height	Area%	MS(+)
1.22	0.03	864.47	496.99	99.86	435
1.35	0.01	1.19	1.38	0.14	114
2.99	0.01	0.03	0.06	0.00	114

Integration Results for DAD1 B, Sig=254,4 Ref=off

RetTim	Width	Area	Height	Area%	MS(+)
1.22	0.03	173.50	100.94	99.65	435
1.30	0.01	0.61	0.75	0.35	114

Integration Results for ELS1 A, ELSD Signal

RetTim	Width	Area	Height	Area%	MS(+)

Integration Results for MSD1 TIC, MS File

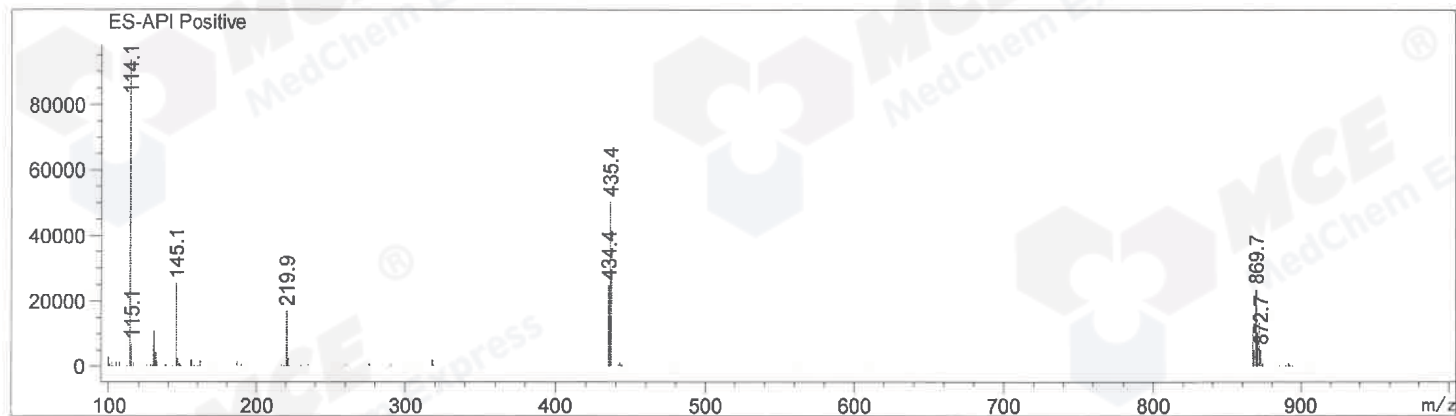
RetTim	Width	Area	Height	Area%	MS(+)

1.26      0.08      5831947.00      1191087.25      100.00      114

RetTim	Width	Area	Height	Area%	MS(+)
--------	-------	------	--------	-------	-------

-----|-----|-----|-----|-----|-----|

Ret. Time: 1.26 <<<< POSITIVE SPECTRA >>>>



\*\*\* End of Report \*\*\*