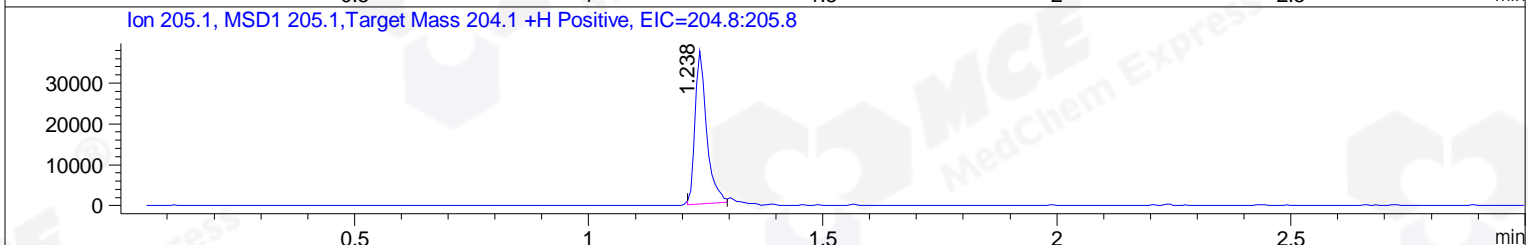
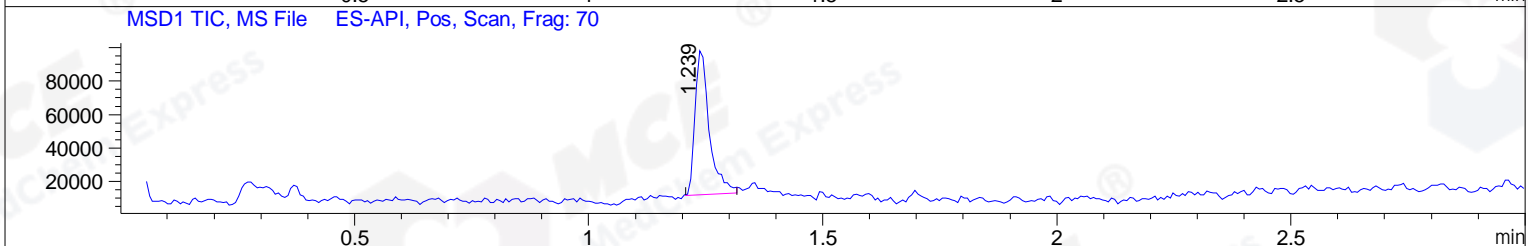
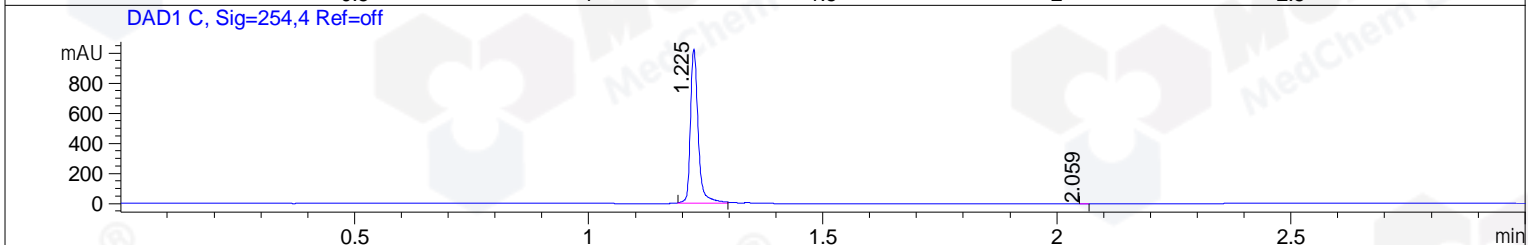
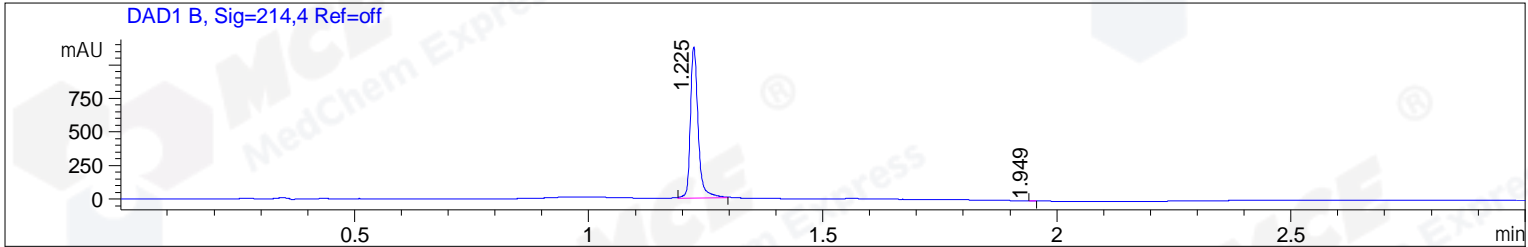


File ..1\DATA\2019\20190318\556\BIZ2019-315-CXL2.D Tgt Mass (CHM):  
 Injection Date : 18 Mar 19 11:41 am +0800 Seq. Line : 24  
 Sample Name : BIZ2019-315-CXL2 Location : P2-D-02  
 Acq. Operator : LQ\_1052 Inj : 1  
 Spec. Reported : MS Integration Inj Volume : 1 ul  
 Acq. Method : D:\Chem32\1\data\2019\20190318\556\1-POS-3MIN-1.M  
 Analysis Method : D:\CHEM32\1\DATA\2019\20190318\556\1-POS-3MIN-1.M  
 Catalog No : HY-100962 Batch# 39004-20190315  
 Method Info : Mobile Phase: A: water(0.01%TFA) B:ACN(0.01%TFA)  
 Gradient: 5% to 95%B within 1.3 min  
 Flow Rate :1.8ml/min  
 Column :SunFire C18, 4.6\*50mm,3.5um A-RP-314  
 Oven Temperature : 45



Integration Results for DAD1 B, Sig=214,4 Ref=off

RetTim	Width	Area	Height	Area%	MS (+)
1.22	0.02	1301.55	1127.09	99.98	205
1.95	0.01	0.20	0.34	0.02	ND

Integration Results for DAD1 C, Sig=254,4 Ref=off

RetTim	Width	Area	Height	Area%	MS (+)
1.22	0.02	1181.65	1025.37	99.99	205
2.06	0.01	0.08	0.11	0.01	175

Integration Results for MSD1 TIC, MS File

RetTim	Width	Area	Height	Area%	MS (+)
1.24	0.03	183645.41	87842.76	100.00	205

Ret. Time: 1.24

<<<< POSITIVE SPECTRA >>>>

ES-API Positive

