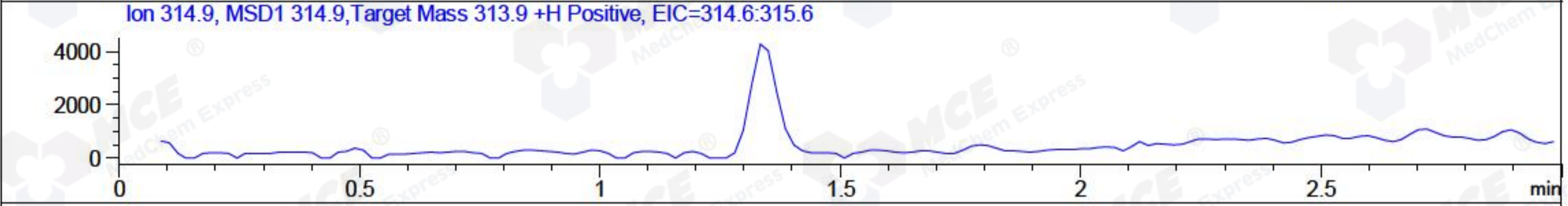
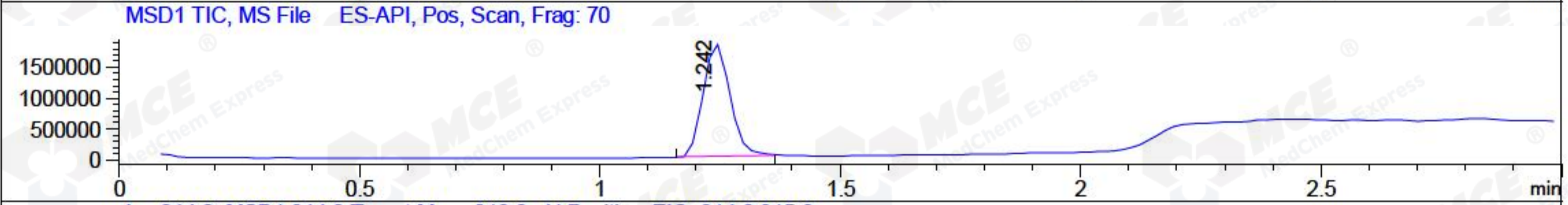
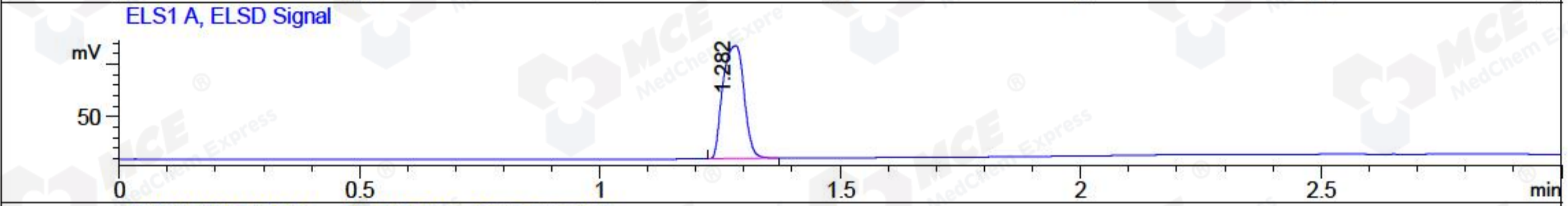
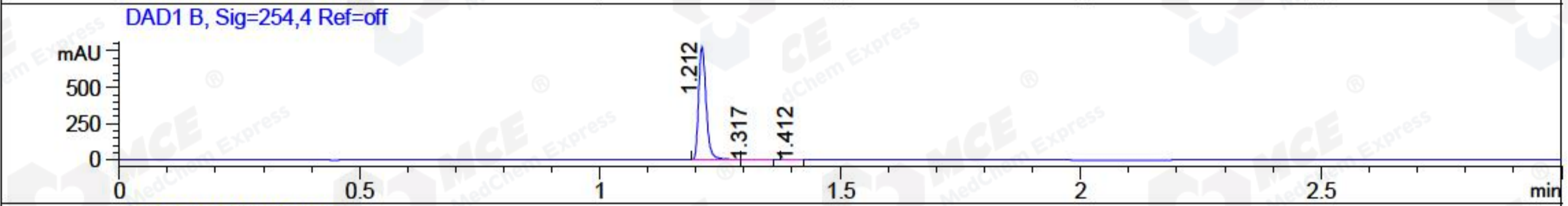
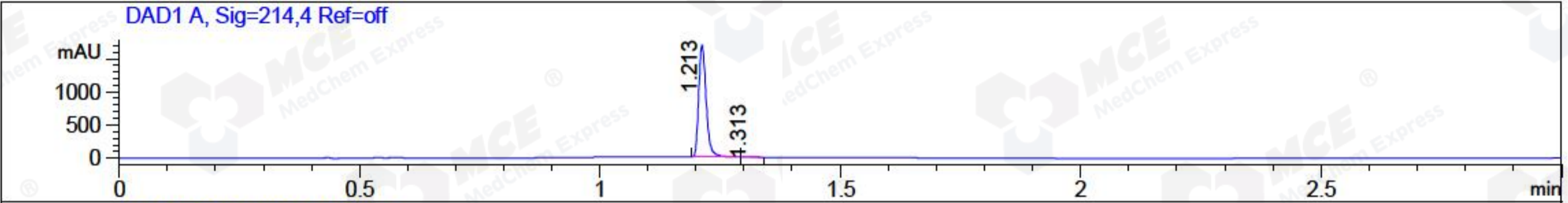


File ..2018\20180307\20180307-1\BIZ2018-307-WYQ5.D Tgt Mass (CHM):
 Injection Date : 7 Mar 18 2:48 pm +0800 Seq. Line : 29
 Sample Name : BIZ2018-307-WYQ5 Location : P1-E-05
 Acq. Operator : SYSTEM Inj : 1
 Spec. Reported : MS Integration Inj Volume : 1 ul
 Acq. Method : D:\LCMS03\Data\2018\20180307\20180307-1\1-POS-3MIN.M
 Analysis Method : D:\LCMS03\Data\2018\20180307\20180307-1\1-POS-3MIN.M
 Catalog No : HY-100965 Batch#28917
 Method Info : Mobile Phase: A: water(0.01%TFA) B:ACN(0.01%TFA)
 Gradient: 5% to 95%B within 1.3 min
 Flow Rate :1.8ml/min
 Column :SunFire C18, 4.6*50mm,3.5um A-RP-186
 Oven Temperature : 45C



Integration Results for DAD1 A, Sig=214,4 Ref=off

RetTim	Width	Area	Height	Area%	MS (+)
1.21	0.02	1814.75	1681.06	99.87	279
1.31	0.02	2.38	1.85	0.13	279

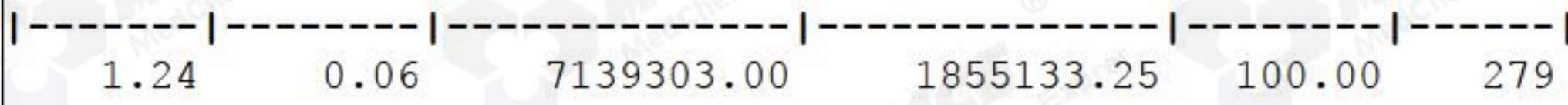
Integration Results for DAD1 B, Sig=254,4 Ref=off

RetTim	Width	Area	Height	Area%	MS (+)
1.21	0.02	839.25	774.50	99.85	279
1.32	0.03	1.08	0.67	0.13	279
1.41	0.02	0.18	0.14	0.02	279

Integration Results for ELS1 A, ELSD Signal

RetTim	Width	Area	Height	Area%	MS (+)
1.28	0.05	329.86	107.77	100.00	279

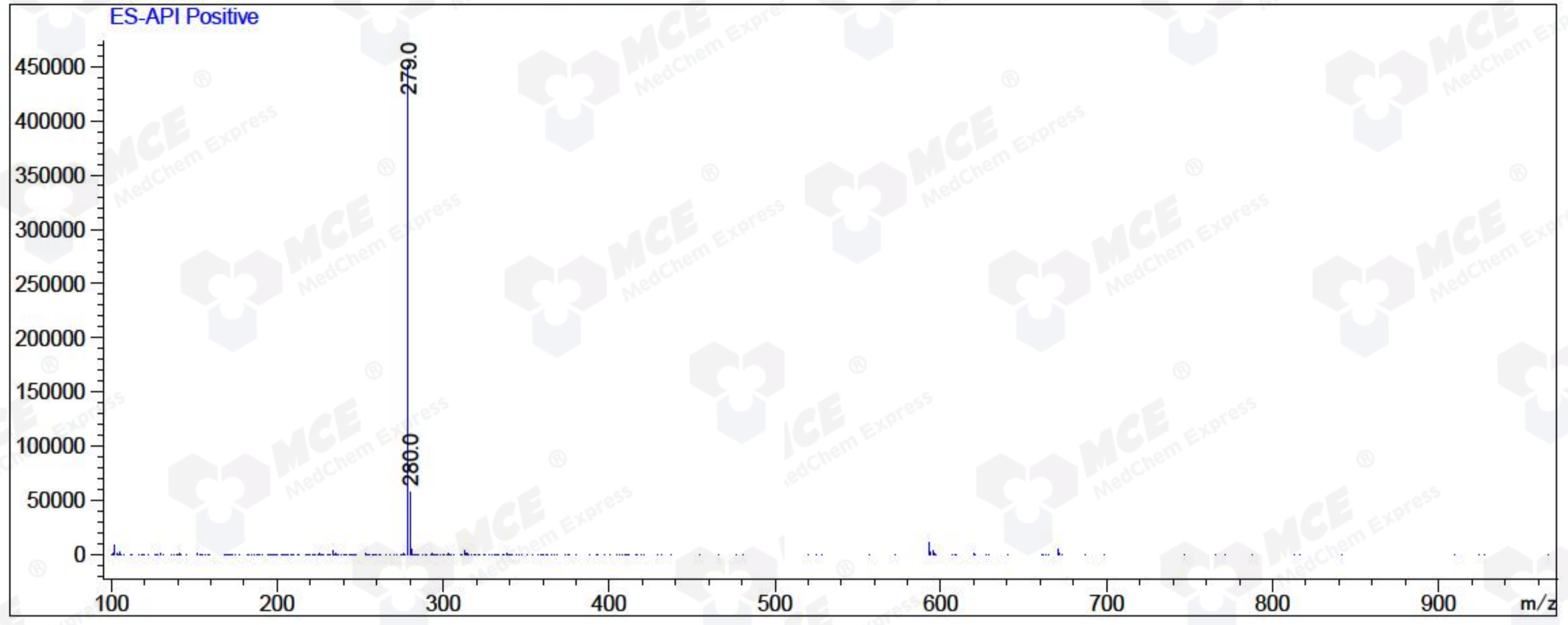
Integration Results for MSD1 TIC, MS File



RetTim	Width	Area	Height	Area%	MS (+)
--------	-------	------	--------	-------	--------

Ret. Time: 1.24

<<<< POSITIVE SPECTRA >>>>



*** End of Report ***