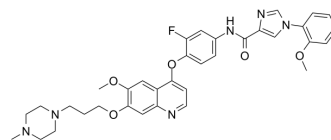


c-Met-IN-1

Cat. No.:	HY-101031
CAS No.:	2084836-84-8
Molecular Formula:	C ₃₅ H ₃₇ FN ₆ O ₅
Molecular Weight:	640.7
Target:	c-Met/HGFR
Pathway:	Protein Tyrosine Kinase/RTK
Storage:	Please store the product under the recommended conditions in the Certificate of Analysis.



BIOLOGICAL ACTIVITY

Description	c-met-IN-1 (compound 16) is a potent and selective c-Met inhibitor, with IC ₅₀ of 1.1 nM, with antitumor activity. ^[1]
IC ₅₀ & Target	IC ₅₀ : 1.1 nM (c-Met) ^[1]
In Vitro	c-met-IN-1 (compound 16) exhibits high selectivity and remarkable cytotoxicity against HT-29, MKN-45 and A549 cells with IC ₅₀ values of 0.08 μM, 0.22 μM and 0.07 μM, respectively ^[1] . MCE has not independently confirmed the accuracy of these methods. They are for reference only.

REFERENCES

[1]. Wang X, et al. Design, synthesis and biological evaluation of novel 4-(2-fluorophenoxy)quinoline derivatives as selective c-Met inhibitors. *Bioorg Med Chem*. 2017 Feb 1;25(3):886-896.

Caution: Product has not been fully validated for medical applications. For research use only.

Tel: 609-228-6898

Fax: 609-228-5909

E-mail: tech@MedChemExpress.com

Address: 1 Deer Park Dr, Suite Q, Monmouth Junction, NJ 08852, USA