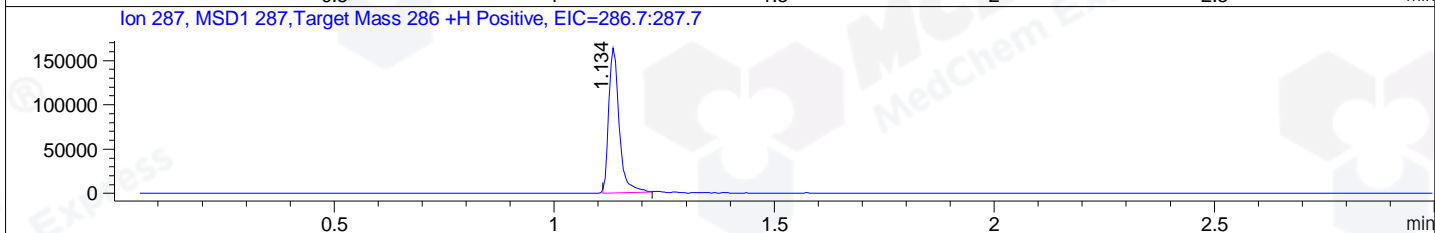
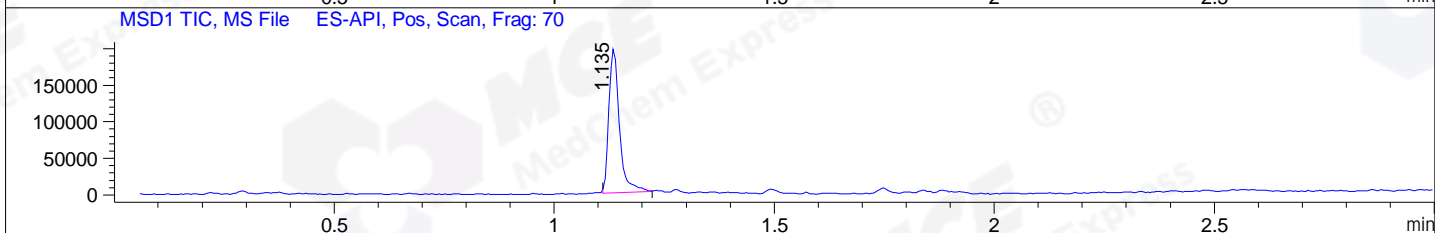
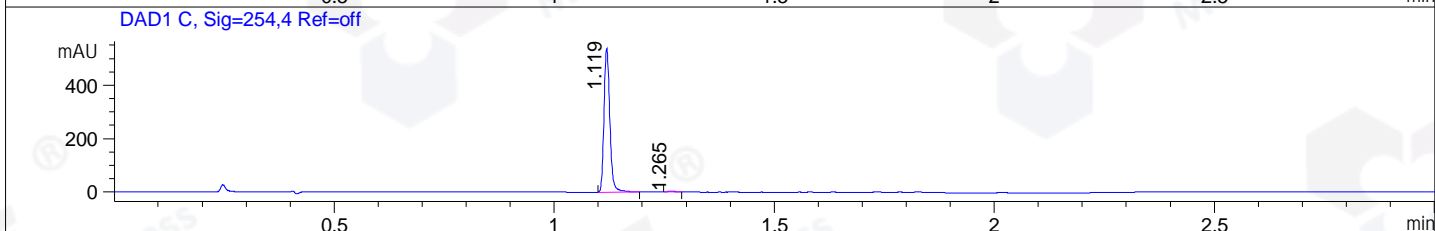
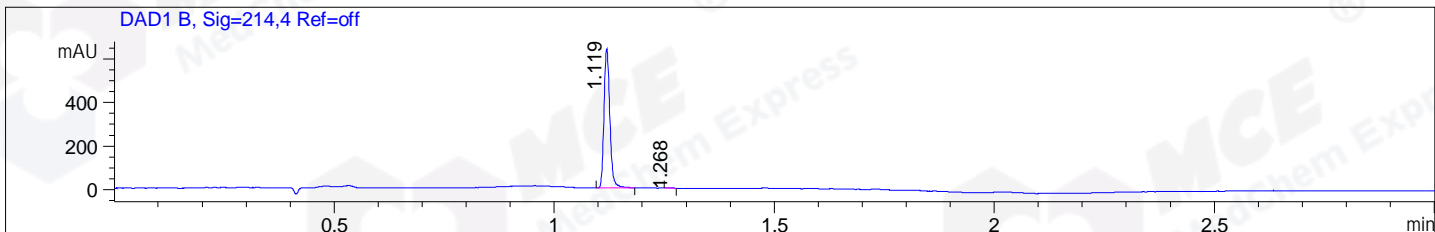


File ..DATA\2020\20201229\1223\CPK2020-D28-31265.D Tgt Mass (CHM):
Injection Date : 29 Dec 20 7:54 pm +0800 Seq. Line : 129
Sample Name : CPK2020-D28-31265 Location : P1-C-04
Acq. Operator : zyj_1547 Inj : 1
Spec. Reported : MS Integration Inj Volume : 1 ul
Acq. Method : D:\Chem32\1\data\2020\20201229\1223\1-POS-3MIN.M
Analysis Method : D:\CHEM32\1\DATA\2020\20201229\1223\1-POS-3MIN.M
CAS NO. : 909089-13-0
Method Info : Mobile Phase: A: water(0.01%TFA) B:ACN(0.01%TFA)
Gradient: 5% to 95%B within 1.3 min
Flow Rate :1.8ml/min
Column :SunFire C18, 4.6*50mm,3.5um A-RP-698



Integration Results for DAD1 B, Sig=214,4 Ref=off

RetTim	Width	Area	Height	Area%	MS (+)
1.12	0.02	589.84	640.93	99.54	287
1.27	0.02	2.72	2.78	0.46	ND

Integration Results for DAD1 C, Sig=254,4 Ref=off

RetTim	Width	Area	Height	Area%	MS (+)
1.12	0.02	497.18	539.75	99.33	287
1.27	0.02	3.36	3.17	0.67	ND

Integration Results for MSD1 TIC, MS File

RetTim	Width	Area	Height	Area%	MS (+)
1.13	0.03	330903.16	196713.16	100.00	287

Ret. Time: 1.13

<<<< POSITIVE SPECTRA >>>>

ES-API Positive

