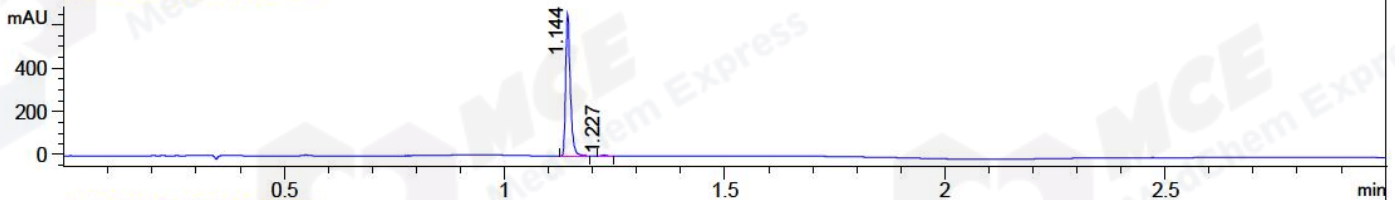
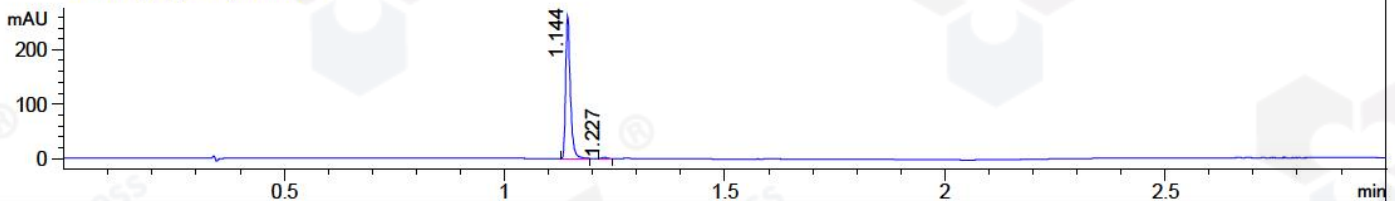


File ..M32\1\DATA\20180611\244\CPK2018-611-10574.D Tgt Mass (CHM):  
 Injection Date : 11 Jun 18 6:10 pm +0800 Seq. Line : 5  
 Sample Name : CPK2018-611-10574 Location : P2-D-02  
 Acq. Operator : LQ\_1052 Inj : 1  
 Spec. Reported : MS Integration Inj Volume : 1 ul  
 Acq. Method : D:\chem32\1\DATA\20180611\244\1-POS-3MIN-1.M  
 Analysis Method : D:\CHEM32\1\DATA\20180611\244\1-POS-3MIN-1.M  
 Catalog No : HY-10111 Batch#10574 A-RP-314  
 Method Info : Mobile Phase: A: water(0.01%TFA) B:ACN(0.01%TFA)  
 Gradient: 5% to 95%B within 1.3 min  
 Flow Rate :1.8ml/min  
 Column :SunFire C18, 4.6\*50mm,3.5um A-RP-314  
 Oven Temperature : 45□

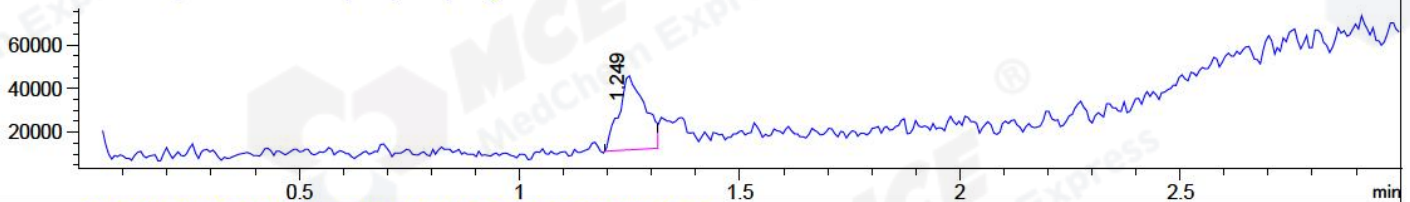
DAD1 B, Sig=214,4 Ref=off



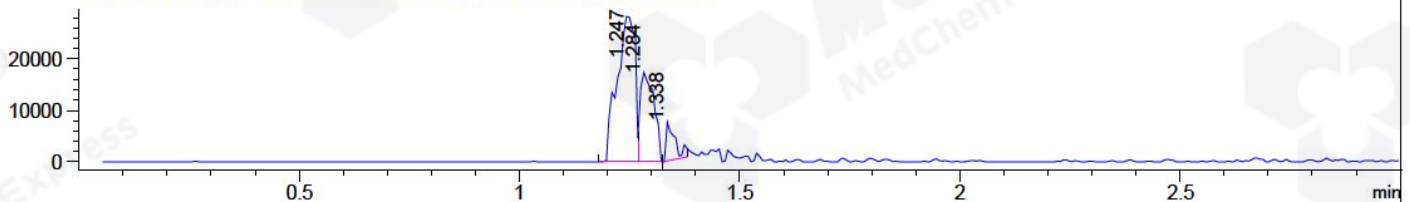
DAD1 C, Sig=254,4 Ref=off



MSD1 TIC, MS File ES-API, Pos, Scan, Frag: 70



Ion 347.4, MSD1 347.4, Target Mass 346.4 +H Positive, EIC=347.1:348.1



## Integration Results for DAD1 B, Sig=214,4 Ref=off

RetTim	Width	Area	Height	Area%	MS (+)
1.14	0.01	486.94	659.79	99.31	ND
1.23	0.01	3.39	4.33	0.69	347

## Integration Results for DAD1 C, Sig=254,4 Ref=off

RetTim	Width	Area	Height	Area%	MS (+)
1.14	0.01	193.72	262.92	99.31	ND
1.23	0.01	1.34	1.87	0.69	347

## Integration Results for MSD1 TIC, MS File

RetTim	Width	Area	Height	Area%	MS (+)
1.25	0.05	139250.72	34134.97	100.00	347

Ret. Time: 1.25

<<<< POSITIVE SPECTRA >>>>

