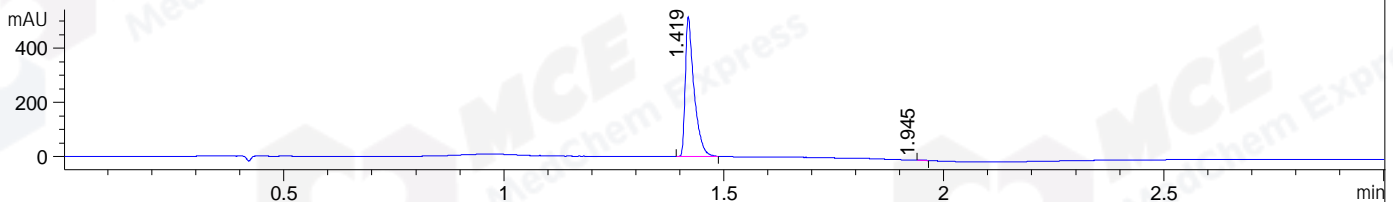
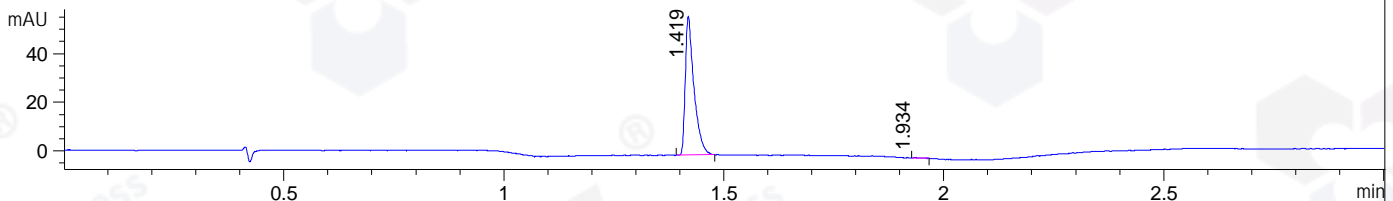


File ..1\DATA\2019\20191008\720\BIZ2019-008-CXL2.D Tgt Mass (CHM):
 Injection Date : 8 Oct 19 7:14 pm +0800 Seq. Line : 111
 Sample Name : BIZ2019-008-CXL2 Location : P1-E-09
 Acq. Operator : ZJ_1432 Inj : 1
 Spec. Reported : MS Integration Inj Volume : 1 ul
 Acq. Method : D:\Chem32\1\data\2019\20191008\720\1-POS-3MIN.M
 Analysis Method : D:\CHEM32\1\DATA\2019\20191008\720\1-POS-3MIN.M
 Catalog No : HY-101128 Batch# 46645
 Method Info : Mobile Phase: A: water(0.01%TFA) B:ACN(0.01%TFA)
 Gradient: 5% to 95%B within 1.3 min
 Flow Rate :1.8ml/min
 Column :SunFire C18, 4.6*50mm,3.5um A-RP-433
 Oven Temperature : 45□

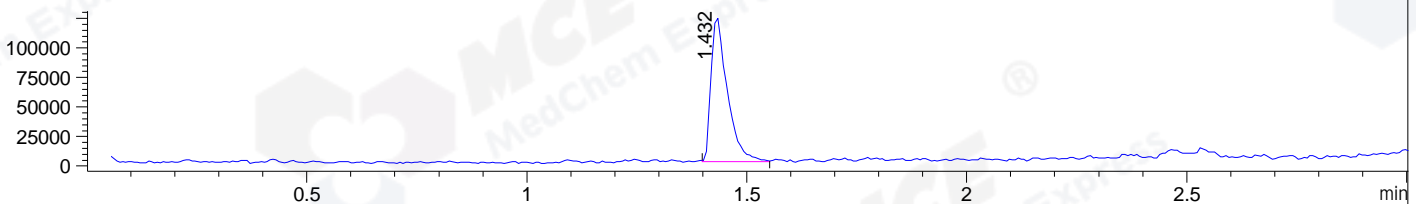
DAD1 B, Sig=214,4 Ref=off



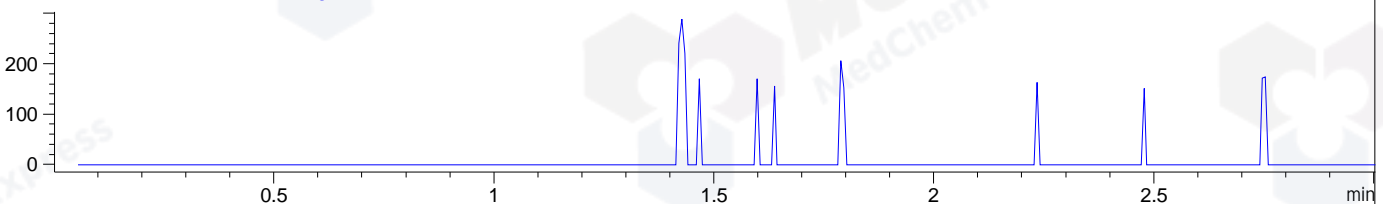
DAD1 C, Sig=254,4 Ref=off



MSD1 TIC, MS File ES-API, Pos, Scan, Frag: 70



Ion 407.14, MSD1 407.14, Target Mass 406.14 +H Positive, EIC=406.84:407.84



Integration Results for DAD1 B, Sig=214,4 Ref=off

RetTim	Width	Area	Height	Area%	MS (+)
1.42	0.02	711.02	517.78	99.85	211
1.94	0.02	1.04	1.02	0.15	135

Integration Results for DAD1 C, Sig=254,4 Ref=off

RetTim	Width	Area	Height	Area%	MS (+)
1.42	0.02	78.12	57.16	99.71	211
1.93	0.02	0.23	0.22	0.29	135

Integration Results for MSD1 TIC, MS File

RetTim	Width	Area	Height	Area%	MS (+)
1.43	0.04	314811.50	122712.91	100.00	211

Ret. Time: 1.43

<<<< POSITIVE SPECTRA >>>>

