

File ..\DATA\2019\20190312\563\BIZ2019-311-CXL10.D Tgt Mass (CHM):

Injection Date : 12 Mar 19 3:11 pm +0800 Seq. Line : 16

Sample Name : BIZ2019-311-CXL10 Location : P2-A-03

Acq. Operator : LQ_1052 Inj : 1

Spec. Reported : MS Integration Inj Volume : 1 ul

Acq. Method : D:\Chem32\1\data\2019\20190312\563\1-POS-3MIN-1.M

Analysis Method : D:\CHEM32\1\DATA\2019\20190312\563\1-POS-3MIN-1.M

Catalog No : HY-101140 Batch# 38843

Method Info : Mobile Phase: A: water(0.01%TFA) B:ACN(0.01%TFA)

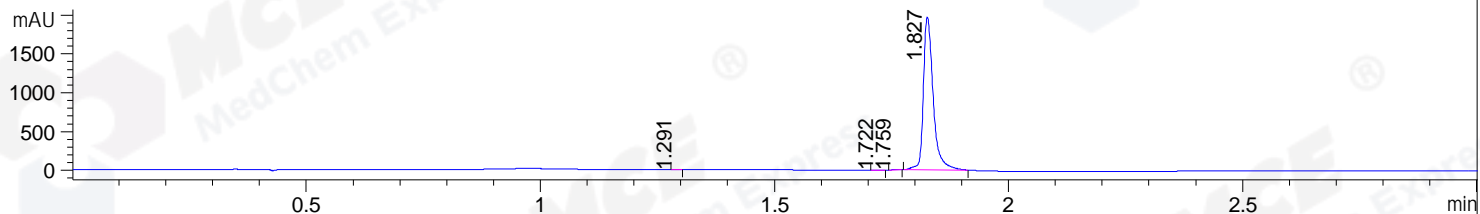
Gradient: 5% to 95%B within 1.3 min

Flow Rate :1.8ml/min

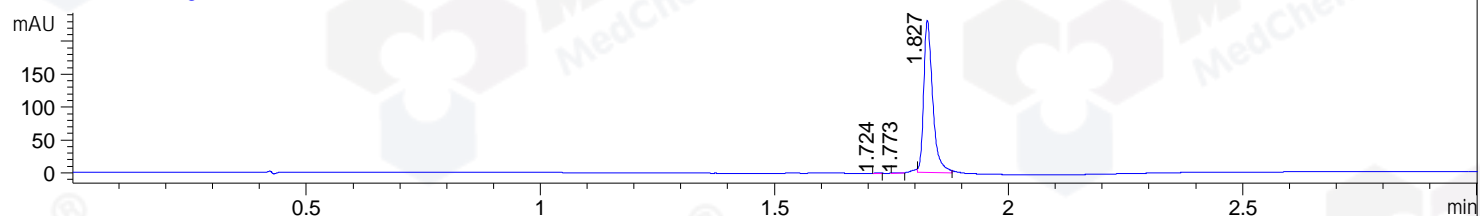
Column :SunFire C18, 4.6*50mm,3.5um A-RP-314

Oven Temperature : 45

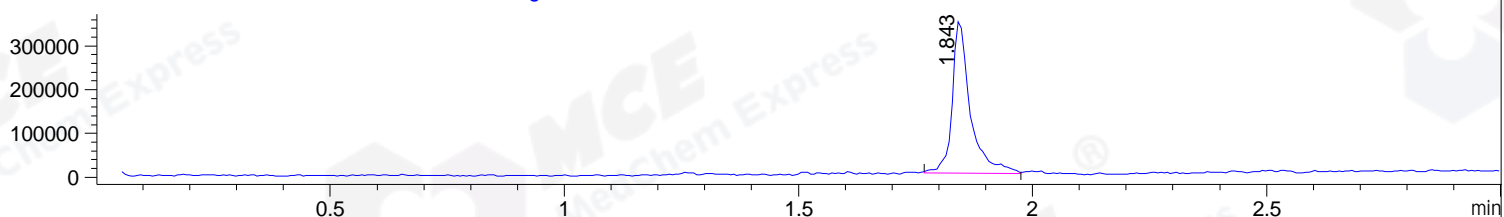
DAD1 B, Sig=214,4 Ref=off



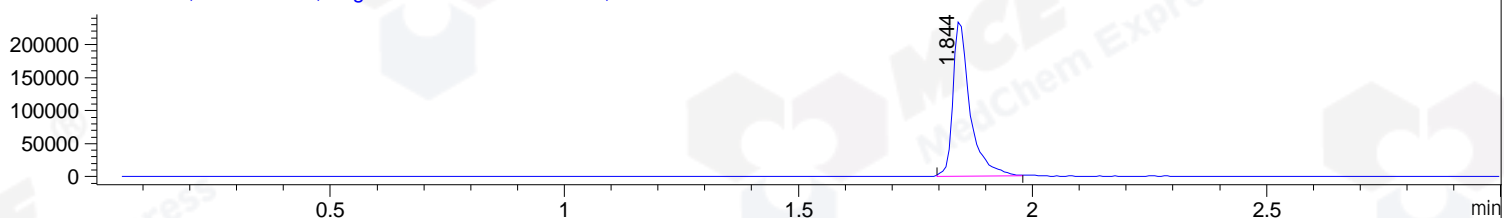
DAD1 C, Sig=254,4 Ref=off



MSD1 TIC, MS File ES-API, Pos, Scan, Frag: 70



Ion 551.2, MSD1 551.2, Target Mass 550.2 +H Positive, EIC=550.9:551.9



Integration Results for DAD1 B, Sig=214,4 Ref=off

RetTim	Width	Area	Height	Area%	MS (+)
1.29	0.02	1.77	1.65	0.06	ND
1.72	0.02	2.43	2.46	0.08	ND
1.76	0.02	3.97	4.28	0.14	623
1.83	0.02	2876.22	1970.27	99.72	551

Integration Results for DAD1 C, Sig=254,4 Ref=off

RetTim	Width	Area	Height	Area%	MS (+)
1.72	0.02	0.32	0.34	0.10	ND
1.77	0.04	0.60	0.27	0.20	623
1.83	0.02	307.38	230.93	99.70	551

Integration Results for MSD1 TIC, MS File

RetTim	Width	Area	Height	Area%	MS (+)
1.84	0.04	937901.75	350386.31	100.00	551

Ret. Time: 1.84

<<<< POSITIVE SPECTRA >>>>

ES-API Positive

