

L-689560

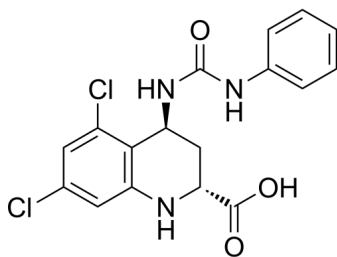
Cat. No.: HY-101178
Batch No.: 112102
CAS No.: 139051-78-8
Molecular Formula: C₁₇H₁₅Cl₂N₃O₃

ANALYTICAL DATA

Theoretical: C(53.70%)、H(3.98%)、N(11.05%)

Result: C(53.65%)、H(3.97%)、N(11.02%)

Chemical Structure:



Caution: Product has not been fully validated for medical applications. For research use only.

Tel: 609-228-6898

Fax: 609-228-5909

E-mail: tech@MedChemExpress.com

Address: 1 Deer Park Dr, Suite Q, Monmouth Junction, NJ 08852, USA