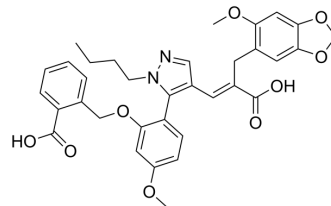


## SB234551

Cat. No.:	HY-101262
CAS No.:	188257-69-4
Molecular Formula:	C <sub>34</sub> H <sub>34</sub> N <sub>2</sub> O <sub>9</sub>
Molecular Weight:	614.64
Target:	Endothelin Receptor
Pathway:	GPCR/G Protein
Storage:	Please store the product under the recommended conditions in the Certificate of Analysis.



## BIOLOGICAL ACTIVITY

### Description

SB234551 is a selective endothelin ETA receptor antagonist. SB234551 can be used in the study of stroke model<sup>[1]</sup>.

## REFERENCES

[1]. Legos JJ, et al. SB 234551 selective ET(A) receptor antagonism: perfusion/diffusion MRI used to define treatable stroke model, time to treatment and mechanism of protection. *Exp Neurol*. 2008 Jul;212(1):53-62.

**Caution: Product has not been fully validated for medical applications. For research use only.**

Tel: 609-228-6898

Fax: 609-228-5909

E-mail: tech@MedChemExpress.com

Address: 1 Deer Park Dr, Suite Q, Monmouth Junction, NJ 08852, USA