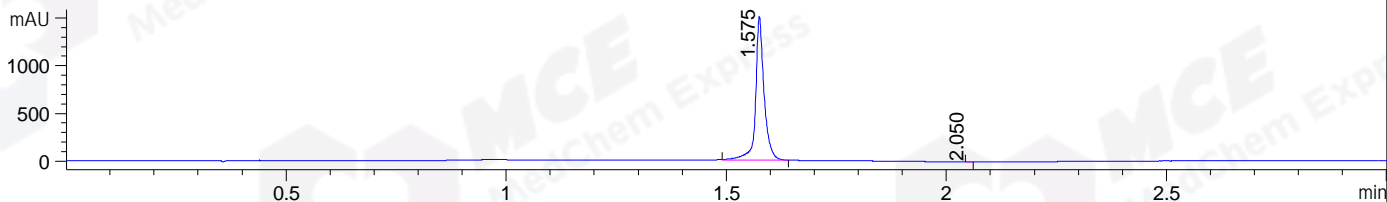
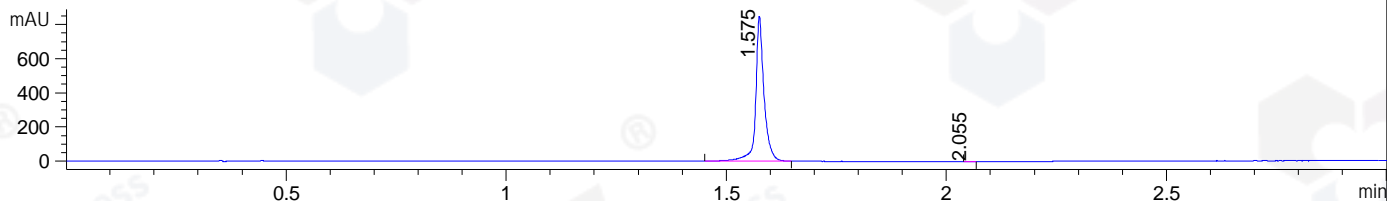


File ..\DATA\2019\20190909\722\CPK2019-909-24286.D Tgt Mass (CHM):  
Injection Date : 9 Sep 19 3:04 pm +0800 Seq. Line : 42  
Sample Name : CPK2019-909-24286 Location : P2-E-08  
Acq. Operator : LQ\_1052 Inj : 1  
Spec. Reported : MS Integration Inj Volume : 1 ul  
Acq. Method : D:\Chem32\1\data\2019\20190909\722\1-POS-3MIN.M  
Analysis Method : D:\CHEM32\1\DATA\2019\20190909\722\1-POS-3MIN.M  
Catalog No : HY-101296 Batch# 24286 BY MEOH A-RP-322  
Method Info : Mobile Phase: A: water(0.01%TFA) B:ACN(0.01%TFA)  
Gradient: 5% to 95%B within 1.3 min  
Flow Rate :1.8ml/min  
Column :SunFire C18, 4.6\*50mm,3.5um A-RP-433  
Oven Temperature : 45

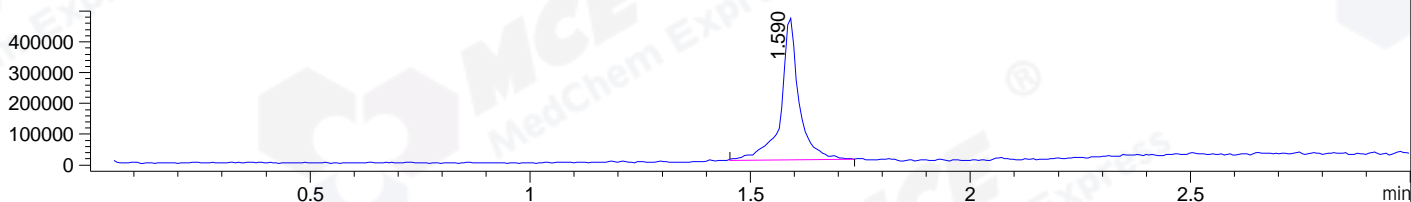
DAD1 B, Sig=214,4 Ref=off



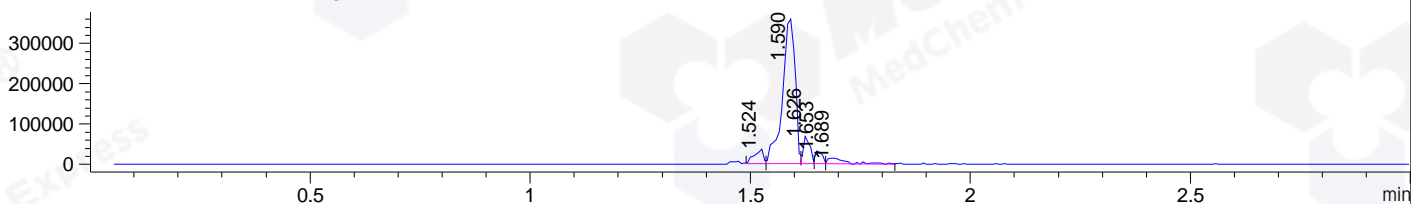
DAD1 C, Sig=254,4 Ref=off



MSD1 TIC, MS File ES-API, Pos, Scan, Frag: 70



Ion 397.5, MSD1 397.5, Target Mass 396.5 +H Positive, EIC=397.2:398.2



Integration Results for DAD1 B, Sig=214,4 Ref=off

RetTim	Width	Area	Height	Area%	MS (+)
1.58	0.02	2036.71	1507.87	99.97	397
2.05	0.01	0.61	0.82	0.03	141

Integration Results for DAD1 C, Sig=254,4 Ref=off

RetTim	Width	Area	Height	Area%	MS (+)
1.58	0.02	1123.45	849.68	99.95	397
2.06	0.01	0.54	0.58	0.05	141

Integration Results for MSD1 TIC, MS File

RetTim	Width	Area	Height	Area%	MS (+)
1.59	0.04	1322310.38	465657.25	100.00	397

Ret. Time: 1.59

<<<< POSITIVE SPECTRA >>>>

ES-API Positive

