

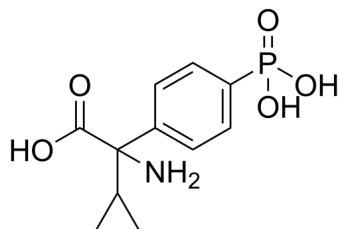
CPPG

Cat. No.: HY-101333
Batch No.: 274744
CAS No.: 183364-82-1
Molecular Formula: C₁₁H₁₄NO₅P

ANALYTICAL DATA

Theoretical: C(48.71%), H(5.20%), N(5.16%)
Result: C(48.37%), H(5.19%), N(5.34%)

Chemical Structure:



Caution: Product has not been fully validated for medical applications. For research use only.

Tel: 609-228-6898

Fax: 609-228-5909

E-mail: tech@MedChemExpress.com

Address: 1 Deer Park Dr, Suite Q, Monmouth Junction, NJ 08852, USA