

## SDMA-d6

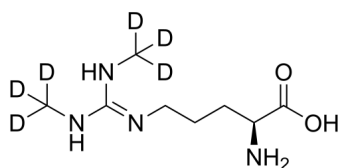
---

Cat. No.: HY-101410S  
Batch No.: 178681  
CAS No.: 1331888-08-4  
Molecular Formula: C<sub>8</sub>H<sub>12</sub>D<sub>6</sub>N<sub>4</sub>O<sub>2</sub>

### ANALYTICAL DATA

Theoretical: C(46.13%)、H(11.61%)、N(26.90%)  
Result: C(43.91%)、H(8.97%)、N(24.86%)

Chemical Structure:



**Caution: Product has not been fully validated for medical applications. For research use only.**

Tel: 609-228-6898

Fax: 609-228-5909

E-mail: [tech@MedChemExpress.com](mailto:tech@MedChemExpress.com)

Address: 1 Deer Park Dr, Suite Q, Monmouth Junction, NJ 08852, USA