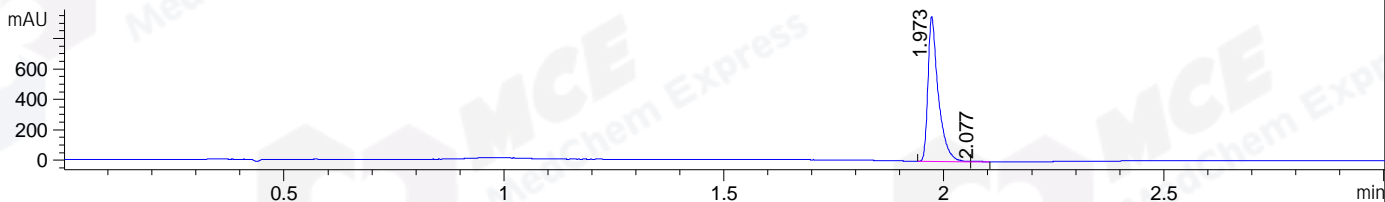
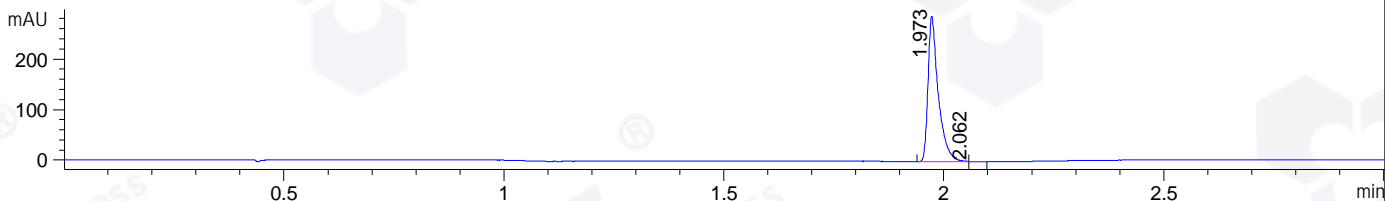


File ..\DATA\2019\20191205\784\CPK2019-D04-24039.D Tgt Mass (CHM):
 Injection Date : 5 Dec 19 5:55 pm +0800 Seq. Line : 115
 Sample Name : CPK2019-D04-24039 Location : P1-D-02
 Acq. Operator : ZJ_1432 Inj : 1
 Spec. Reported : MS Integration Inj Volume : 1 ul
 Acq. Method : D:\Chem32\1\data\2019\20191205\784\1-POS-3MIN.M
 Analysis Method : D:\CHEM32\1\DATA\2019\20191205\784\1-POS-3MIN.M
 Catalog No : HY-101426 Batch#24039
 Method Info : Mobile Phase: A: water(0.01%TFA) B:ACN(0.01%TFA)
 Gradient: 5% to 95%B within 1.3 min
 Flow Rate :1.8ml/min
 Column :SunFire C18, 4.6*50mm,3.5um A-RP-433
 Oven Temperature : 45

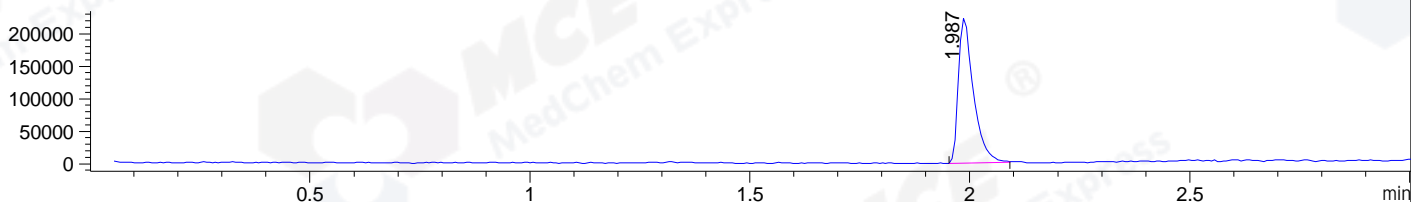
DAD1 B, Sig=214,4 Ref=off



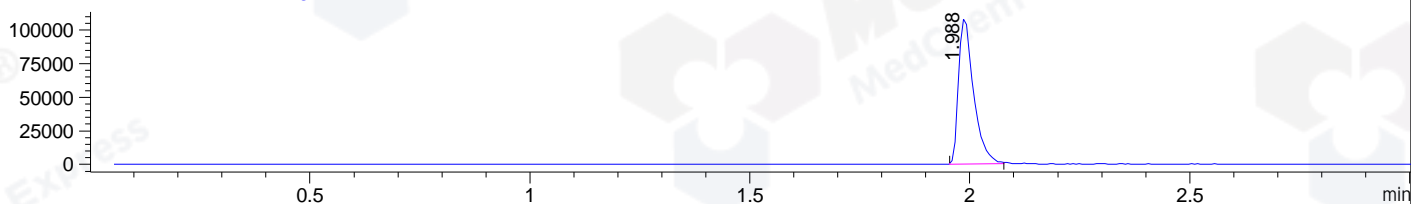
DAD1 C, Sig=254,4 Ref=off



MSD1 TIC, MS File ES-API, Pos, Scan, Frag: 70



Ion 275, MSD1 275, Target Mass 274 +H Positive, EIC=274.7:275.7



Integration Results for DAD1 B, Sig=214,4 Ref=off

RetTim	Width	Area	Height	Area%	MS (+)
1.97	0.03	1554.99	952.13	99.64	275
2.08	0.02	5.54	3.74	0.36	275

Integration Results for DAD1 C, Sig=254,4 Ref=off

RetTim	Width	Area	Height	Area%	MS (+)
1.97	0.03	468.90	287.98	99.85	275
2.06	0.02	0.70	0.55	0.15	275

Integration Results for MSD1 TIC, MS File

RetTim	Width	Area	Height	Area%	MS (+)
1.99	0.04	531652.75	223656.59	100.00	275

Ret. Time: 1.99

<<<< POSITIVE SPECTRA >>>>

ES-API Positive

