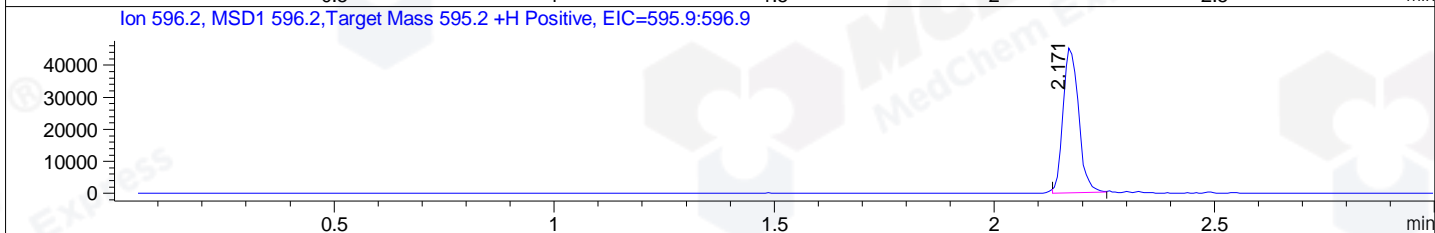
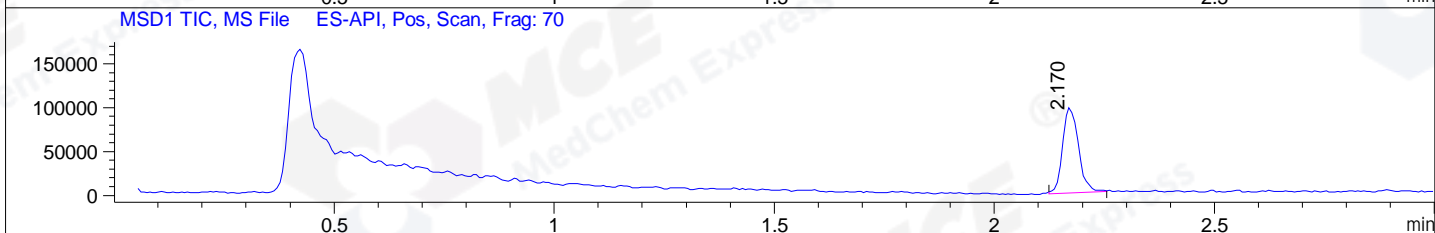
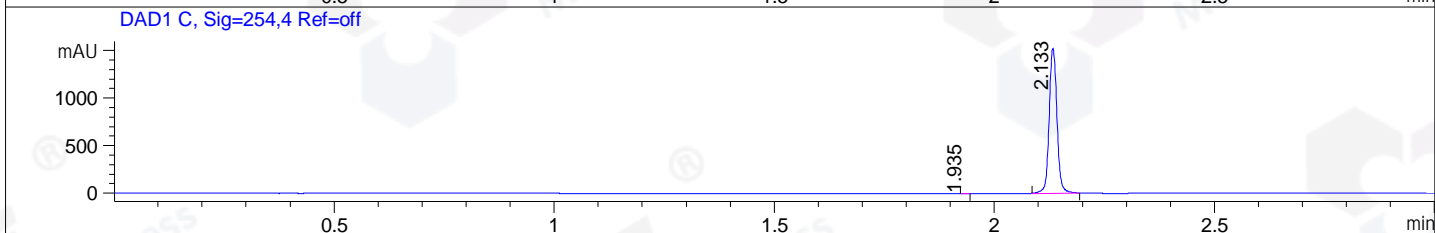
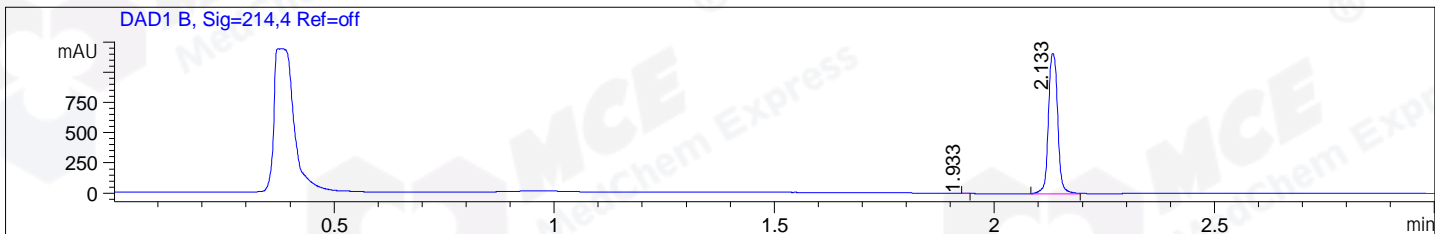


File ..1\DATA\2018\20190103\550\BIZ2019-102-CXL1.D Tgt Mass (CHM):
 Injection Date : 3 Jan 19 11:00 am +0800 Seq. Line : 21
 Sample Name : BIZ2019-102-CXL1 Location : P1-B-04
 Acq. Operator : LQ_1052 Inj : 1
 Spec. Reported : MS Integration Inj Volume : 1 ul
 Acq. Method : D:\Chem32\1\data\2018\20190103\550\1-POS-3MIN-1.M
 Analysis Method : D:\CHEM32\1\DATA\2018\20190103\550\1-POS-3MIN-1.M
 Catalog No : HY-101442 Batch#36449
 Method Info : Mobile Phase: A: water(0.01%TFA) B:ACN(0.01%TFA)
 Gradient: 5% to 95%B within 1.3 min
 Flow Rate :1.8ml/min
 Column :SunFire C18, 4.6*50mm,3.5um A-RP-314
 Oven Temperature : 45



Integration Results for DAD1 B, Sig=214,4 Ref=off

RetTim	Width	Area	Height	Area%	MS (+)
1.93	0.01	1.05	1.31	0.06	ND
2.13	0.02	1702.39	1162.32	99.94	596

Integration Results for DAD1 C, Sig=254,4 Ref=off

RetTim	Width	Area	Height	Area%	MS (+)
1.94	0.01	0.45	0.61	0.02	ND
2.13	0.02	1887.01	1524.51	99.98	596

Integration Results for MSD1 TIC, MS File

RetTim	Width	Area	Height	Area%	MS (+)
2.17	0.04	245059.22	97203.33	100.00	596

Ret. Time: 2.17

<<<< POSITIVE SPECTRA >>>>

ES-API Positive

