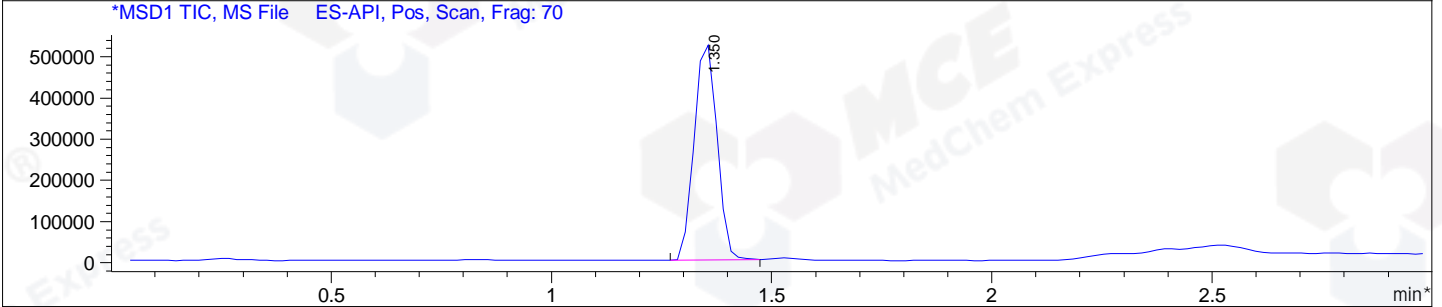
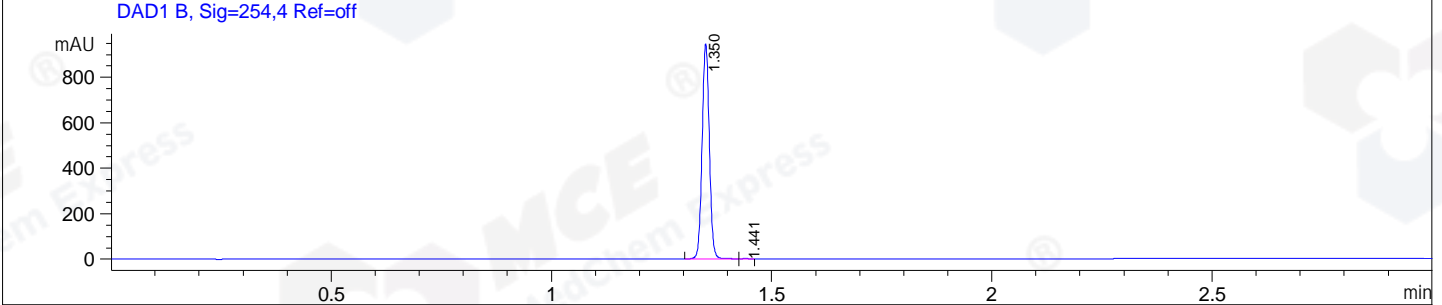
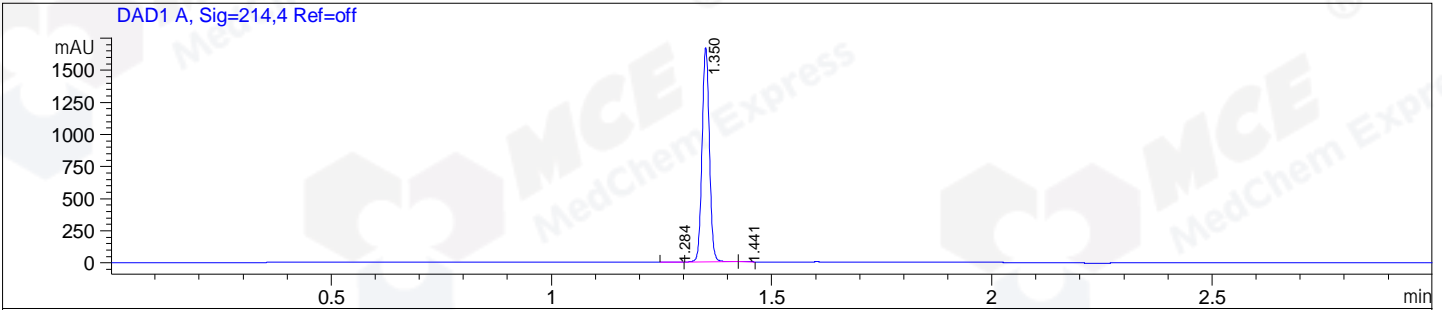


File E:\ChemStation\1\DATA\2024\2024-08\2024-08-13\BIZ2024-812-WLQ2-UPLC-MS-10-041764.D
 Injection Date : 13-Aug-24, 18:04:20 Tgt Mass(EZX) :
 Sample Name : BIZ2024-812-WLQ2 Location : P1-C-02
 Acq. Operator : LY_2278 Inj : 1
 Spec. Reported : MS Integration Inj Volume : 0.8 ul
 Acq. Method : E:\ChemStation\1\Methods\1-POS-UPLC3.0MIN(1.2)(150-1000).M
 Analysis Method : E:\CHEMSTATION\1\METHODS\1-POS-UPLC3.0MIN(1.2)(150-1000).M
 CAS NO. : 1691249-45-2 WalkUp method: '1-POS-3MIN' Project: BIZ2024
 Method Info : Mobile Phase: A: water(0.01%TFA) B:ACN(0.01%TFA)
 Gradient: 5% to 95%B within 2.0 min
 Flow Rate :1.2ml/min
 Column :Shim-pack Scepter C18-120, 3.0*33mm,3um
 Oven Temperature : 45C



Integration Results for DAD1 A, Sig=214,4 Ref=off

RetTim	Width	Area	Height	Area%
1.28	0.02	1.06	0.89	0.06
1.35	0.02	1928.41	1663.75	99.83
1.44	0.02	2.27	2.26	0.12

Integration Results for DAD1 B, Sig=254,4 Ref=off

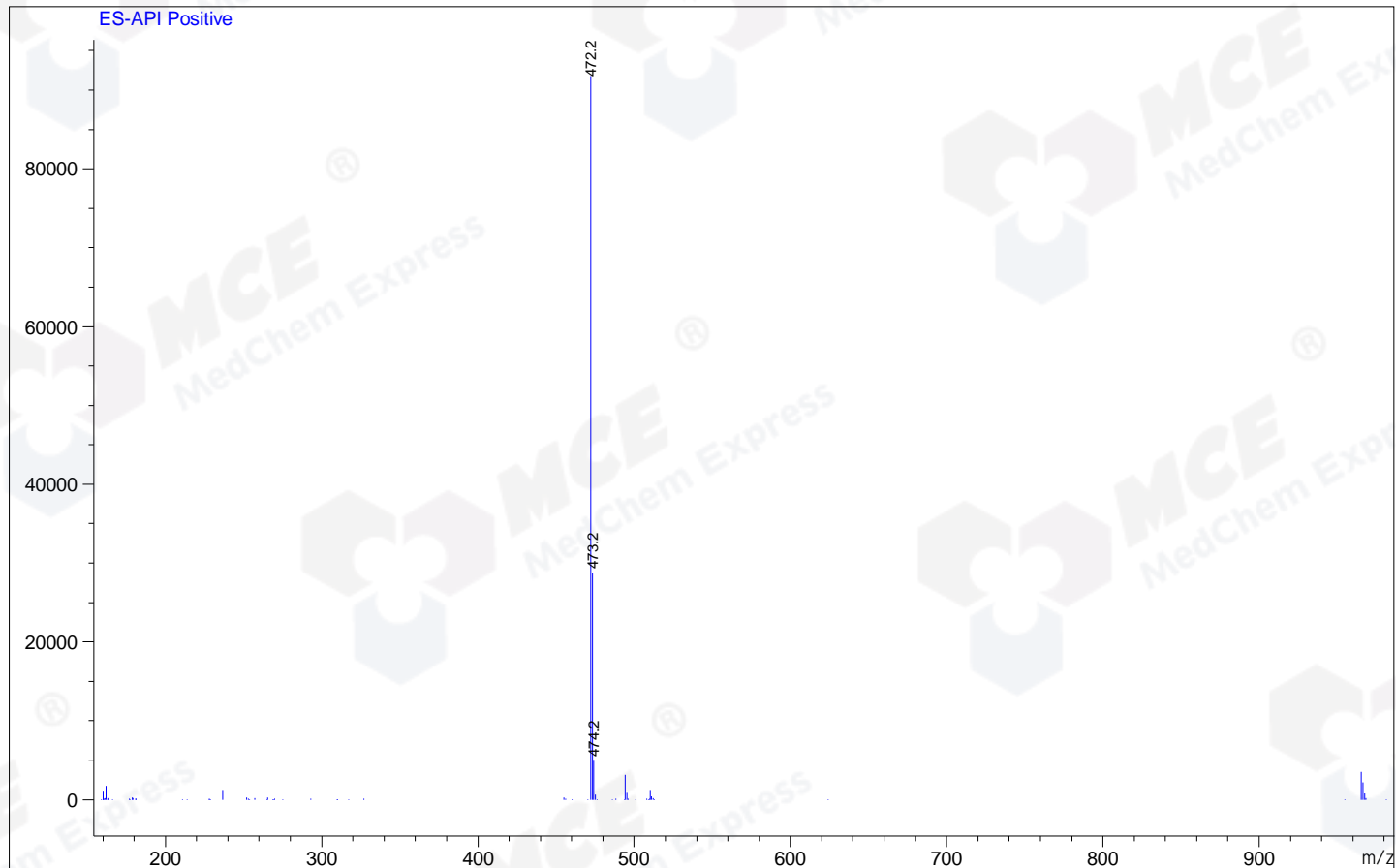
RetTim	Width	Area	Height	Area%
1.35	0.02	1075.71	942.57	99.92
1.44	0.02	0.89	0.91	0.08

Integration Results for MSD1 TIC, MS File

RetTim	Width	Area	Height	Area%
1.35	0.06	1885649.00	532357.69	100.00

Ret. Time: 1.35

<<<< POSITIVE SPECTRA >>>>



*** End of Report ***