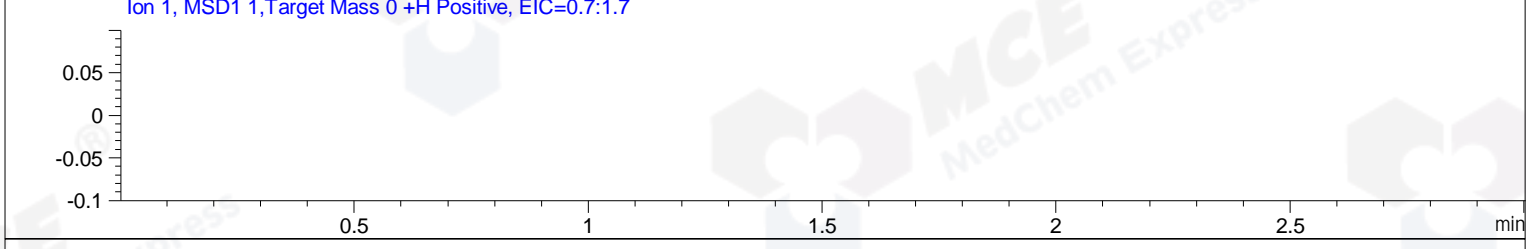
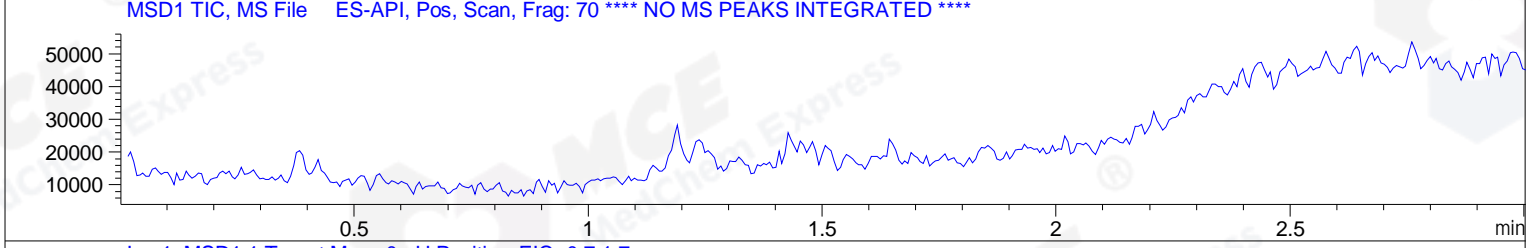
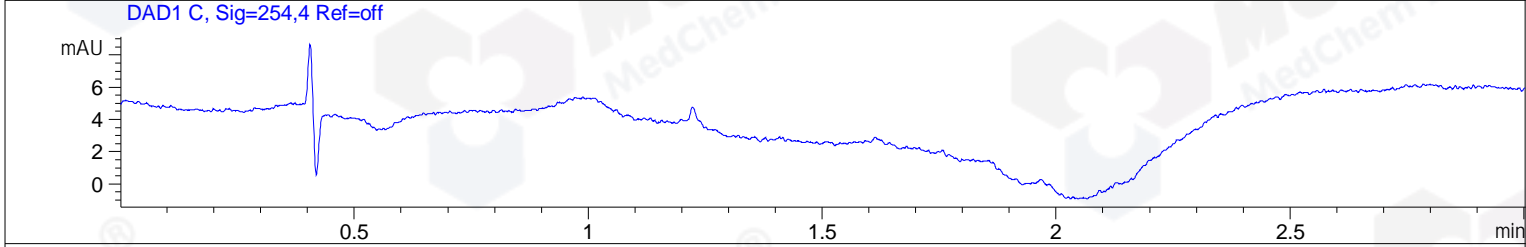
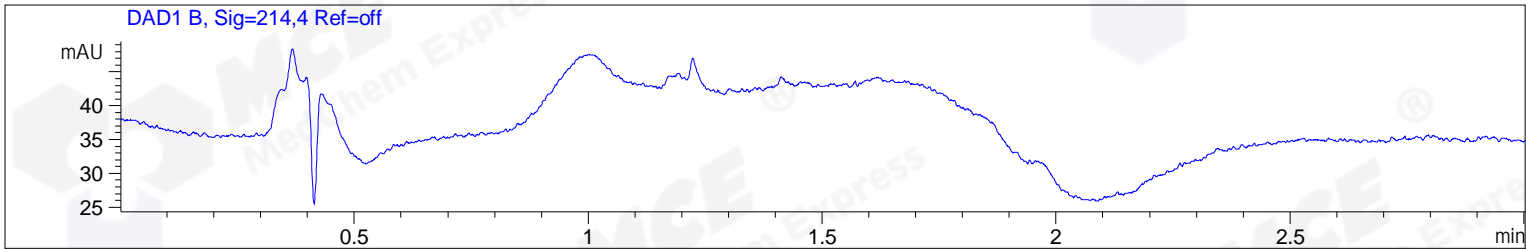


File D:\CHEM32\1\DATA\2019\20190903\715\BLANK--1.D Tgt Mass (CHM):
 Injection Date : 3 Sep 19 11:45 pm +0800 Seq. Line : 117
 Sample Name : BLANK Location : PL-F-07
 Acq. Operator : ZJ_1432 Inj : 1
 Spec. Reported : MS Integration Inj Volume : 1 ul
 Acq. Method : D:\Chem32\1\data\2019\20190903\715\1-POS-3MIN.M
 Analysis Method : D:\CHEM32\1\DATA\2019\20190903\715\1-POS-3MIN.M
 Catalog No : HY-101478 Batch#45312 BLANK
 Method Info : Mobile Phase: A: water(0.01%TFA) B:ACN(0.01%TFA)
 Gradient: 5% to 95%B within 1.3 min
 Flow Rate :1.8ml/min
 Column :SunFire C18, 4.6*50mm,3.5um A-RP-433
 Oven Temperature : 45



Integration Results for DAD1 B, Sig=214,4 Ref=off

RetTim	Width	Area	Height	Area%	MS (+)
-----	-----	-----	-----	-----	-----

Integration Results for DAD1 C, Sig=254,4 Ref=off

RetTim	Width	Area	Height	Area%	MS (+)
-----	-----	-----	-----	-----	-----

Integration Results for MSD1 TIC, MS File

RetTim	Width	Area	Height	Area%	MS (+)
-----	-----	-----	-----	-----	-----

File ..DATA\2019\20190903\715\BIZ2019-902-WSD31.D Tgt Mass (CHM):

Injection Date : 4 Sep 19 12:35 am +0800 Seq. Line : 127

Sample Name : BIZ2019-902-WSD31 Location : PL-B-04

Acq. Operator : ZJ_1432 Inj : 1

Spec. Reported : MS Integration Inj Volume : 0.5 ul

Acq. Method : D:\Chem32\1\data\2019\20190903\715\1-POS-3MIN.M

Analysis Method : D:\CHEM32\1\DATA\2019\20190903\715\1-POS-3MIN.M

Catalog No : HY-101478 Batch#45312

Method Info : Mobile Phase: A: water(0.01%TFA) B:ACN(0.01%TFA)

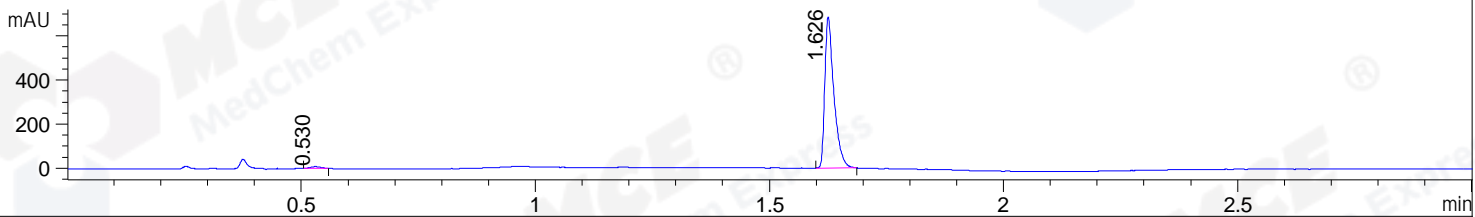
Gradient: 5% to 95%B within 1.3 min

Flow Rate :1.8ml/min

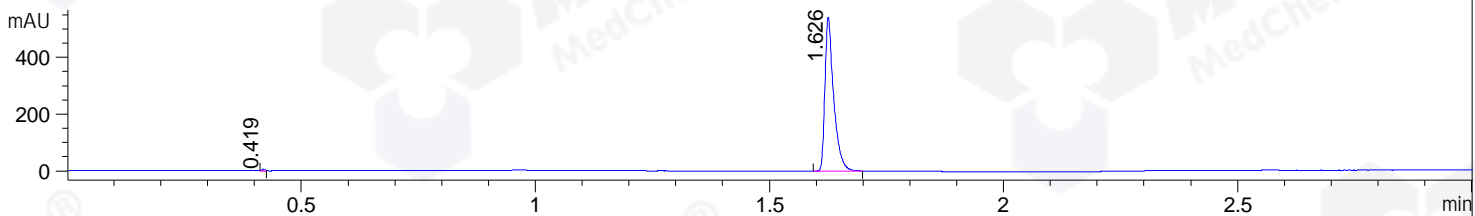
Column :SunFire C18, 4.6*50mm,3.5um A-RP-433

Oven Temperature : 45

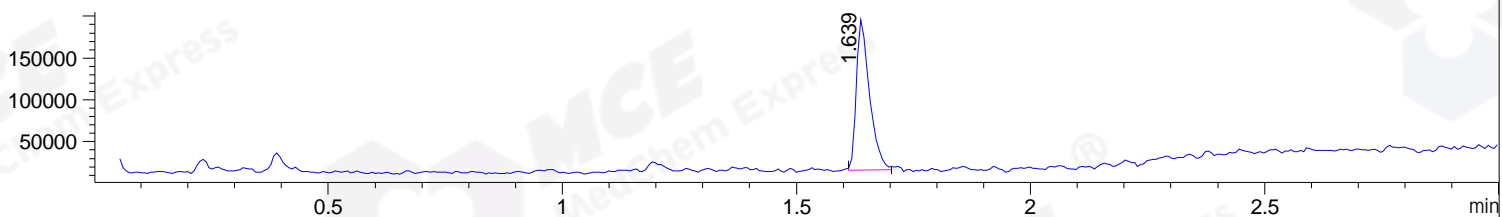
DAD1 B, Sig=214,4 Ref=off



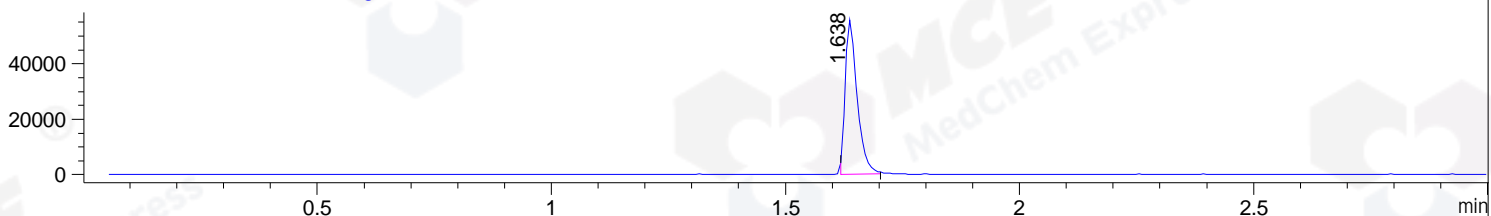
DAD1 C, Sig=254,4 Ref=off



MSD1 TIC, MS File ES-API, Pos, Scan, Frag: 70



Ion 267.06, MSD1 267.06, Target Mass 266.06 +H Positive, EIC=266.76:267.76



Integration Results for DAD1 B, Sig=214,4 Ref=off

RetTim	Width	Area	Height	Area%	MS (+)
0.53	0.03	13.85	8.49	1.47	157
1.63	0.02	925.96	686.27	98.53	267

Integration Results for DAD1 C, Sig=254,4 Ref=off

RetTim	Width	Area	Height	Area%	MS (+)
0.42	0.01	3.19	5.09	0.45	157
1.63	0.02	701.07	542.41	99.55	267

Integration Results for MSD1 TIC, MS File

RetTim	Width	Area	Height	Area%	MS (+)
1.64	0.03	352740.84	181219.73	100.00	267

Ret. Time: 1.64

<<<< POSITIVE SPECTRA >>>>

ES-API Positive

