

File ..1\DATA\2019\20190109\543\BIZ2019-108-CXL1.D Tgt Mass (CHM):

Injection Date : 9 Jan 19 11:11 am +0800 Seq. Line : 26

Sample Name : BIZ2019-108-CXL1 Location : P2-F-03

Acq. Operator : LQ_1052 Inj : 1

Spec. Reported : MS Integration Inj Volume : 1 ul

Acq. Method : D:\Chem32\1\data\2019\20190109\543\1-POS-3MIN-1.M

Analysis Method : D:\CHEM32\1\DATA\2019\20190109\543\1-POS-3MIN-1.M

Catalog No : HY-101488 Batch#36606 BY DMSO+MEOH

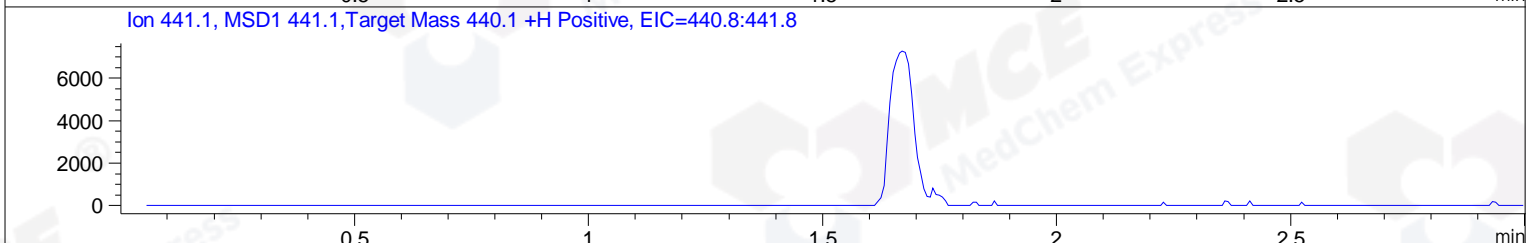
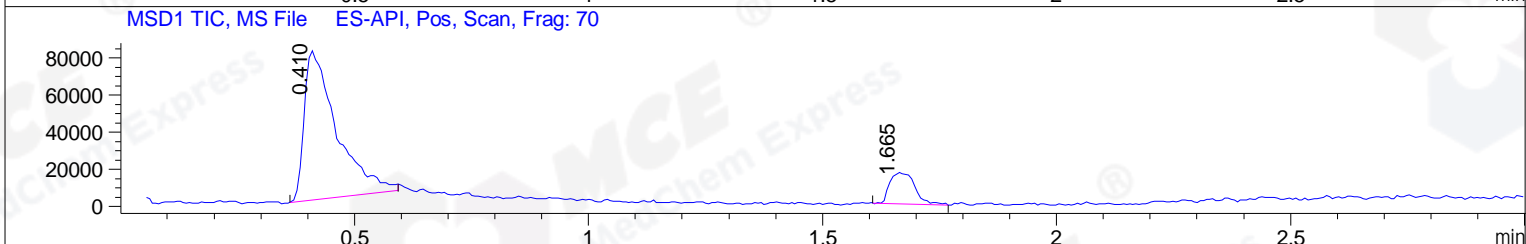
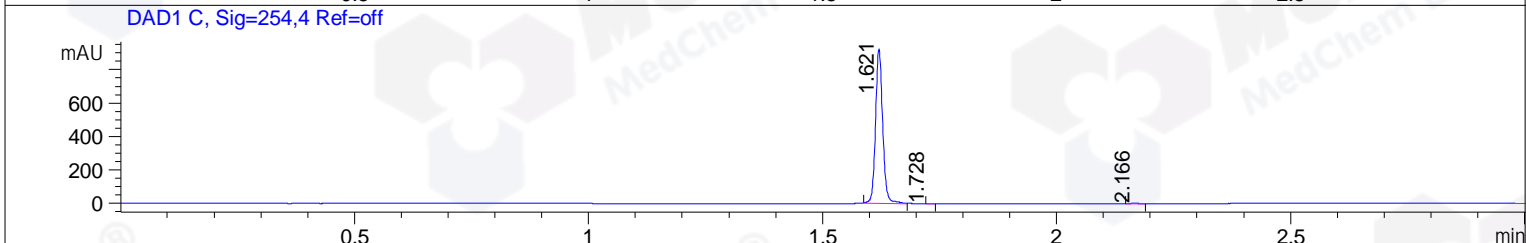
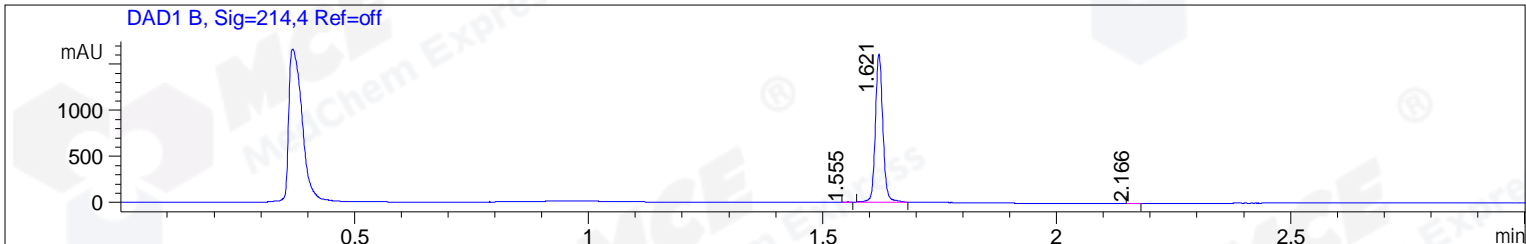
Method Info : Mobile Phase: A: water(0.01%TFA) B:ACN(0.01%TFA)

Gradient: 5% to 95%B within 1.3 min

Flow Rate :1.8ml/min

Column :SunFire C18, 4.6*50mm,3.5um A-RP-314

Oven Temperature : 45



Integration Results for DAD1 B, Sig=214,4 Ref=off

RetTim	Width	Area	Height	Area%	MS (+)
1.55	0.01	0.81	1.62	0.05	ND
1.62	0.02	1791.90	1605.11	99.78	441
2.17	0.02	3.15	3.15	0.18	ND

Integration Results for DAD1 C, Sig=254,4 Ref=off

RetTim	Width	Area	Height	Area%	MS (+)
1.62	0.02	988.20	924.19	99.62	441
1.73	0.01	0.31	0.36	0.03	ND
2.17	0.02	3.46	2.93	0.35	ND

Integration Results for MSD1 TIC, MS File

RetTim	Width	Area	Height	Area%	MS (+)
0.41	0.06	386482.00	80423.28	86.06	157
1.66	0.05	62617.30	16968.16	13.94	441

Ret. Time: 0.41

<<<< POSITIVE SPECTRA >>>>

ES-API Positive



Ret. Time: 1.66

ES-API Positive

