

File ..29-2 2018-01-29 13-11-47\BIZ2018-129-WYQ4.D Tgt Mass (CHM):

Injection Date : 29 Jan 18 4:26 pm +0800 Seq. Line : 25

Sample Name : BIZ2018-129-WYQ4 Location : P2-B-06

Acq. Operator : XLH_854 Inj : 1

Spec. Reported : MS Integration Inj Volume : 1 ul

Acq. Method : D:\chem32\1\DATA\20180129\20180129-2 2018-01-29 13-11-47\1-POS-3MIN-1.M

Analysis Method : D:\CHEM32\1\DATA\20180129\20180129-2 2018-01-29 13-11-47\1-POS-3MIN-1.M

Catalog No : HY-101510 Batch#28726

Method Info : Mobile Phase: A: water(0.01%TFA) B:ACN(0.01%TFA)

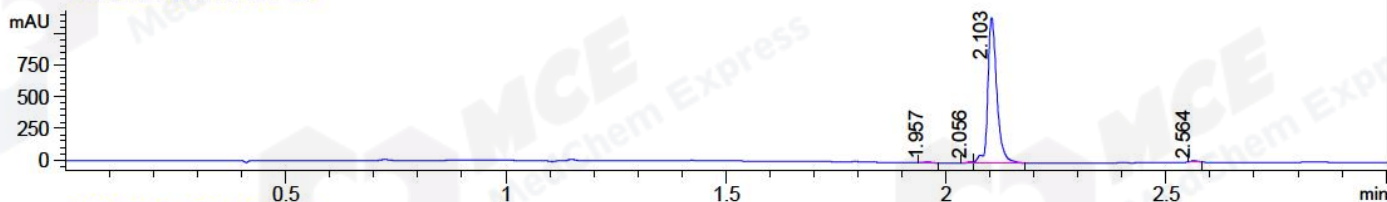
Gradient: 5% to 95%B within 1.3 min

Flow Rate :1.8ml/min

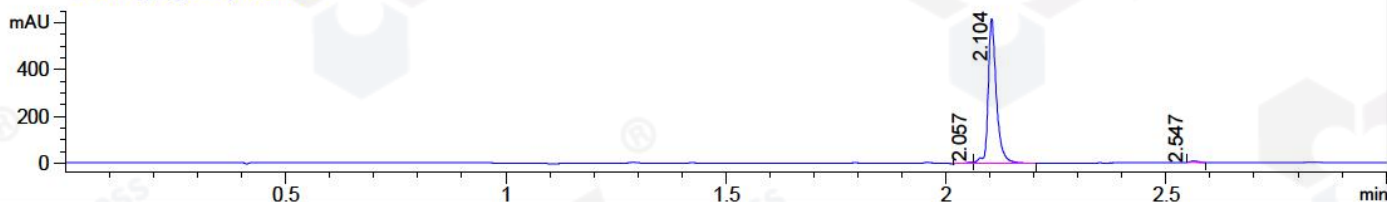
Column :SunFire C18, 4.6*50mm,3.5um A-RP-186

Oven Temperature : 45C

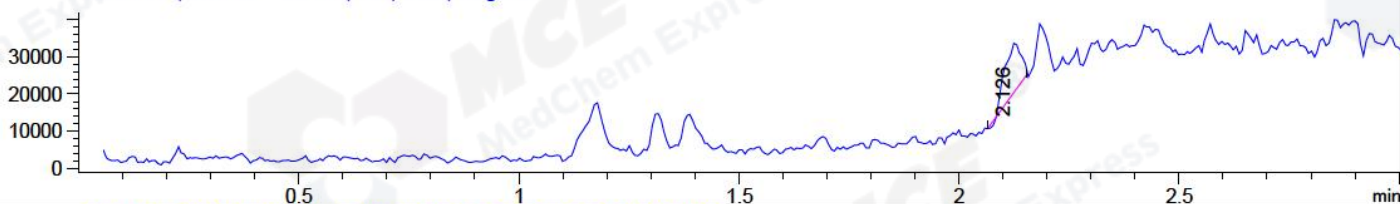
DAD1 B, Sig=214,4 Ref=off



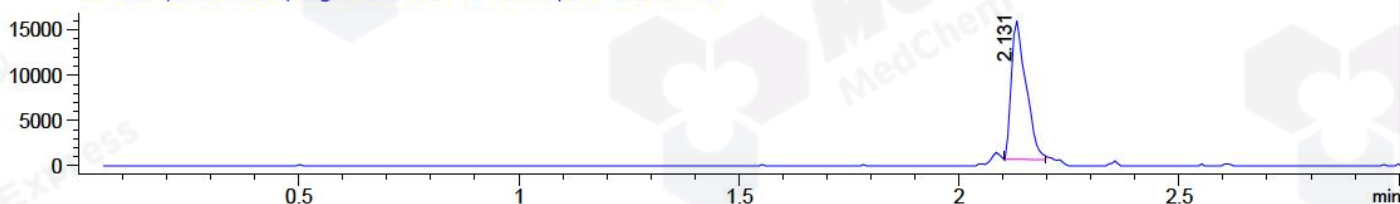
DAD1 C, Sig=254,4 Ref=off



MSD1 TIC, MS File ES-API, Pos, Scan, Frag: 70



Ion 485.1, MSD1 485.1, Target Mass 484.1 +H Positive, EIC=484.8:485.8



Integration Results for DAD1 B, Sig=214,4 Ref=off

RetTim	Width	Area	Height	Area%	MS (+)
1.96	0.02	10.17	8.68	0.60	141
2.06	0.02	9.74	11.49	0.58	141
2.10	0.02	1658.96	1152.46	98.28	485
2.56	0.02	9.05	8.16	0.54	159

Integration Results for DAD1 C, Sig=254,4 Ref=off

RetTim	Width	Area	Height	Area%	MS (+)
2.06	0.02	6.71	6.10	0.81	233
2.10	0.02	815.79	624.56	98.24	485
2.55	0.03	7.91	0.12	0.95	159

Integration Results for MSD1 TIC, MS File

RetTim	Width	Area	Height	Area%	MS (+)
2.13	0.04	35184.39	13980.04	100.00	485

Ret. Time: 2.13

<<<< POSITIVE SPECTRA >>>>

