

File ..ATA\2019\20190301\546\BIZ2019-225-CXL34-1.D Tgt Mass (CHM):

Injection Date : 1 Mar 19 12:08 pm +0800 Seq. Line : 31

Sample Name : BIZ2019-225-CXL34-1 Location : P2-C-01

Acq. Operator : LQ_1052 Inj : 1

Spec. Reported : MS Integration Inj Volume : 1 ul

Acq. Method : D:\Chem32\1\data\2019\20190301\546\1-POS-3MIN-1.M

Analysis Method : D:\CHEM32\1\DATA\2019\20190301\546\1-POS-3MIN-1.M

Catalog No : HY-101524 Batch#38538 BY DMSO

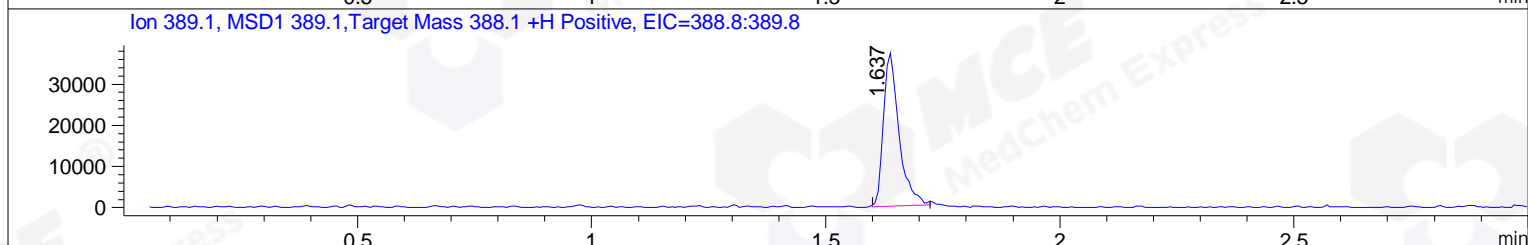
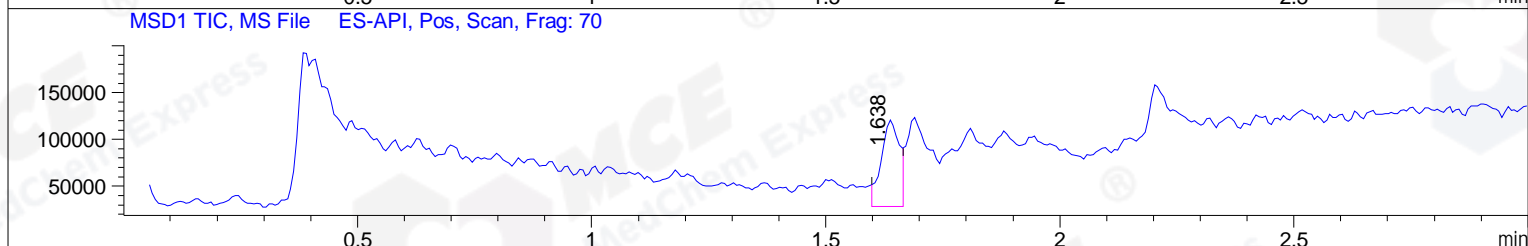
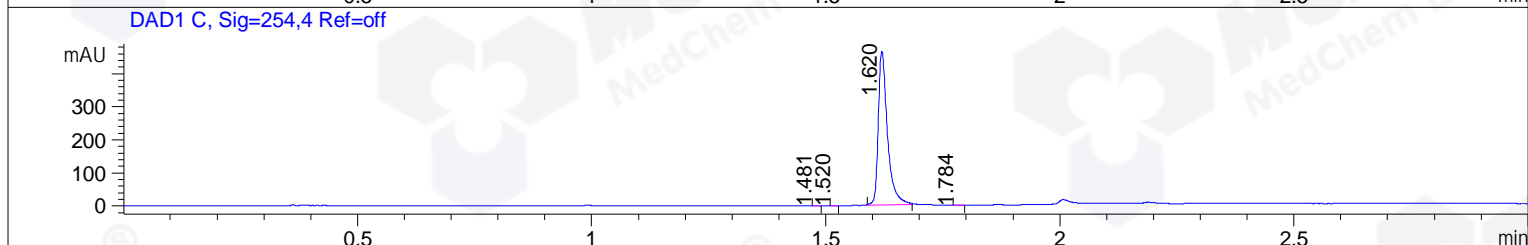
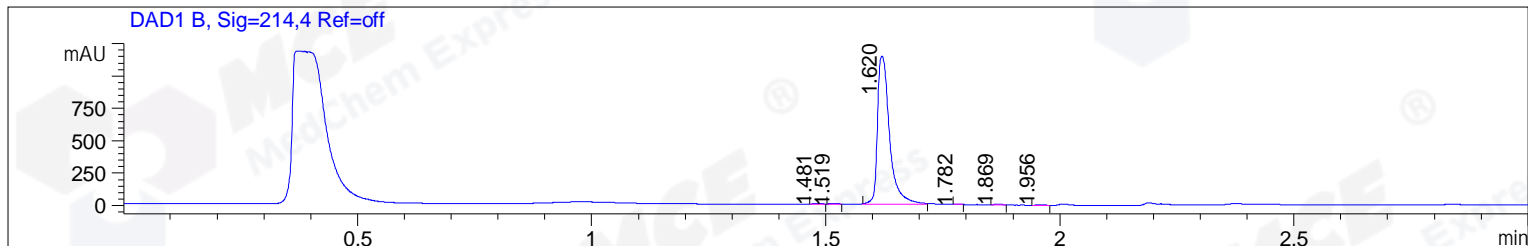
Method Info : Mobile Phase: A: water(0.01%TFA) B:ACN(0.01%TFA)

Gradient: 5% to 95%B within 1.3 min

Flow Rate :1.8ml/min

Column :SunFire C18, 4.6*50mm,3.5um A-RP-314

Oven Temperature : 45



Integration Results for DAD1 B, Sig=214,4 Ref=off

RetTim	Width	Area	Height	Area%	MS (+)
1.48	0.02	4.37	4.31	0.21	157
1.52	0.02	2.84	2.39	0.14	157
1.62	0.03	2037.30	1140.20	99.04	157
1.78	0.01	1.11	1.46	0.05	157
1.87	0.02	6.02	5.56	0.29	157
1.96	0.02	5.32	4.23	0.26	157

Integration Results for DAD1 C, Sig=254,4 Ref=off

RetTim	Width	Area	Height	Area%	MS (+)
1.48	0.01	0.38	0.59	0.06	157
1.52	0.01	0.37	0.49	0.06	157
1.62	0.02	638.24	465.82	99.77	389
1.78	0.02	0.73	0.80	0.11	157

Integration Results for MSD1 TIC, MS File

RetTim	Width	Area	Height	Area%	MS (+)
--------	-------	------	--------	-------	--------

1.64 0.04 248165.20 92746.93 100.00 389

Ret. Time: 1.64

<<<< POSITIVE SPECTRA >>>>

ES-API Positive

