

File ..-09\2024-09-14\HY-101562-LCMS-06-00136714.D Tgt Mass (EZX):

Injection Date : 14-Sep-24, 10:15:51 Seq. Line : 0

Sample Name : HY-101562 Location : P2-A-06

Acq. Operator : admin Inj : 1

Spec. Reported : MS Integration Inj Volume : 0.5 ul

Acq. Method : D:\chem\Methods\1-POS-C18-F1.8-1.4min C2.M

Analysis Method : D:\chem\Methods\1-POS-C18-F1.8-1.4min C2.M

CAS NO. : 2060571-02-8 WalkUp method: '1.4MIN' Target: Leader: W Project: HY-10

Method Info : Mobile Phase: A: water(0.01%TFA) B:ACN(0.01%TFA)

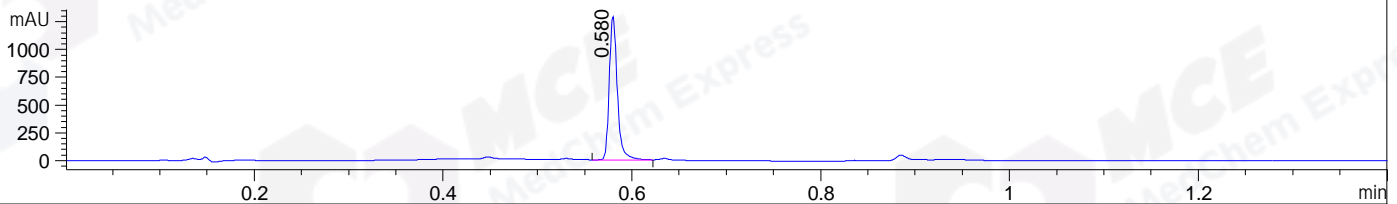
Gradient: 5% to 95%B within 0.5 min

Flow Rate :1.8ml/min

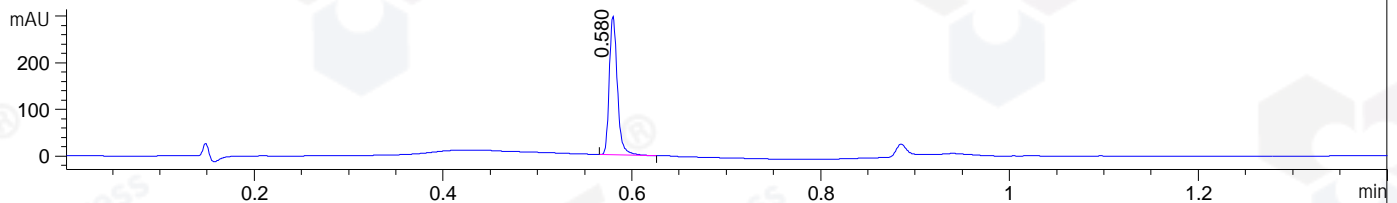
Column :Shim-pack Scepter C18-120_33x3mm_3µm A-RP-1525

Oven Temperature : 45C

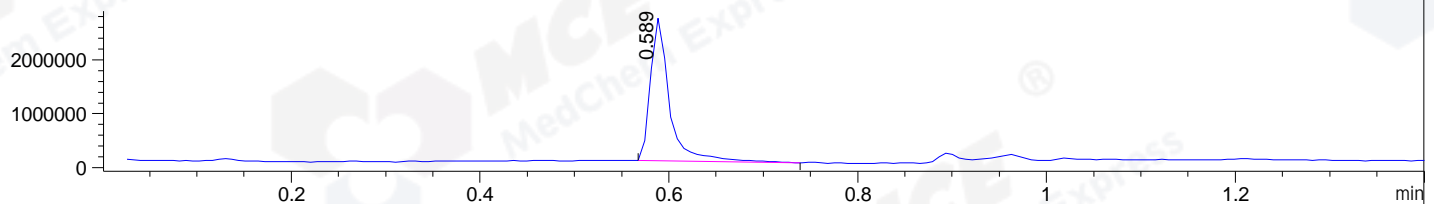
DAD1 A, Sig=214,4 Ref=off



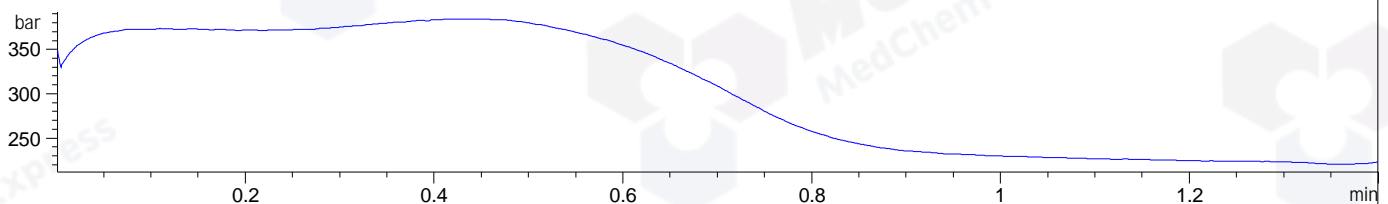
DAD1 B, Sig=254,4 Ref=off



MSD1 TIC, MS File ES-API, Pos, Scan, Frag: 135



PMP1, PMP1A, Pressure



Integration Results for DAD1 A, Sig=214,4 Ref=off

RetTim	Width	Area	Height	Area%	MS(+)
0.58	0.01	760.86	1279.90	100.00	130

Integration Results for DAD1 B, Sig=254,4 Ref=off

RetTim	Width	Area	Height	Area%	MS(+)
0.58	0.01	176.38	295.06	100.00	130

Integration Results for MSD1 TIC, MS File

RetTim	Width	Area	Height	Area%	MS(+)
0.59	0.02	3752762.25	2650323.75	100.00	408

Ret. Time: 0.59 <<<< POSITIVE SPECTRA >>>>

