

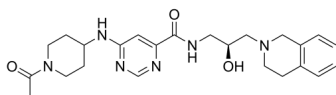
GSK3326595

Cat. No.: HY-101563
Batch No.: 274237
CAS No.: 1616392-22-3
Molecular Formula: C₂₄H₃₂N₆O₃

ANALYTICAL DATA

Theoretical: C(63.70%), H(7.13%), N(18.57%)
Result: C(63.965%), H(7.49%), N(18.605%)

Chemical Structure:



Caution: Product has not been fully validated for medical applications. For research use only.

Tel: 609-228-6898

Fax: 609-228-5909

E-mail: tech@MedChemExpress.com

Address: 1 Deer Park Dr, Suite Q, Monmouth Junction, NJ 08852, USA