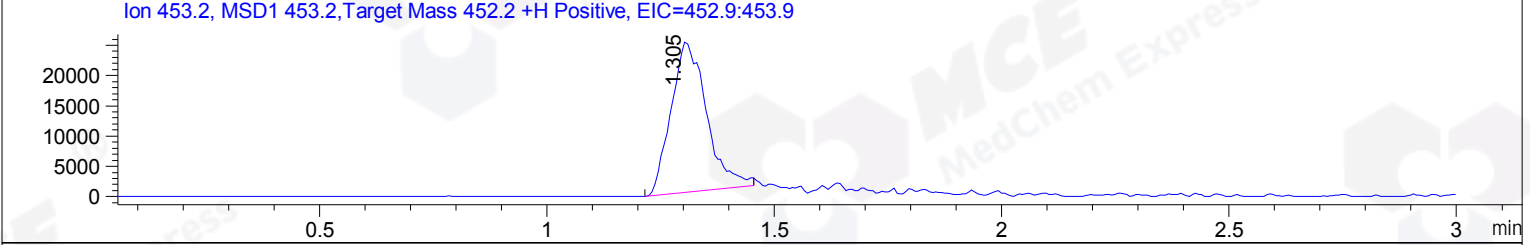
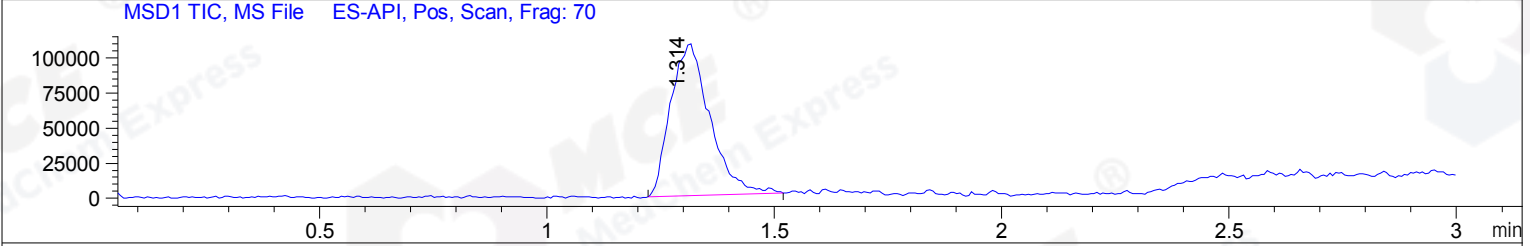
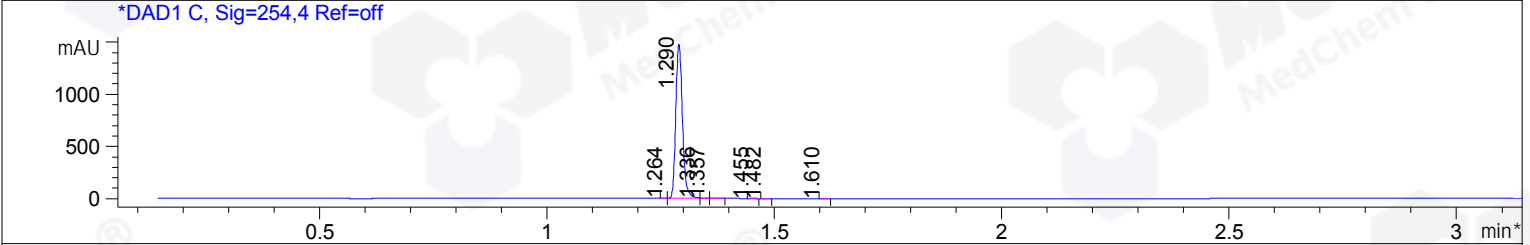
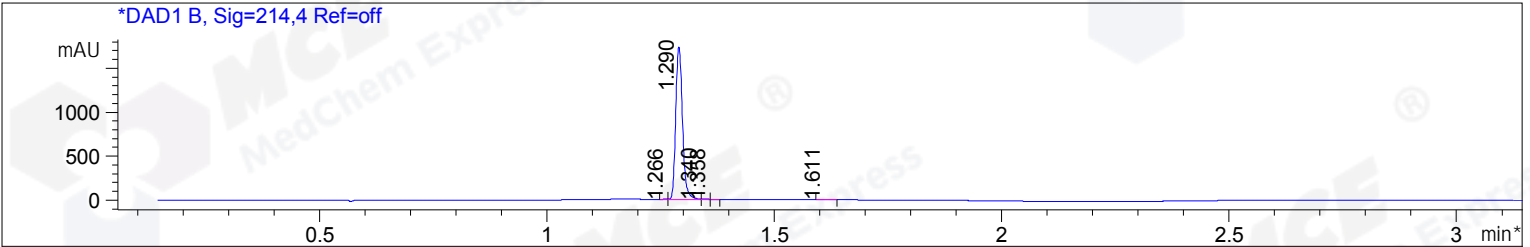


File ..HEM32\1\DATA\20170428\BIZ\BIZ2017-428-WJ7.D Tgt Mass (EZX): 452.20
 Injection Date : 28 Apr 17 1:22 pm +0800 Seq. Line : 0
 Sample Name : BIZ2017-428-WJ7 Location : P1-B-08
 Acq. Operator : GZZ_718 Inj : 1
 Spec. Reported : MS Integration Inj Volume : 1 ul
 Acq. Method : D:\Chem32\1\METHODS\1-POS-3MIN.M
 Analysis Method : D:\Chem32\1\METHODS\1-STANDBY.M
 Catalog No: HY-101563 Batch#24451 Easy-Access Method: '1-POS-3MIN' 452.20
 Method Info : Column: A-RP-169



Integration Results for DAD1 B, Sig=214,4 Ref=off

| RetTim | Width | Area | Height | Area% | MS (+) |
|--------|-------|---------|---------|-------|--------|
| 1.27 | 0.02 | 1.40 | 2.03 | 0.08 | 227 |
| 1.29 | 0.02 | 1789.38 | 1734.37 | 99.24 | 227 |
| 1.34 | 0.02 | 3.63 | 5.00 | 0.20 | 227 |
| 1.36 | 0.02 | 1.33 | 1.70 | 0.07 | 227 |
| 1.61 | 0.02 | 7.36 | 6.10 | 0.41 | 453 |

Integration Results for DAD1 C, Sig=254,4 Ref=off

| RetTim | Width | Area | Height | Area% | MS (+) |
|--------|-------|---------|---------|-------|--------|
| 1.26 | 0.04 | 0.93 | 1.65 | 0.06 | 227 |
| 1.29 | 0.02 | 1509.50 | 1479.95 | 99.47 | 227 |
| 1.34 | 0.02 | 4.34 | 5.46 | 0.29 | 227 |
| 1.36 | 0.02 | 1.74 | 1.64 | 0.11 | 227 |
| 1.46 | 0.02 | 0.32 | 0.36 | 0.02 | 453 |
| 1.48 | 0.02 | 0.30 | 0.34 | 0.02 | 453 |
| 1.61 | 0.02 | 0.37 | 0.44 | 0.02 | 227 |

Ret. Time: 1.31

<<<< POSITIVE SPECTRA >>>>

