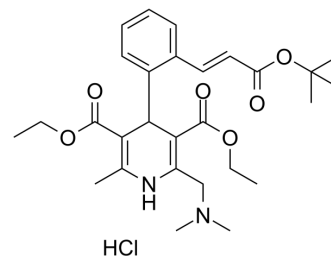


Teludipine hydrochloride

Cat. No.:	HY-101621
CAS No.:	108700-03-4
Molecular Formula:	C ₂₈ H ₃₉ ClN ₂ O ₆
Molecular Weight:	535.07
Target:	Calcium Channel
Pathway:	Membrane Transporter/Ion Channel; Neuronal Signaling
Storage:	Please store the product under the recommended conditions in the Certificate of Analysis.



BIOLOGICAL ACTIVITY

Description	Teludipine is a lipophilic calcium channel blocker.
IC₅₀ & Target	Calcium channel ^[1]
In Vitro	Teludipine is a lipophilic calcium channel blocker. Teludipine is a new dihydropyridine derivative on cell lines displaying the multidrug resistant phenotype ^[1] . MCE has not independently confirmed the accuracy of these methods. They are for reference only.

REFERENCES

[1]. Tolomeo M, et al. Effects of R-enantiomer (GR66234A) and L-enantiomer (GR66235A) of teludipine, a new dihydropyridine derivative, on cell lines displaying the multidrug resistant phenotype. *Haematologica*. 1994 Jul-Aug;79(4):328-33.

Caution: Product has not been fully validated for medical applications. For research use only.

Tel: 609-228-6898

Fax: 609-228-5909

E-mail: tech@MedChemExpress.com

Address: 1 Deer Park Dr, Suite Q, Monmouth Junction, NJ 08852, USA