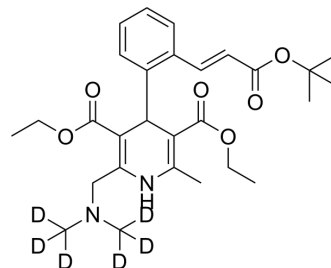


Teludipine-d₆

Cat. No.:	HY-101621S
CAS No.:	1246833-02-2
Molecular Formula:	C ₂₈ H ₃₂ D ₆ N ₂ O ₆
Molecular Weight:	504.65
Target:	Calcium Channel; Isotope-Labeled Compounds
Pathway:	Membrane Transporter/Ion Channel; Neuronal Signaling; Others
Storage:	Please store the product under the recommended conditions in the Certificate of Analysis.



BIOLOGICAL ACTIVITY

Description	Teludipine-d ₆ is the deuterium labeled Teludipine hydrochloride. Teludipine is a lipophilic calcium channel blocker[1][2].
In Vitro	Stable heavy isotopes of hydrogen, carbon, and other elements have been incorporated into drug molecules, largely as tracers for quantitation during the drug development process. Deuteration has gained attention because of its potential to affect the pharmacokinetic and metabolic profiles of drugs ^[1] . MCE has not independently confirmed the accuracy of these methods. They are for reference only.

REFERENCES

- [1]. Russak EM, et al. Impact of Deuterium Substitution on the Pharmacokinetics of Pharmaceuticals. *Ann Pharmacother*. 2019;53(2):211-216.
- [2]. Tolomeo M, et al. Effects of R-enantiomer (GR66234A) and L-enantiomer (GR66235A) of teludipine, a new dihydropyridine derivative, on cell lines displaying the multidrug resistant phenotype. *Haematologica*. 1994 Jul-Aug;79(4):328-33.

Caution: Product has not been fully validated for medical applications. For research use only.

Tel: 609-228-6898

Fax: 609-228-5909

E-mail: tech@MedChemExpress.com

Address: 1 Deer Park Dr, Suite Q, Monmouth Junction, NJ 08852, USA