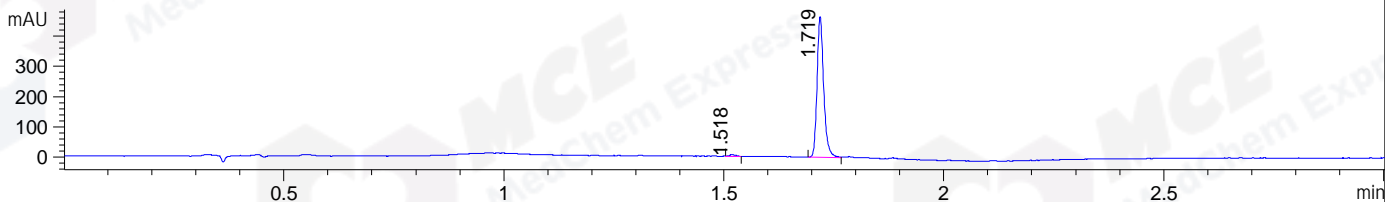
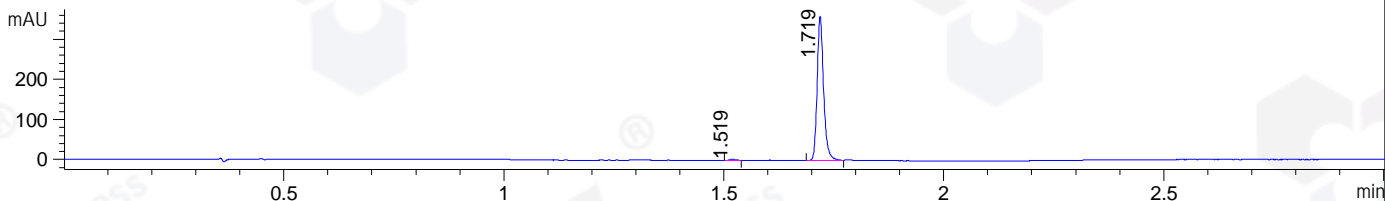


File ..1\DATA\2020\20200121\832\BIZ2020-121-CXL5.D Tgt Mass (CHM):
 Injection Date : 21 Jan 20 4:39 pm +0800 Seq. Line : 102
 Sample Name : BIZ2020-121-CXL5 Location : P1-D-07
 Acq. Operator : ZJ_1432 Inj : 1
 Spec. Reported : MS Integration Inj Volume : 1 ul
 Acq. Method : D:\Chem32\1\data\2020\20200121\832\1-POS-3MIN.M
 Analysis Method : D:\CHEM32\1\DATA\2020\20200121\832\1-POS-3MIN.M
 Catalog No : HY-101625 Batch#59435
 Method Info : Mobile Phase: A: water(0.01%TFA) B:ACN(0.01%TFA)
 Gradient: 5% to 95%B within 1.3 min
 Flow Rate :1.8ml/min
 Column :SunFire C18, 4.6*50mm,3.5um A-RP-433
 Oven Temperature : 45

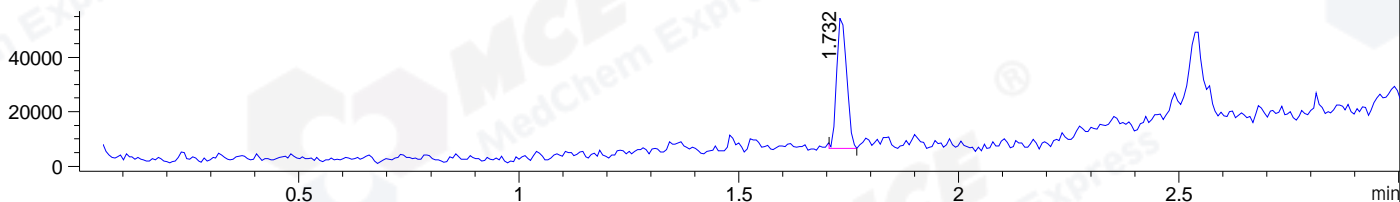
DAD1 B, Sig=214,4 Ref=off



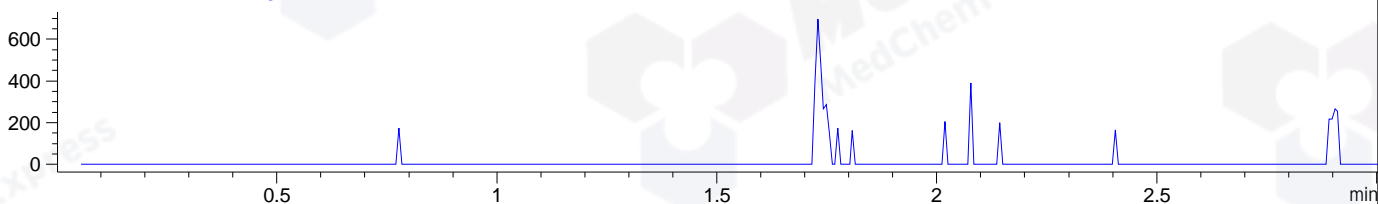
DAD1 C, Sig=254,4 Ref=off



MSD1 TIC, MS File ES-API, Pos, Scan, Frag: 70



Ion 337, MSD1 337, Target Mass 336 +H Positive, EIC=336.7:337.7



Integration Results for DAD1 B, Sig=214,4 Ref=off

RetTim	Width	Area	Height	Area%	MS (+)
1.52	0.01	5.21	5.22	1.06	ND
1.72	0.02	486.69	464.78	98.94	359

Integration Results for DAD1 C, Sig=254,4 Ref=off

RetTim	Width	Area	Height	Area%	MS (+)
1.52	0.01	2.14	2.42	0.58	ND
1.72	0.02	367.05	359.78	99.42	359

Integration Results for MSD1 TIC, MS File

RetTim	Width	Area	Height	Area%	MS (+)
1.73	0.03	75523.10	49243.04	100.00	359

Ret. Time: 1.73

<<<< POSITIVE SPECTRA >>>>

ES-API Positive

