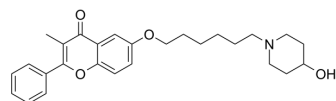


## Sigma-LIGAND-1

Cat. No.:	HY-101626		
CAS No.:	139652-01-0		
Molecular Formula:	C <sub>27</sub> H <sub>33</sub> NO <sub>4</sub>		
Molecular Weight:	435.56		
Target:	Sigma Receptor		
Pathway:	Neuronal Signaling		
Storage:	Powder	-20°C	3 years
		4°C	2 years
	In solvent	-80°C	6 months
		-20°C	1 month



### SOLVENT & SOLUBILITY

#### In Vitro

DMSO : 100 mg/mL (229.59 mM; Need ultrasonic)

Concentration	Mass		
	1 mg	5 mg	10 mg
1 mM	2.2959 mL	11.4795 mL	22.9590 mL
5 mM	0.4592 mL	2.2959 mL	4.5918 mL
10 mM	0.2296 mL	1.1479 mL	2.2959 mL

Please refer to the solubility information to select the appropriate solvent.

### BIOLOGICAL ACTIVITY

#### Description

Sigma-LIGAND-1 is a selective sigma receptor ligand with an IC<sub>50</sub>s of 16 nM, 19 nM at the DTG site and the PPP site, respectively. Sigma-LIGAND-1 has a K<sub>i</sub> of 4000 nM at the dopamine D<sub>2</sub> receptor<sup>[1]</sup>.

#### IC<sub>50</sub> & Target

IC<sub>50</sub>: 16 nM (DTG site of sigma receptor), 19 nM (PPP site of sigma receptor)<sup>[1]</sup>

K<sub>i</sub>: 4000 nM (Dopamine D<sub>2</sub> receptor)<sup>[1]</sup>

#### In Vivo

Administration of Sigma-LIGAND-1 would reverse amphetamine-induced hyperlocomotion in mice, a behavioral model sensitive to antipsychotic compounds. Sigma-LIGAND-1 and its structural analogues have the potential antipsychotic activity<sup>[1]</sup>.

MCE has not independently confirmed the accuracy of these methods. They are for reference only.

### REFERENCES

**Caution: Product has not been fully validated for medical applications. For research use only.**

Tel: 609-228-6898

Fax: 609-228-5909

E-mail: [tech@MedChemExpress.com](mailto:tech@MedChemExpress.com)

Address: 1 Deer Park Dr, Suite Q, Monmouth Junction, NJ 08852, USA