

File ..DATA\2020\20200730\1058\CPK2020-730-27058.D Tgt Mass (CHM):

Injection Date : 30 Jul 20 4:16 pm +0800 Seq. Line : 87

Sample Name : CPK2020-730-27058 Location : PL-B-07

Acq. Operator : ZJ\_1432 Inj : 1

Spec. Reported : MS Integration Inj Volume : 1 ul

Acq. Method : D:\Chem32\1\data\2020\20200730\1058\1-POS-3MIN.M

Analysis Method : D:\CHEM32\1\DATA\2020\20200730\1058\1-POS-3MIN.M

Catalog No : HY-101762

Method Info : Mobile Phase: A: water(0.01%TFA) B:ACN(0.01%TFA)

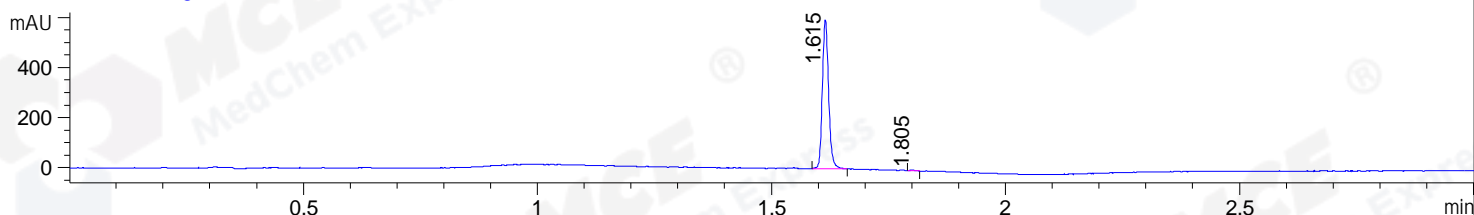
Gradient: 5% to 95%B within 1.3 min

Flow Rate :1.8ml/min

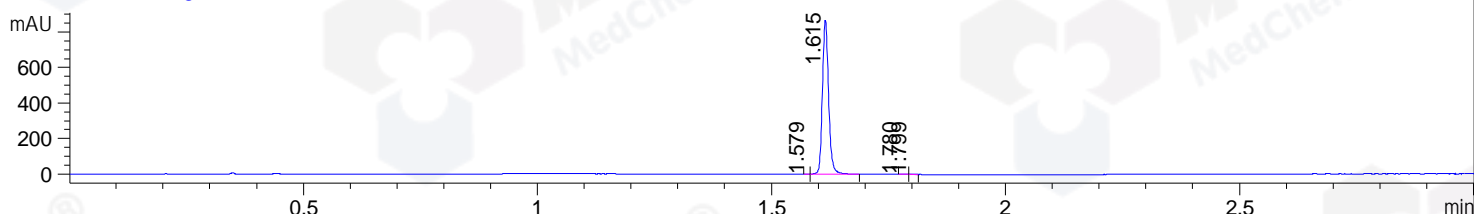
Column :SunFire C18, 4.6\*50mm,3.5um A-RP-314

Oven Temperature : 45C

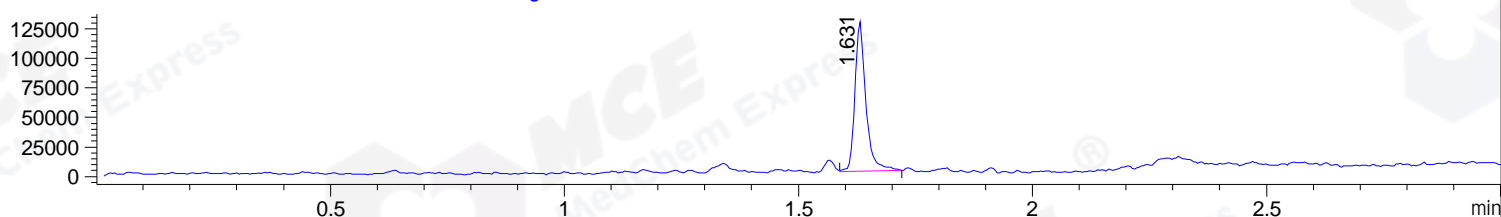
DAD1 B, Sig=214,4 Ref=off



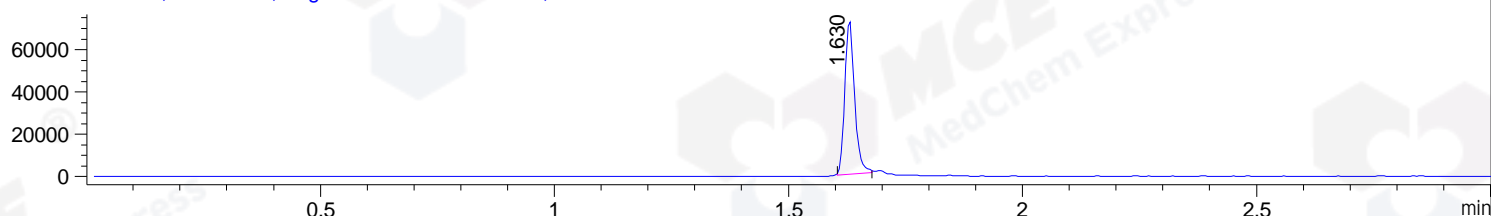
DAD1 C, Sig=254,4 Ref=off



MSD1 TIC, MS File ES-API, Pos, Scan, Frag: 70



Ion 311, MSD1 311, Target Mass 310 +H Positive, EIC=310.7:311.7



## Integration Results for DAD1 B, Sig=214,4 Ref=off

| RetTim | Width | Area   | Height | Area% | MS (+) |
|--------|-------|--------|--------|-------|--------|
| 1.62   | 0.02  | 553.70 | 596.27 | 99.71 | 311    |
| 1.80   | 0.01  | 1.61   | 1.81   | 0.29  | ND     |

## Integration Results for DAD1 C, Sig=254,4 Ref=off

| RetTim | Width | Area   | Height | Area% | MS (+) |
|--------|-------|--------|--------|-------|--------|
| 1.58   | 0.01  | 0.66   | 1.16   | 0.08  | 213    |
| 1.62   | 0.02  | 797.99 | 870.06 | 99.58 | 311    |
| 1.78   | 0.01  | 1.42   | 1.58   | 0.18  | ND     |
| 1.80   | 0.01  | 1.27   | 1.47   | 0.16  | 453    |

## Integration Results for MSD1 TIC, MS File

| RetTim | Width | Area      | Height    | Area%  | MS (+) |
|--------|-------|-----------|-----------|--------|--------|
| 1.63   | 0.02  | 207730.94 | 127435.38 | 100.00 | 311    |

Ret. Time: 1.63

<<<< POSITIVE SPECTRA >>>>

ES-API Positive

