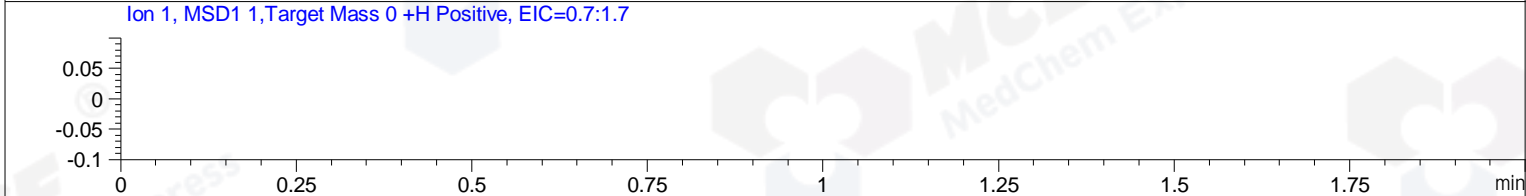
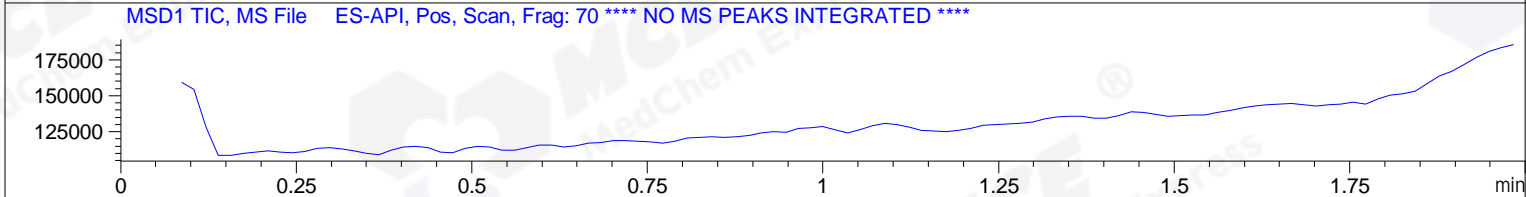
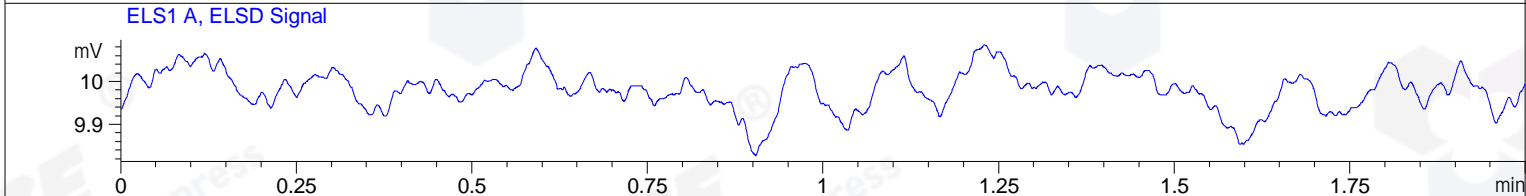
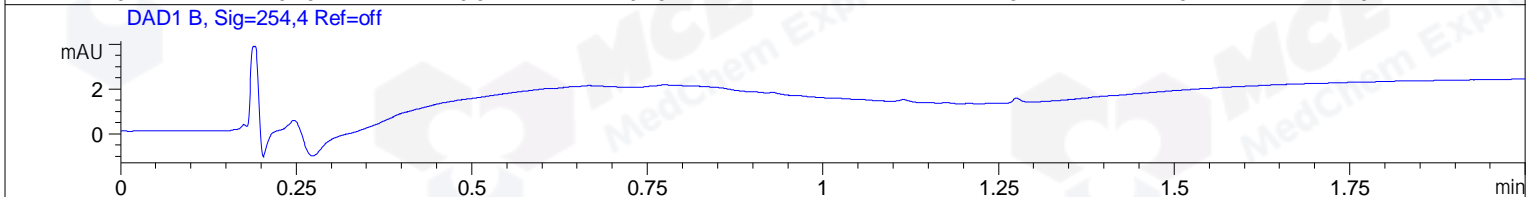
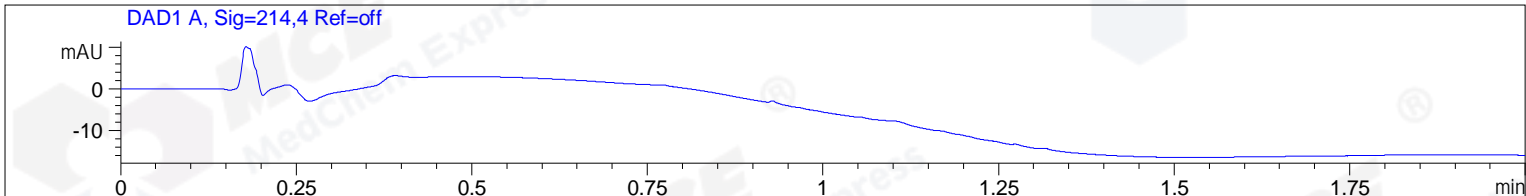


File ..0213 2020-02-13 10-07-07\TJJ7413-002-10\_0.D Tgt Mass (CHM):  
 Injection Date : 13 Feb 20 10:16 am +0800 Seq. Line : 3  
 Sample Name : TJJ7413-002-10\_0 Location : P1-E-01  
 Acq. Operator : SYSTEM Inj : 1  
 Spec. Reported : MS Integration Inj Volume : 0.2 ul  
 Acq. Method : D:\LCMS03\Data\20200213\20200213 2020-02-13 10-07-07\1-POS-UPLC2.0MIN(0.8ML)  
 Analysis Method : D:\LCMS03\Data\20200213\20200213 2020-02-13 10-07-07\1-POS-UPLC2.0MIN(0.8ML)  
 Catalog No : HY-10180 Batch# 59702  
 Method Info : Mobile Phase: A: water(0.01%TFA) B:ACN(0.01%TFA)  
 Gradient: 5% to 95%B within 0.6 min  
 Flow Rate :0.8ml/min  
 Column :Poroshell 120 EC- C18, 2.1\*50mm,1.9um A-RP-463  
 Oven Temperature : 45C



Integration Results for DAD1 A, Sig=214,4 Ref=off

RetTim	Width	Area	Height	Area%	MS (+)
-----	-----	-----	-----	-----	-----

Integration Results for DAD1 B, Sig=254,4 Ref=off

RetTim	Width	Area	Height	Area%	MS (+)
-----	-----	-----	-----	-----	-----

Integration Results for ELS1 A, ELSD Signal

RetTim	Width	Area	Height	Area%	MS (+)
-----	-----	-----	-----	-----	-----

Integration Results for MSD1 TIC, MS File

RetTim	Width	Area	Height	Area%	MS (+)
-----	-----	-----	-----	-----	-----

File ..200213 2020-02-13 10-07-07\TJJ7413-002-10.D Tgt Mass (CHM):

Injection Date : 13 Feb 20 10:19 am +0800 Seq. Line : 4

Sample Name : TJJ7413-002-10 Location : P1-E-02

Acq. Operator : SYSTEM Inj : 1

Spec. Reported : MS Integration Inj Volume : 0.2 ul

Acq. Method : D:\LCMS03\Data\20200213\20200213 2020-02-13 10-07-07\1-POS-UPLC2.0MIN(0.8ML)

Analysis Method : D:\LCMS03\Data\20200213\20200213 2020-02-13 10-07-07\1-POS-UPLC2.0MIN(0.8ML)

Catalog No : HY-10180 Batch# 59702

Method Info : Mobile Phase: A: water(0.01%TFA) B:ACN(0.01%TFA)

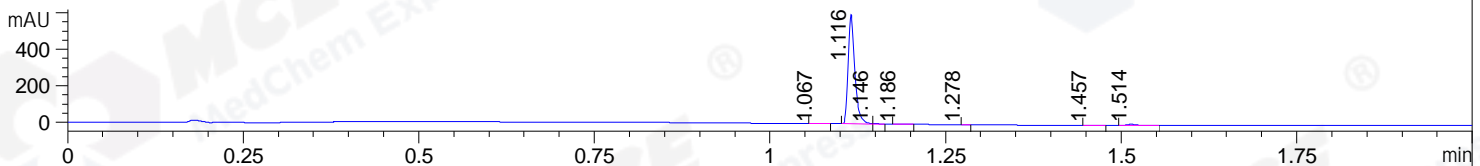
Gradient: 5% to 95%B within 0.6 min

Flow Rate :0.8ml/min

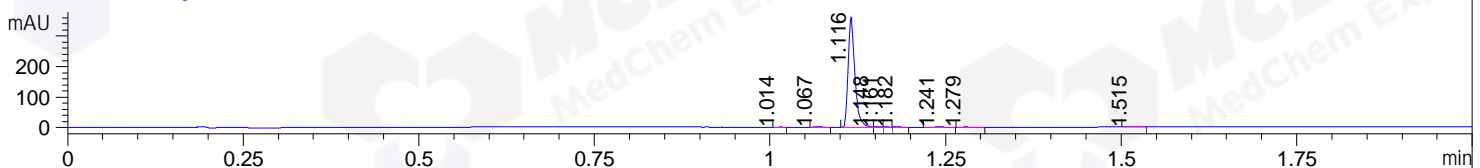
Column :Poroshell 120 EC- C18, 2.1\*50mm,1.9um A-RP-463

Oven Temperature : 45C

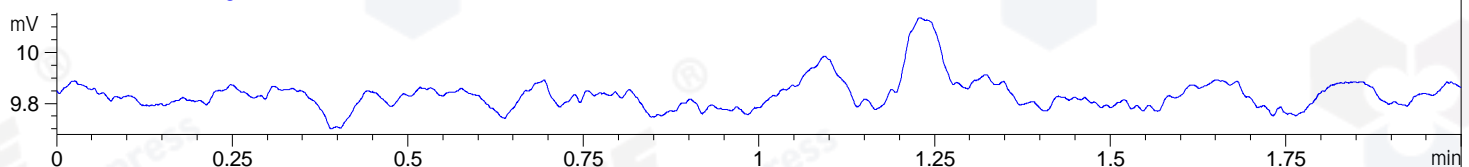
DAD1 A, Sig=214,4 Ref=off



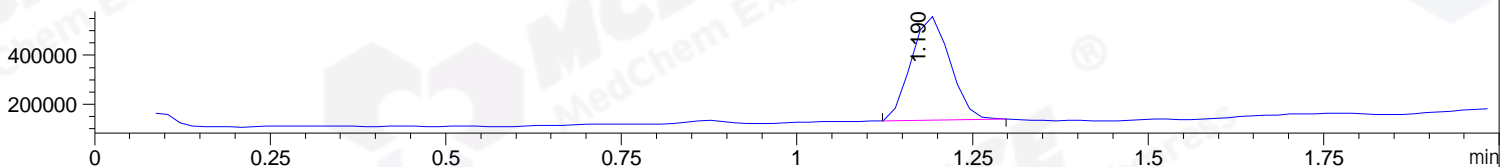
DAD1 B, Sig=254,4 Ref=off



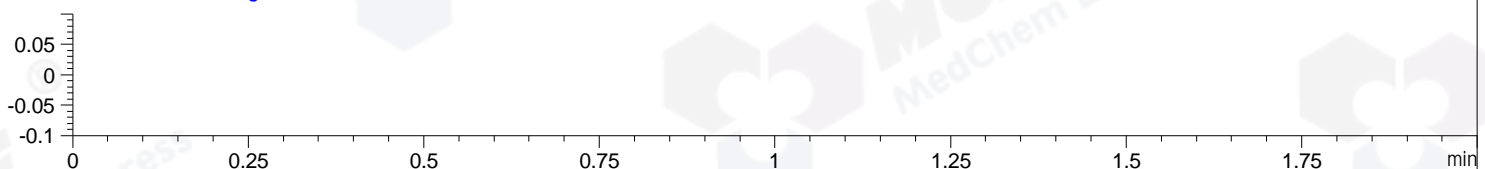
ELS1 A, ELSD Signal



MSD1 TIC, MS File ES-API, Pos, Scan, Frag: 70



Ion 1, MSD1 1, Target Mass 0 +H Positive, EIC=0.7:1.7



Integration Results for DAD1 A, Sig=214,4 Ref=off

RetTim	Width	Area	Height	Area%	MS (+)
1.07	0.01	1.29	2.10	0.32	114
1.12	0.01	396.52	603.61	98.12	114
1.15	0.01	0.66	1.65	0.16	477
1.19	0.01	0.70	0.89	0.17	477
1.28	0.01	0.24	0.46	0.06	114
1.46	0.01	0.28	0.39	0.07	114
1.51	0.01	4.44	5.62	1.10	114

Integration Results for DAD1 B, Sig=254,4 Ref=off

RetTim	Width	Area	Height	Area%	MS (+)
1.01	0.01	0.17	0.28	0.07	114
1.07	0.01	0.71	1.18	0.29	114
1.12	0.01	239.23	362.26	98.77	114
1.15	0.01	0.59	1.19	0.24	477
1.16	0.01	0.21	0.42	0.09	477
1.18	0.01	0.29	0.38	0.12	477
1.24	0.01	0.58	0.81	0.24	477

1.28	0.01	0.31	0.42	0.13	114
1.51	0.01	0.12	0.15	0.05	114

## Integration Results for ELS1 A, ELSD Signal

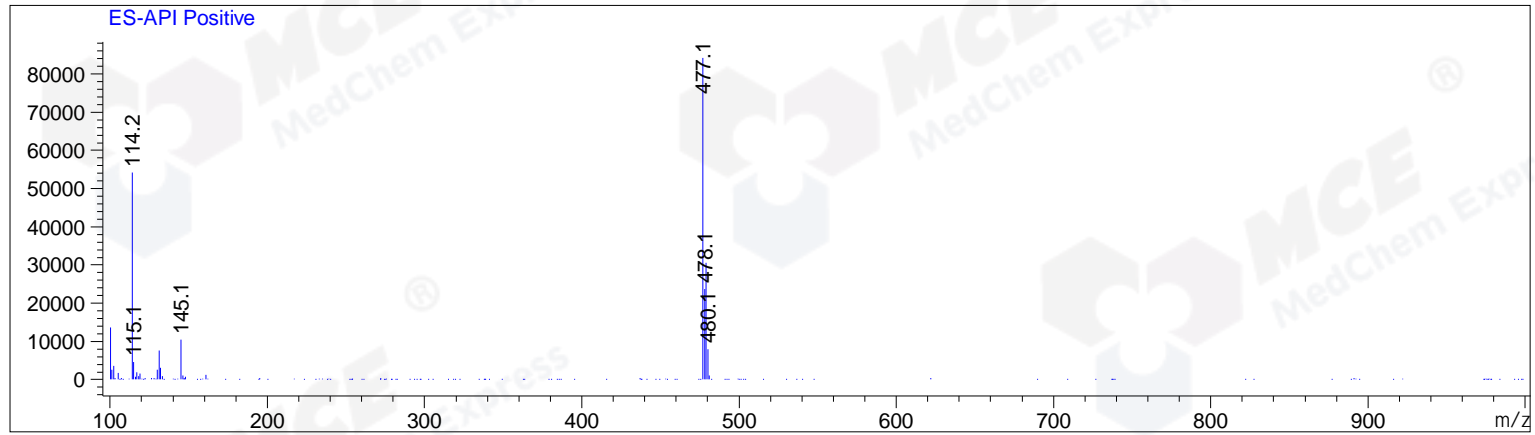
RetTim	Width	Area	Height	Area%	MS (+)
--------	-------	------	--------	-------	--------

## Integration Results for MSD1 TIC, MS File

RetTim	Width	Area	Height	Area%	MS (+)
1.19	0.06	1624565.88	431112.16	100.00	477

Ret. Time: 1.19

<<<< POSITIVE SPECTRA >>>>



\*\*\* End of Report \*\*\*