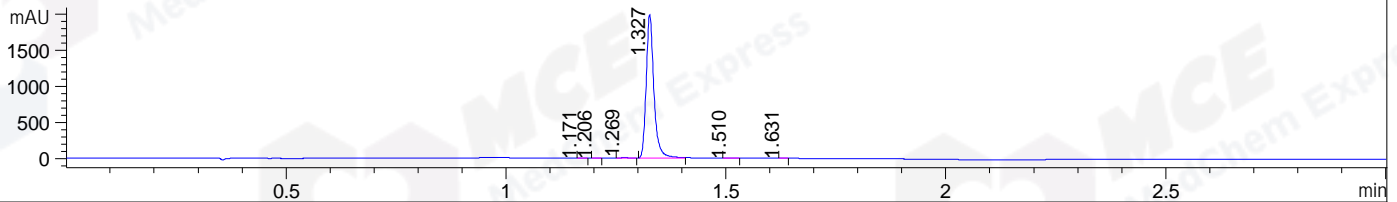
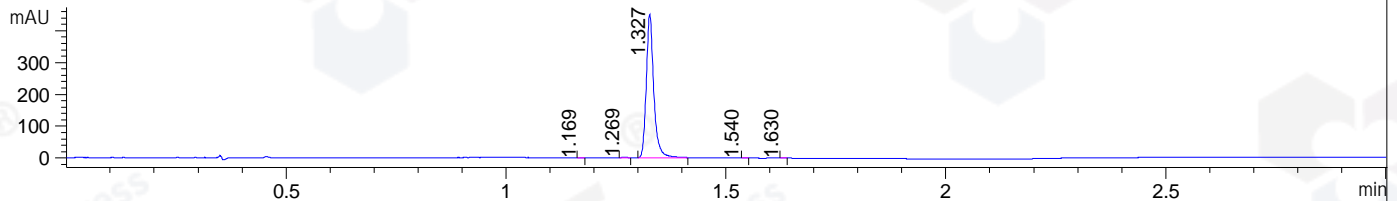


File ..\DATA\2019\20190523\574\BIZ2019-522-CXL34.D Tgt Mass (CHM):
 Injection Date : 23 May 19 10:46 am +0800 Seq. Line : 20
 Sample Name : BIZ2019-522-CXL34 Location : P1-C-01
 Acq. Operator : LQ_1052 Inj : 1
 Spec. Reported : MS Integration Inj Volume : 2 ul
 Acq. Method : D:\Chem32\1\data\2019\20190523\574\1-POS-3MIN.M
 Analysis Method : D:\CHEM32\1\DATA\2019\20190523\574\1-POS-3MIN.M
 Catalog No : HY-101840A Batch#41515
 Method Info : Mobile Phase: A: water(0.01%TFA) B:ACN(0.01%TFA)
 Gradient: 5% to 95%B within 1.3 min
 Flow Rate :1.8ml/min
 Column :SunFire C18, 4.6*50mm,3.5um A-RP-322
 Oven Temperature : 45□

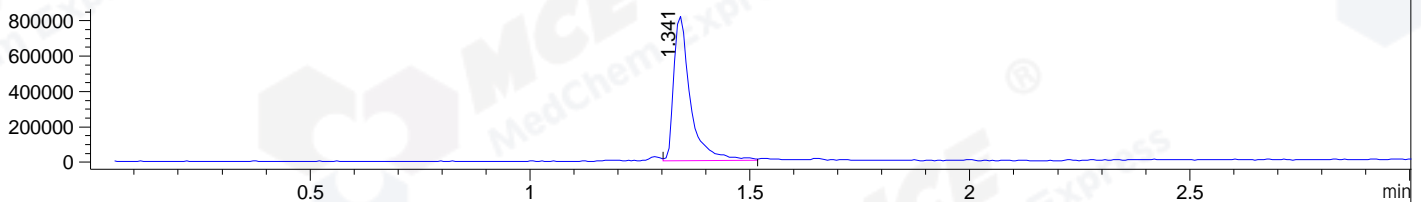
DAD1 B, Sig=214,4 Ref=off



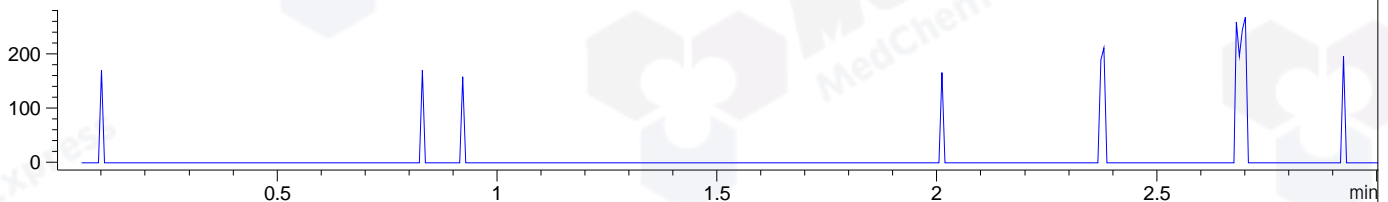
DAD1 C, Sig=254,4 Ref=off



MSD1 TIC, MS File ES-API, Pos, Scan, Frag: 70



Ion 336.1, MSD1 336.1, Target Mass 335.1 +H Positive, EIC=335.8:336.8



Integration Results for DAD1 B, Sig=214,4 Ref=off

RetTim	Width	Area	Height	Area%	MS (+)
1.17	0.01	1.13	1.41	0.05	264
1.21	0.01	0.61	0.77	0.03	264
1.27	0.01	11.11	11.66	0.46	286
1.33	0.02	2413.71	1987.83	99.39	300
1.51	0.02	1.04	0.92	0.04	300
1.63	0.01	0.96	1.45	0.04	300

Integration Results for DAD1 C, Sig=254,4 Ref=off

RetTim	Width	Area	Height	Area%	MS (+)
1.17	0.01	0.41	0.59	0.08	264
1.27	0.01	1.89	2.24	0.36	286
1.33	0.02	530.14	450.82	99.49	300
1.54	0.01	0.13	0.24	0.03	300
1.63	0.01	0.26	0.49	0.05	300

Integration Results for MSD1 TIC, MS File

1.34 0.04 2148852.00 819677.38 100.00 300

RetTim	Width	Area	Height	Area%	MS (+)
--------	-------	------	--------	-------	--------

Ret. Time: 1.34

<<<< POSITIVE SPECTRA >>>>

ES-API Positive

